

DATA MINING

SUPERVISED LEARNING

Regression

Classification - Decision Trees

Classification Issues:

Expressiveness, Generalization, Imbalance

Classification Evaluation

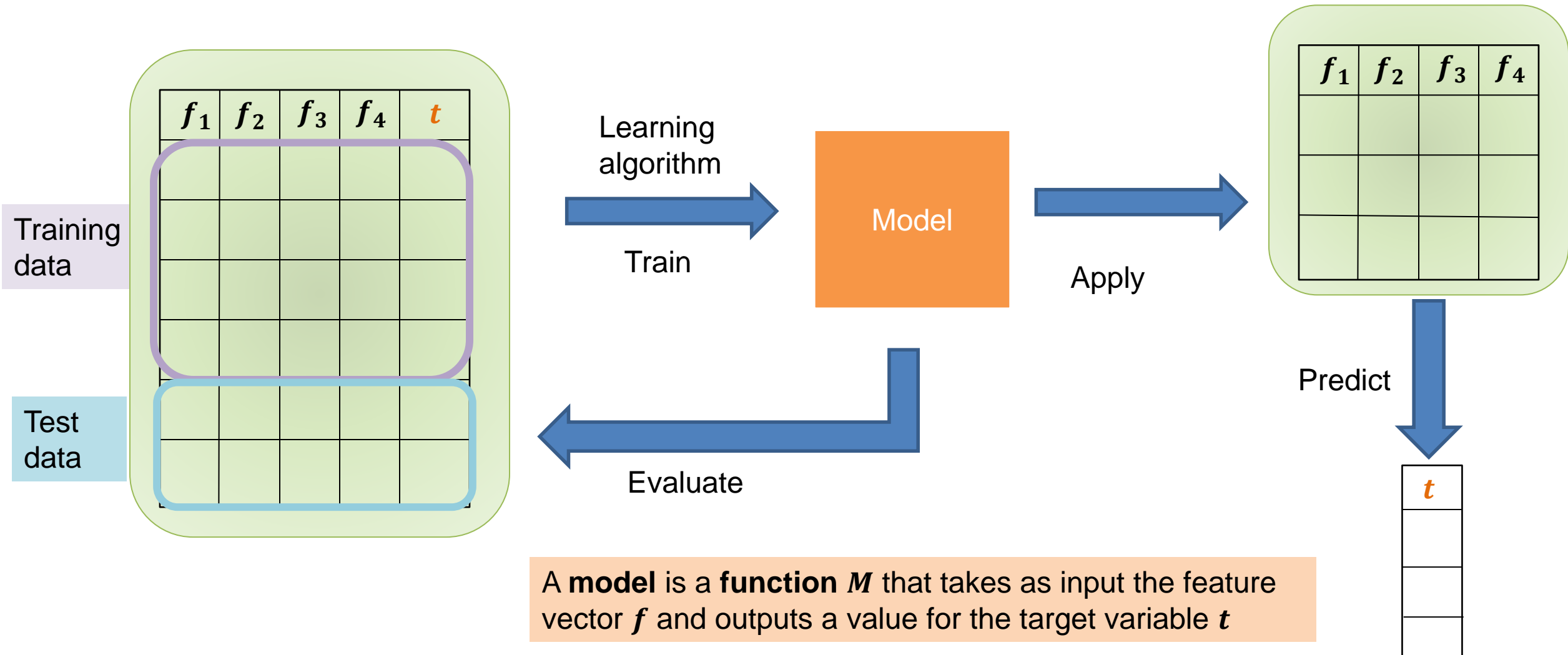
Supervised learning

- In **supervised learning**, except for the feature variables that describe the data, we also have a **target variable**
- The goal is to **learn** a function (model) that can estimate/predict the value of the target variable given the features
 - We learn the function using a labeled **training set**.
- **Regression**: The target variable (but also the features) is **numerical and continuous**
 - The price of a stock, the GDP of a country, the grade in a class, the height of a child, the life expectancy etc
- **Classification**: The target variable is **discrete**
 - Does a taxpayer cheat or not? Will the stock go up or down? Will the student pass or fail? Is a transaction fraudulent or not? What is the topic of an article?

Applications

- **Descriptive modeling:** Explanatory tool to understand the data:
 - **Regression:** How does the change in the value of different factors affect our target variable?
 - What factors contribute to the price of a stock?
 - What factors contribute to the GDP of a country?
 - **Classification:** Understand what attributes distinguish between objects of different classes
 - Why people cheat on their taxes?
 - What words make an post offensive?
- **Predictive modeling:** Predict a class of a previously unseen record
 - **Regression:** What will the life-expectancy of a patient be?
 - **Classification:** Is this a cheater or not? Will the stock go up or not. Is this an offensive post?
- Predictive modeling is in the heart of the data science revolution.

Supervised Learning Overview



LINEAR REGRESSION

Regression

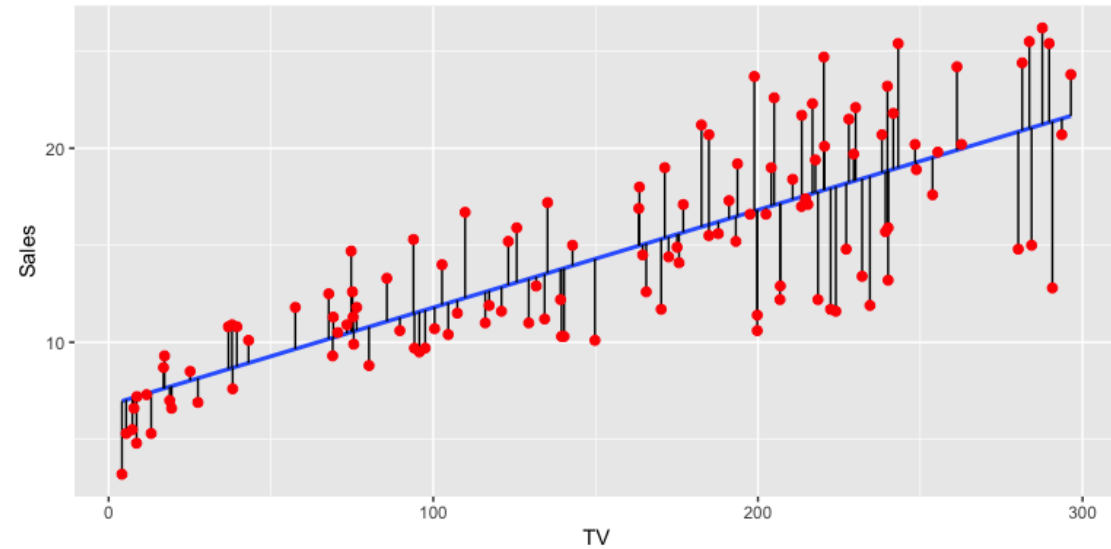
- We assume that we have k **feature variables (numeric)**:
 - Also known as **covariates**, or **independent variables**
- The **target variable** is also known as **dependent variable**.
- We are given a dataset of the form $\{(\mathbf{x}_1, y_1), \dots, (\mathbf{x}_n, y_n)\}$ where, \mathbf{x}_i is a k -dimensional feature vector, and y_i a real value
- We want to learn a function f which given a feature vector \mathbf{x}_i predicts a value $y'_i = f(\mathbf{x}_i)$ that is **as close as possible** to the value y_i
- Minimize sum of squares:

$$\sum_i (y_i - f(\mathbf{x}_i))^2$$

Linear regression

- The simplest form of f is a **linear function**
- In linear regression the function f is typically of the form:

$$f(\mathbf{x}_i) = w_0 + \sum_{j=1}^k w_j x_{ij}$$



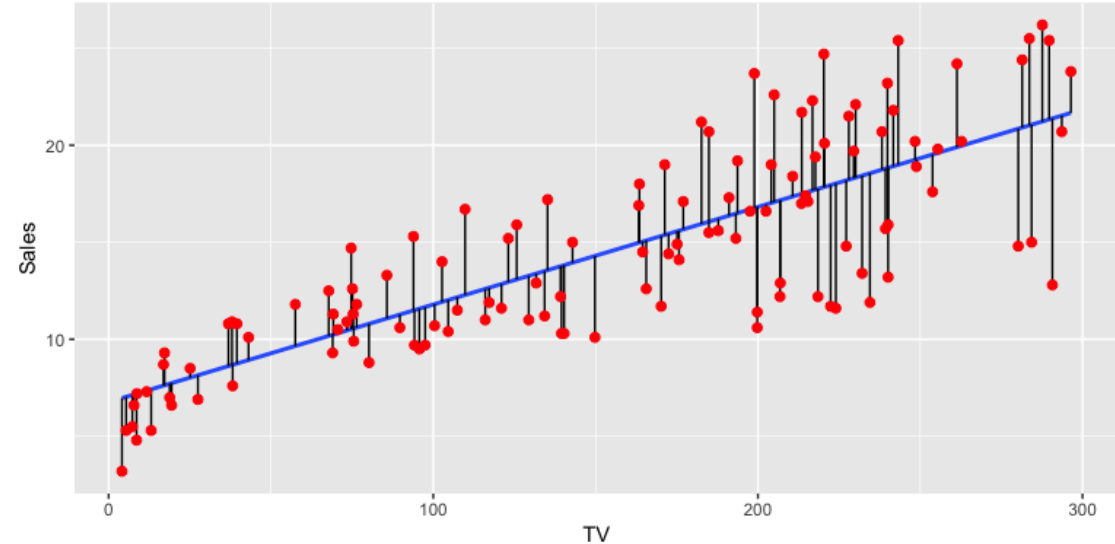
One-dimensional linear regression

In the simplest case we have a single variable and the function is of the form:

$$f(x_i) = w_0 + w_1 x_i$$

Minimizing the error gives:

$$w_0 = \bar{y} - w_1 \bar{x}$$
$$w_1 = \frac{\sum_i (x_i - \bar{x})(y_i - \bar{y})}{\sum_i (x_i - \bar{x})^2} = r_{xy} \frac{\sigma_y}{\sigma_x}$$



\bar{x} : mean value of x_i 's

\bar{y} : mean value of y_i 's

r_{xy} : correlation coefficient
between x, y

Multiple linear regression

- In the general case we have k features, and \mathbf{x}_i, \mathbf{w} are vectors.
- We simplify the notation:

$$\begin{aligned}\mathbf{x}_i &= (1, x_{i1}, \dots, x_{ik}) \\ \mathbf{w} &= (w_0, w_1, \dots, w_k) \\ f(\mathbf{x}_i, \mathbf{w}) &= \mathbf{x}_i^T \mathbf{w}\end{aligned}$$

- Let X be the $n \times (k + 1)$ matrix with vectors \mathbf{x}_i as rows.
- Let $\mathbf{y} = (y_1, \dots, y_n)$
- We can write the SSE function as:

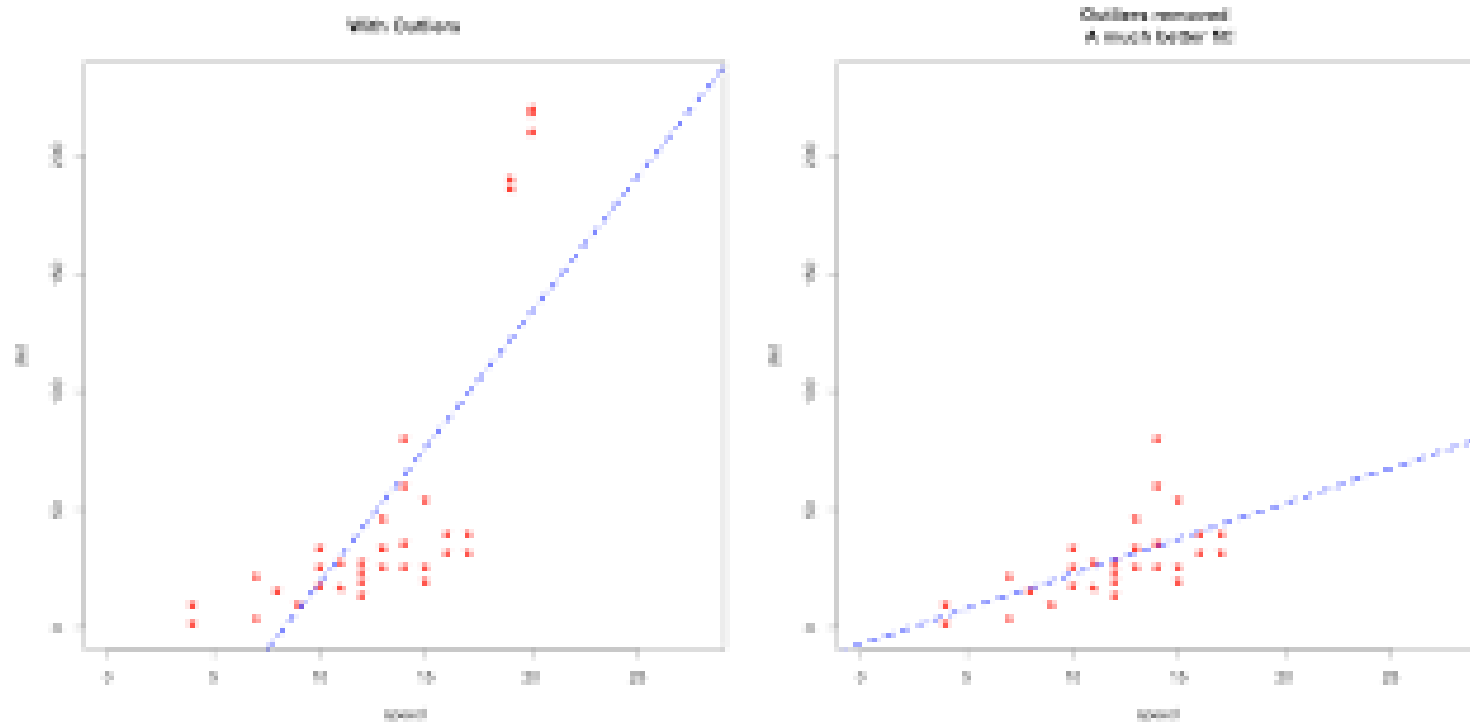
$$SSE = \|\mathbf{X}\mathbf{w} - \mathbf{y}\|^2$$

- There is a closed-form solution for \mathbf{w} :

$$\mathbf{w} = (\mathbf{X}^T \mathbf{X})^{-1} \mathbf{X}^T \mathbf{y}$$

- Matrix inversion may be too expensive. Other optimization techniques are often used to find the optimal vector (e.g., Gradient Descent)

Outliers



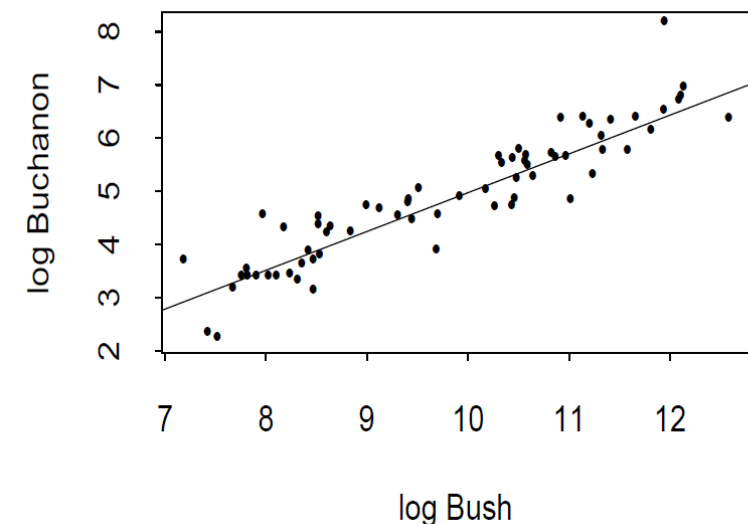
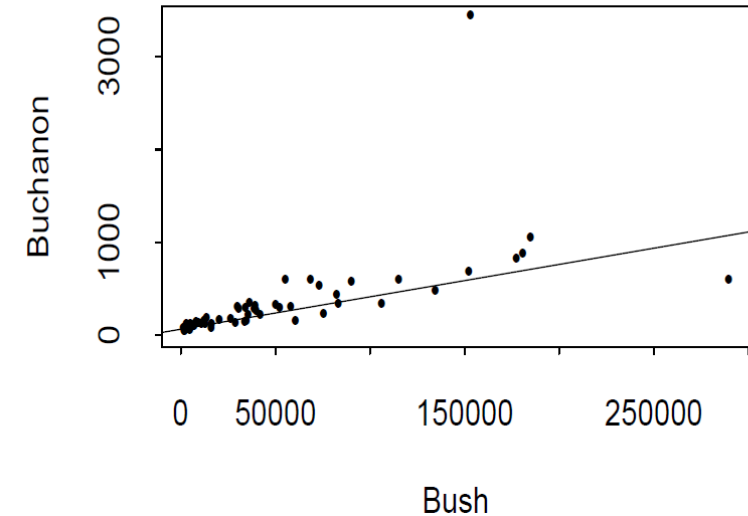
- Regression is sensitive to **outliers**:
 - The line will “tilt” to accommodate very extreme values
- Solution: remove the outliers
 - But make sure that they do not capture useful information

Normalization

- In the regression problem some times our features may have very different **scales**:
 - For example: predict the GDP of a country using as features the percentage of home owners and the income
 - The weights in this case will not be interpretable
- Solution: Normalize the features by replacing the values with the **z-scores**
 - Remove the mean and divide by the standard deviation

More complex models

- The model we have is **linear** with respect to the **parameters** w but the features we consider may be **non-linear functions** of the x_i values.
- To capture more complex relationships, we can take a transformation of the input (e.g., logarithm $\log x_{ij}$), or add polynomial terms (e.g., x_{ij}^2).
 - For example, we can learn a function of the form $f(x) = w_0 + w_1x + w_2x^2$
 - However this may increase a lot the number of features



Interpretation and significance

- A regression model is useful for making **predictions** for new data.
- The coefficients for the linear regression model are also useful for **understanding** the effect of the independent variables to the value of the dependent variable
 - The w_j value is the effect of the increase of x_{ij} by one to the value y_i
- We can also compute the **significance** of the value of w_j by testing the **null hypothesis** that $w_j = 0$

Covariate	Least Squares Estimate	Estimated Standard Error	t value	p-value
(Intercept)	-589.39	167.59	-3.51	0.001 **
Age	1.04	0.45	2.33	0.025 *
Southern State	11.29	13.24	0.85	0.399
Education	1.18	0.68	1.7	0.093
Expenditures	0.96	0.25	3.86	0.000 ***
Labor	0.11	0.15	0.69	0.493
Number of Males	0.30	0.22	1.36	0.181
Population	0.09	0.14	0.65	0.518
Unemployment (14-24)	-0.68	0.48	-1.4	0.165
Unemployment (25-39)	2.15	0.95	2.26	0.030 *
Wealth	-0.08	0.09	-0.91	0.367

This table is typical of the output of a multiple regression program. The “t-value” is the Wald test statistic for testing $H_0 : \beta_j = 0$ versus $H_1 : \beta_j \neq 0$. The asterisks denote “degree of significance” with more asterisks being significant at a smaller level. The example raises several important questions. In particular: (1) should we eliminate some variables from this model? (2) should we interpret this relationships as causal? For example, should we conclude that low crime prevention expenditures cause high crime rates? We will address question (1) in the next section. We will not address question (2) until a later Chapter.

CLASSIFICATION

Classification

- Similar to the regression problem we have features and a target variable that we want to model/predict
- The target variable is now discrete. It is often called the **class label**
 - In the simplest case, it is a binary variable.
- In classification the features may also be categorical.

Example: Catching tax-evasion

<i>Tid</i>	Refund	Marital Status	Taxable Income	Cheat
1	Yes	Single	125K	No
2	No	Married	100K	No
3	No	Single	70K	No
4	Yes	Married	120K	No
5	No	Divorced	95K	Yes
6	No	Married	60K	No
7	Yes	Divorced	220K	No
8	No	Single	85K	Yes
9	No	Married	75K	No
10	No	Single	90K	Yes

Tax-return data for year 2011

A new tax return for 2012

Is this a cheating tax return?

Refund	Marital Status	Taxable Income	Cheat
No	Married	80K	?

An instance of the classification problem: learn a method for discriminating between records of different **classes** (**cheaters** vs **non-cheaters**)

Classification

- **Classification** is the task of **learning a target function f** that maps attribute set x to one of the predefined class labels y
- The function may be defined as an **algorithm** (e.g., if Single and Income < 125K then No)

categorical
categorical
continuous
class

Tid	Refund	Marital Status	Taxable Income	Cheat
1	Yes	Single	125K	No
2	No	Married	100K	No
3	No	Single	70K	No
4	Yes	Married	120K	No
5	No	Divorced	95K	Yes
6	No	Married	60K	No
7	Yes	Divorced	220K	No
8	No	Single	85K	Yes
9	No	Married	75K	No
10	No	Single	90K	Yes

One of the attributes is the **class attribute**
In this case: Cheat

Two **class labels** (or **classes**): **Yes (1)**, **No (0)**

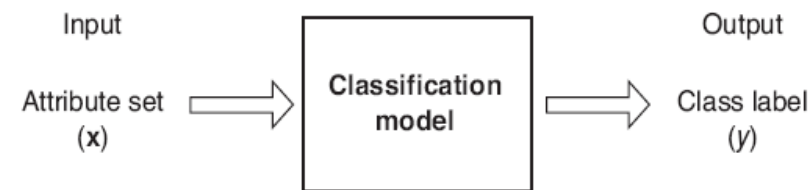


Figure 4.2. Classification as the task of mapping an input attribute set x into its class label y .

Examples of Classification Tasks

- Predicting tumor cells as benign or malignant
- Classifying credit card transactions as legitimate or fraudulent
- Categorizing news stories as finance, weather, entertainment, sports
- Identifying spam email, spam web pages, adult content
- Understanding if a web query has commercial intent or not

Classification is everywhere in data science
Big data has the answers to all questions.

General approach to classification

- Obtain a **training set** consisting of records with **known class labels**
- Training set is used to **build** a classification model
- A **labeled test set** of **previously unseen** data records is used to **evaluate** the quality of the model.
- The classification model is **applied** to new records with **unknown class labels**
- Important intermediate step: **Decide** on what **features** to use

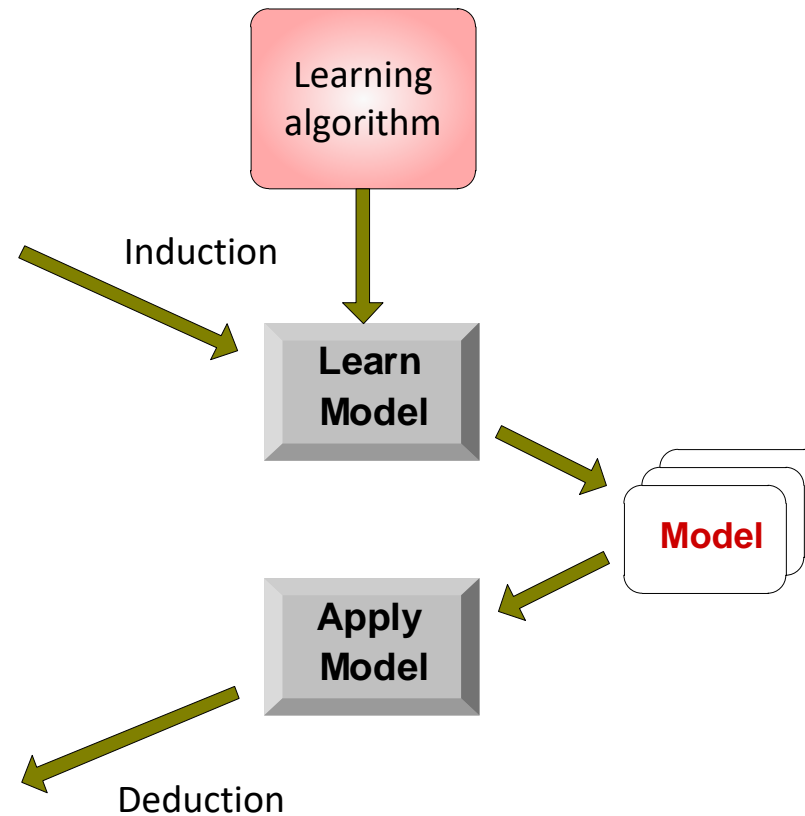
Illustrating Classification Task

Tid	Attrib1	Attrib2	Attrib3	Class
1	Yes	Large	125K	No
2	No	Medium	100K	No
3	No	Small	70K	No
4	Yes	Medium	120K	No
5	No	Large	95K	Yes
6	No	Medium	60K	No
7	Yes	Large	220K	No
8	No	Small	85K	Yes
9	No	Medium	75K	No
10	No	Small	90K	Yes

Training Set

Tid	Attrib1	Attrib2	Attrib3	Class
11	No	Small	55K	?
12	Yes	Medium	80K	?
13	Yes	Large	110K	?
14	No	Small	95K	?
15	No	Large	67K	?

Test Set



Evaluation of classification models

- Counts of **test records** that are correctly (or incorrectly) predicted by the classification model
- **Confusion matrix**

Actual Class	Predicted Class	
	Class = 1	Class = 0
	Class = 1	Class = 0
Class = 1	f_{11}	f_{10}
Class = 0	f_{01}	f_{00}

$$\text{Accuracy} = \frac{\# \text{ correct predictions}}{\text{total \# of predictions}} = \frac{f_{11} + f_{00}}{f_{11} + f_{10} + f_{01} + f_{00}}$$

$$\text{Error rate} = \frac{\# \text{ wrong predictions}}{\text{total \# of predictions}} = \frac{f_{10} + f_{01}}{f_{11} + f_{10} + f_{01} + f_{00}}$$

Classification Techniques

- Decision Tree based Methods
- Rule-based Methods
- Memory based reasoning
- Neural Networks
- Naïve Bayes and Bayesian Belief Networks
- Support Vector Machines
- Logistic Regression

DECISION TREES

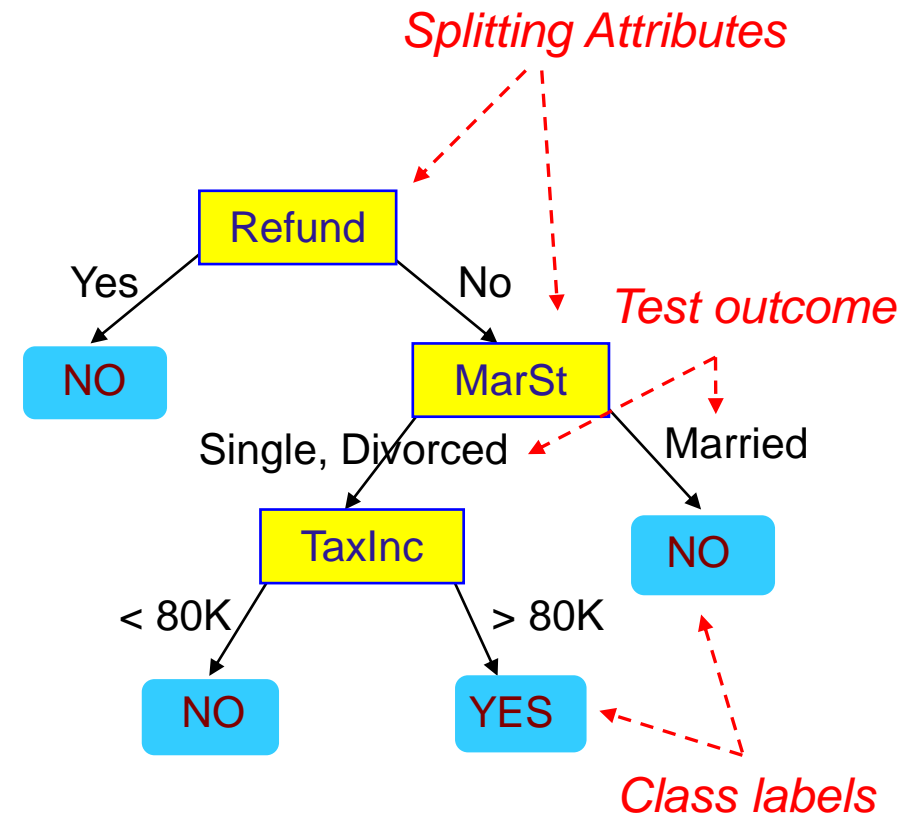
Decision Trees

- Decision tree
 - A flow-chart-like tree structure
 - Internal node denotes a test on an attribute
 - Branch represents an outcome of the test
 - Leaf nodes represent class labels or class distribution

Example of a Decision Tree

<i>Tid</i>	<i>Refund</i>	<i>Marital Status</i>	<i>Taxable Income</i>	<i>Cheat</i>
1	Yes	Single	125K	No
2	No	Married	100K	No
3	No	Single	70K	No
4	Yes	Married	120K	No
5	No	Divorced	95K	Yes
6	No	Married	60K	No
7	Yes	Divorced	220K	No
8	No	Single	85K	Yes
9	No	Married	75K	No
10	No	Single	90K	Yes

Training Data

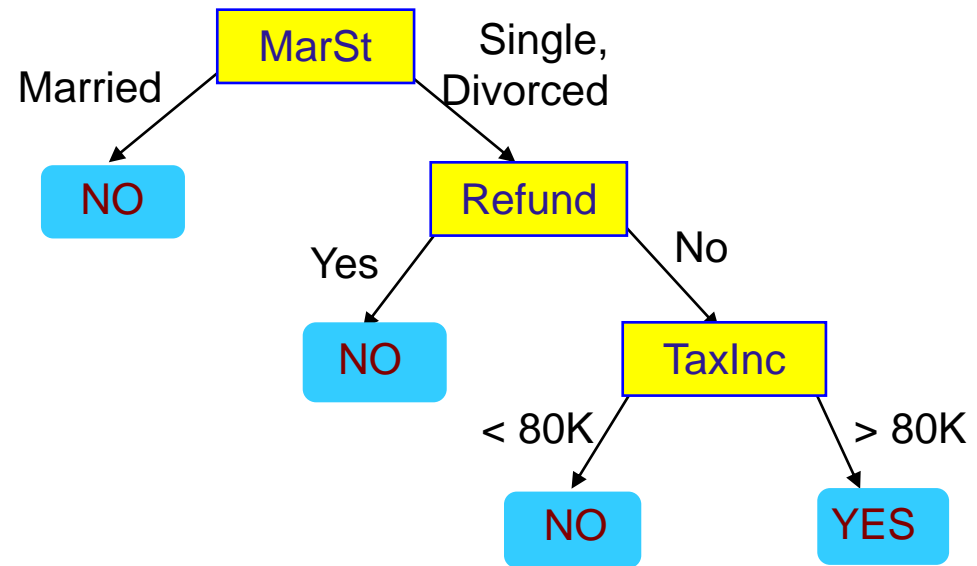


Model: Decision Tree

Another Example of Decision Tree

<i>Tid</i>	Refund	Marital Status	Taxable Income	Cheat
1	Yes	Single	125K	No
2	No	Married	100K	No
3	No	Single	70K	No
4	Yes	Married	120K	No
5	No	Divorced	95K	Yes
6	No	Married	60K	No
7	Yes	Divorced	220K	No
8	No	Single	85K	Yes
9	No	Married	75K	No
10	No	Single	90K	Yes

categorical
categorical
continuous
class



There could be more than one tree that fits the same data!

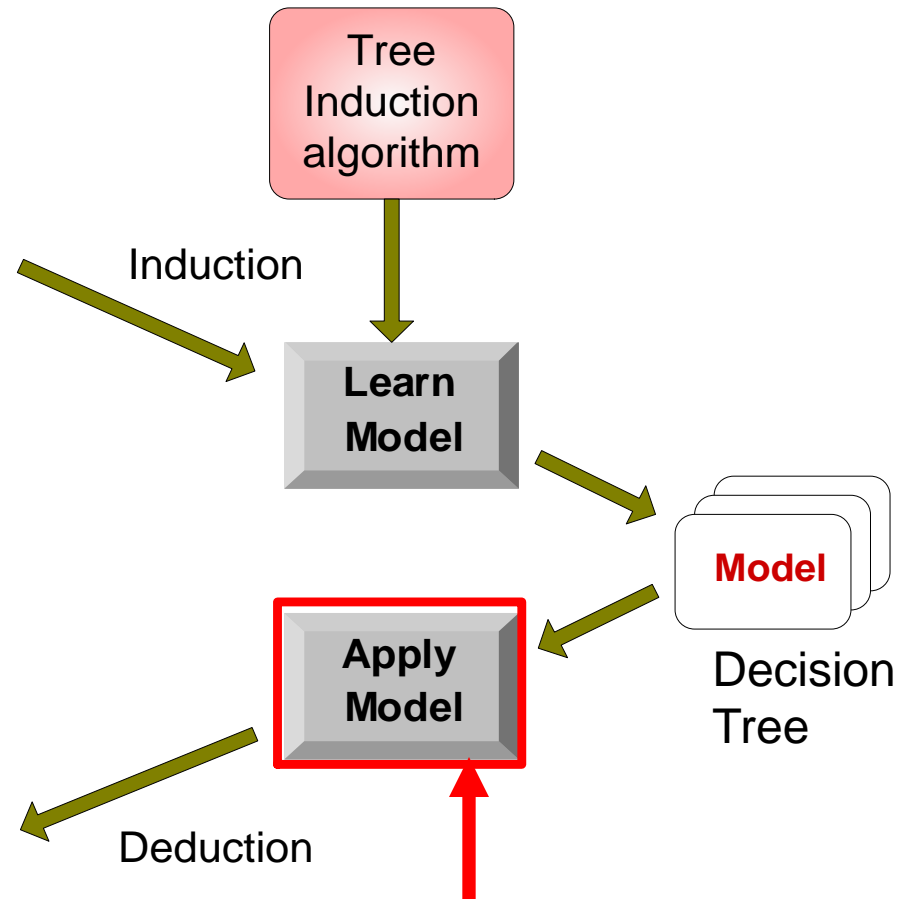
Decision Tree Classification Task

Tid	Attrib1	Attrib2	Attrib3	Class
1	Yes	Large	125K	No
2	No	Medium	100K	No
3	No	Small	70K	No
4	Yes	Medium	120K	No
5	No	Large	95K	Yes
6	No	Medium	60K	No
7	Yes	Large	220K	No
8	No	Small	85K	Yes
9	No	Medium	75K	No
10	No	Small	90K	Yes

Training Set

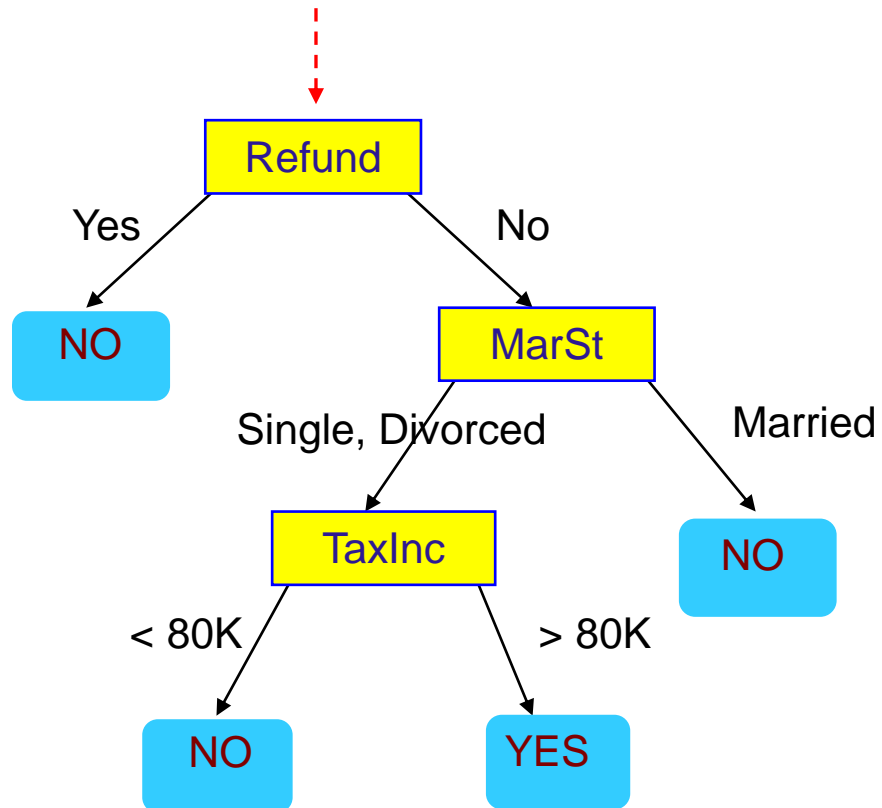
Tid	Attrib1	Attrib2	Attrib3	Class
11	No	Small	55K	?
12	Yes	Medium	80K	?
13	Yes	Large	110K	?
14	No	Small	95K	?
15	No	Large	67K	?

Test Set



Apply Model to Test Data

Start from the root of tree.



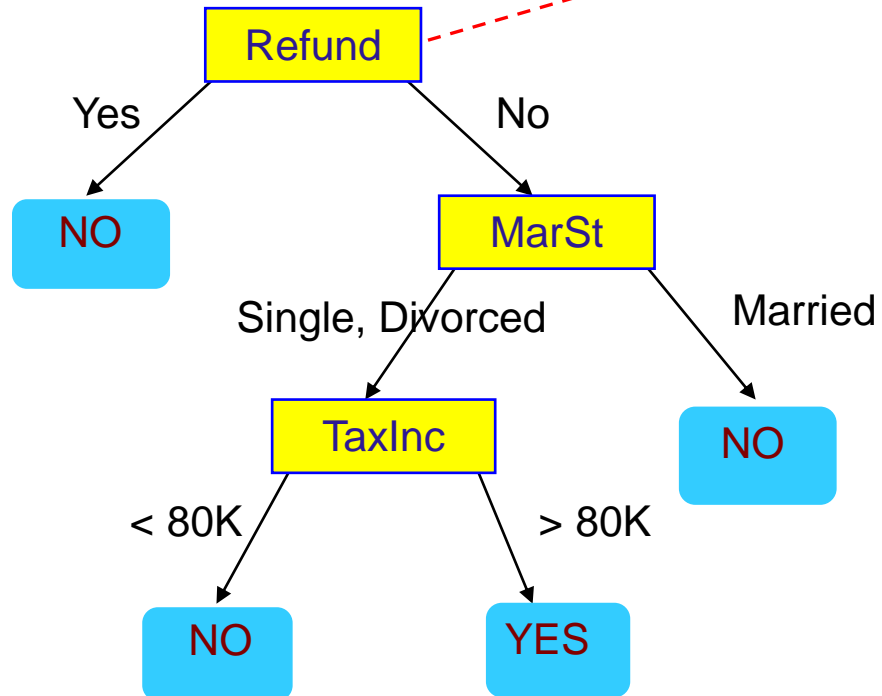
Test Data

Refund	Marital Status	Taxable Income	Cheat
No	Married	80K	?

Apply Model to Test Data

Test Data

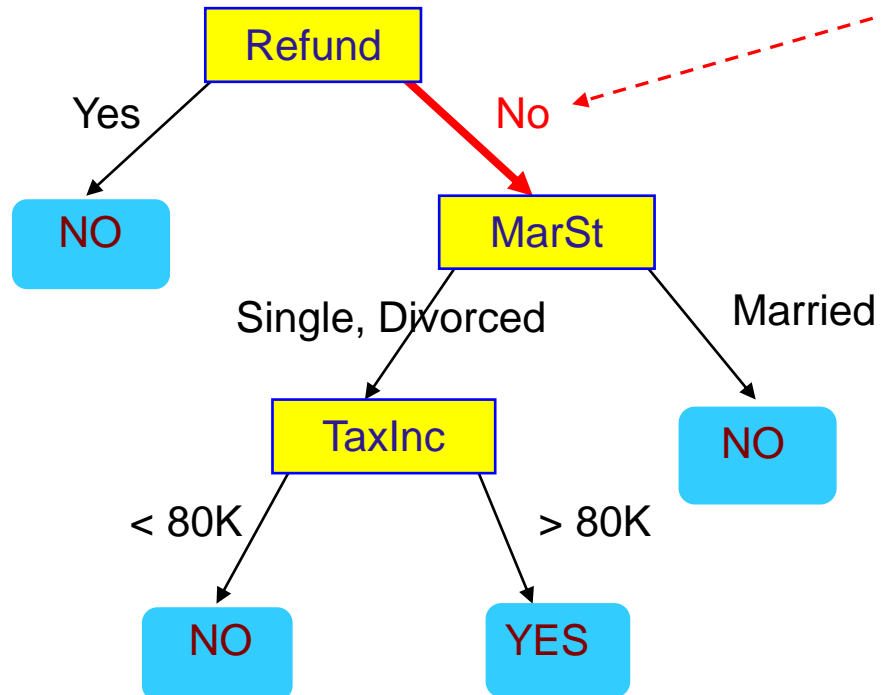
Refund	Marital Status	Taxable Income	Cheat
No	Married	80K	?



Apply Model to Test Data

Test Data

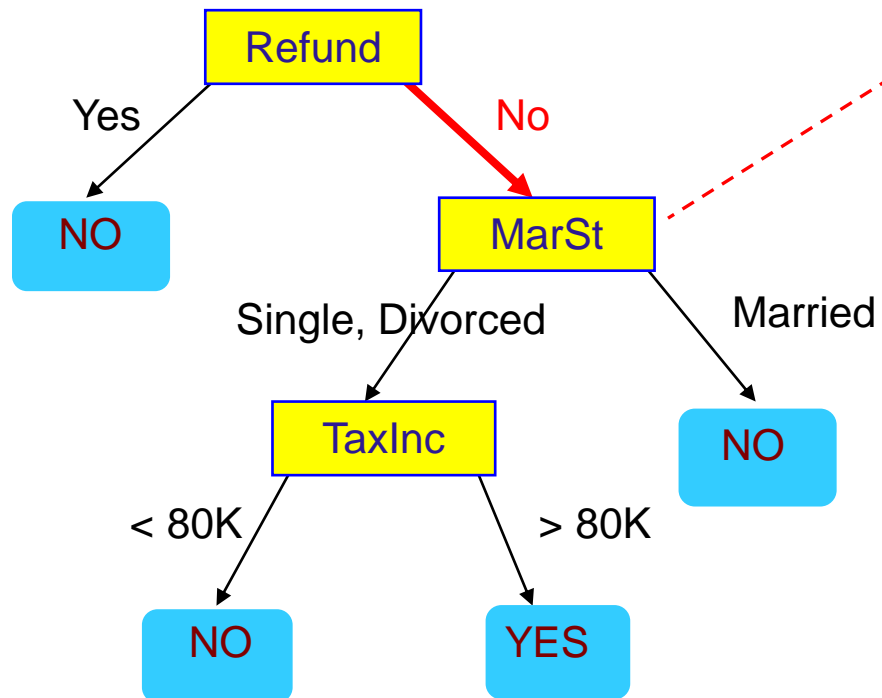
Refund	Marital Status	Taxable Income	Cheat
No	Married	80K	?



Apply Model to Test Data

Test Data

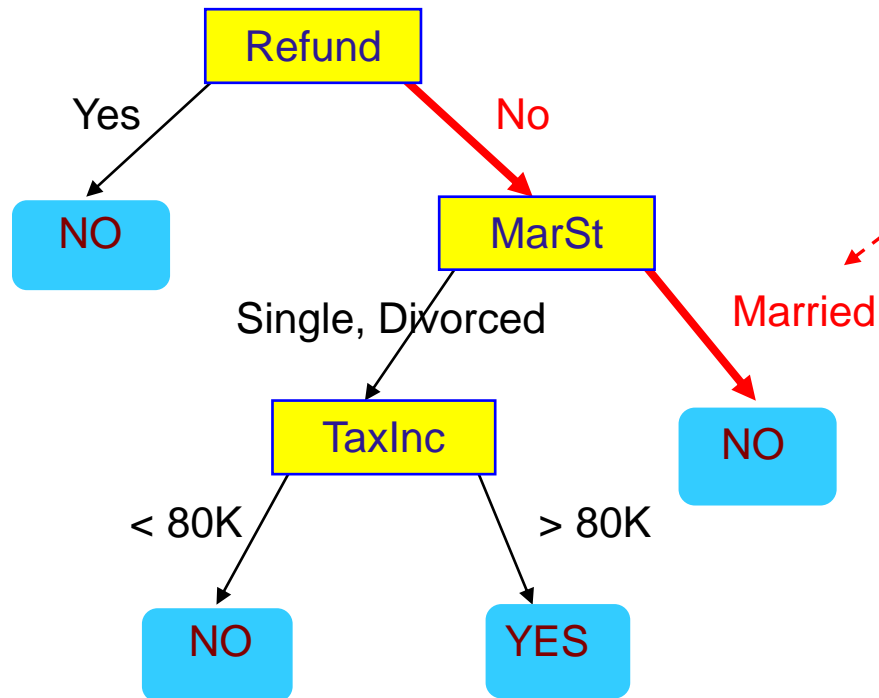
Refund	Marital Status	Taxable Income	Cheat
No	Married	80K	?



Apply Model to Test Data

Test Data

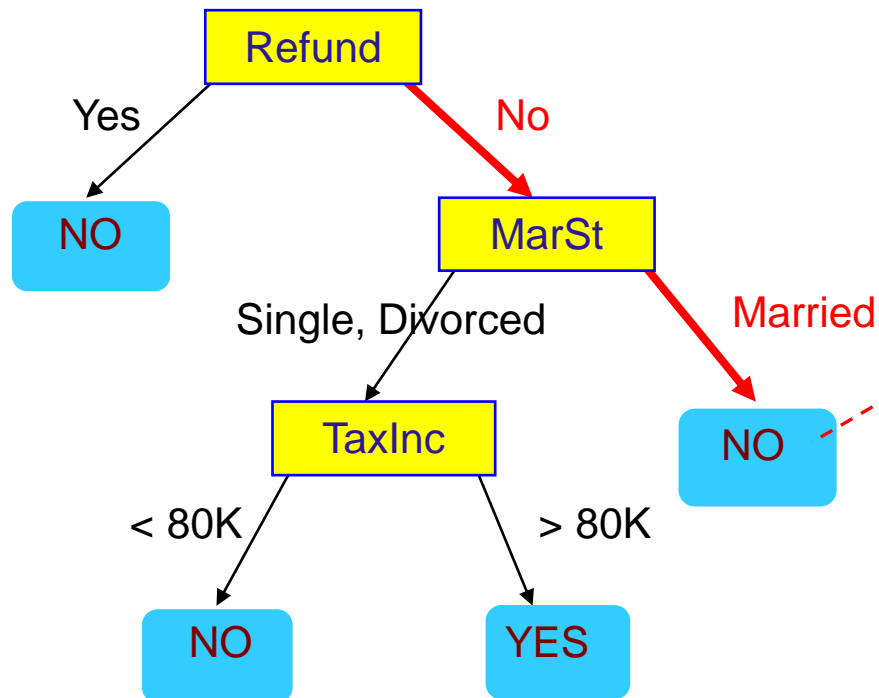
Refund	Marital Status	Taxable Income	Cheat
No	Married	80K	?



Apply Model to Test Data

Test Data

Refund	Marital Status	Taxable Income	Cheat
No	Married	80K	?



Assign Cheat to "No"

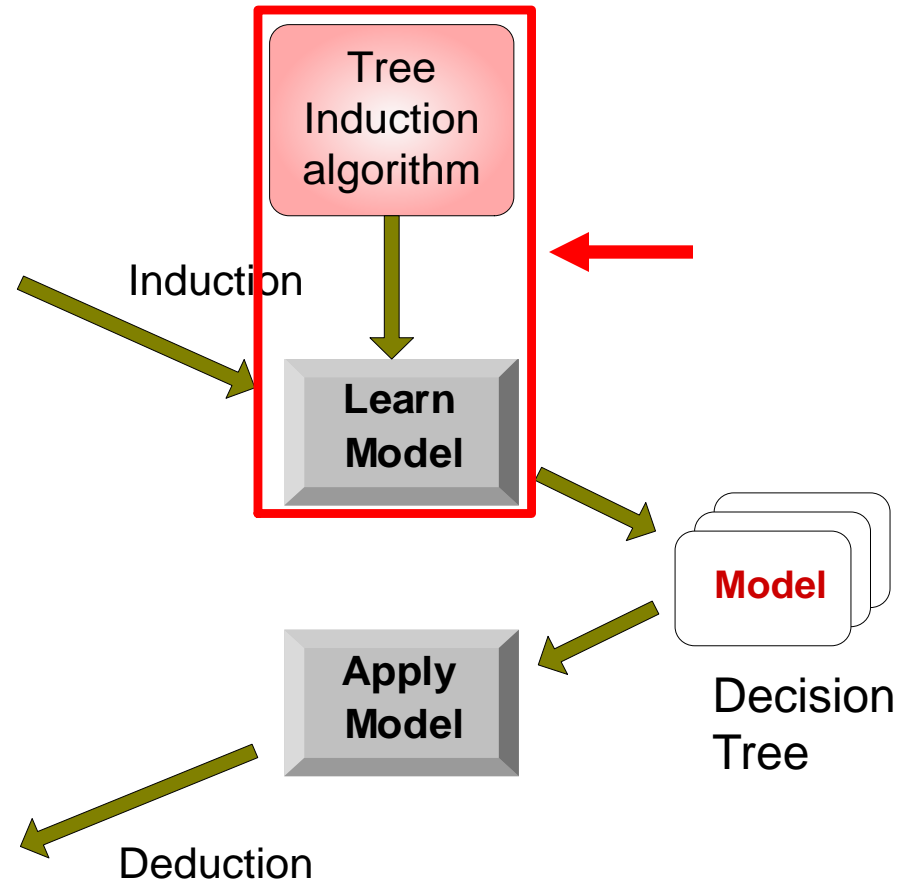
Decision Tree Classification Task

Tid	Attrib1	Attrib2	Attrib3	Class
1	Yes	Large	125K	No
2	No	Medium	100K	No
3	No	Small	70K	No
4	Yes	Medium	120K	No
5	No	Large	95K	Yes
6	No	Medium	60K	No
7	Yes	Large	220K	No
8	No	Small	85K	Yes
9	No	Medium	75K	No
10	No	Small	90K	Yes

Training Set

Tid	Attrib1	Attrib2	Attrib3	Class
11	No	Small	55K	?
12	Yes	Medium	80K	?
13	Yes	Large	110K	?
14	No	Small	95K	?
15	No	Large	67K	?

Test Set



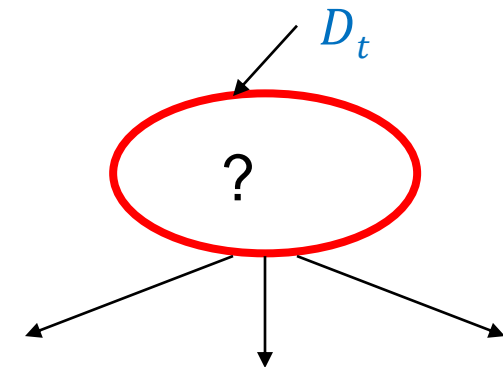
Tree Induction

- **Goal:** Find the tree that has low classification error in the training data (**training error**)
- Finding the **best** decision tree (lowest training error) is **NP-hard**
- **Greedy** strategy.
 - Split the records based on an attribute test that optimizes **certain criterion**.
- Many Algorithms:
 - Hunt's Algorithm (one of the earliest)
 - CART
 - ID3, C4.5
 - SLIQ, SPRINT

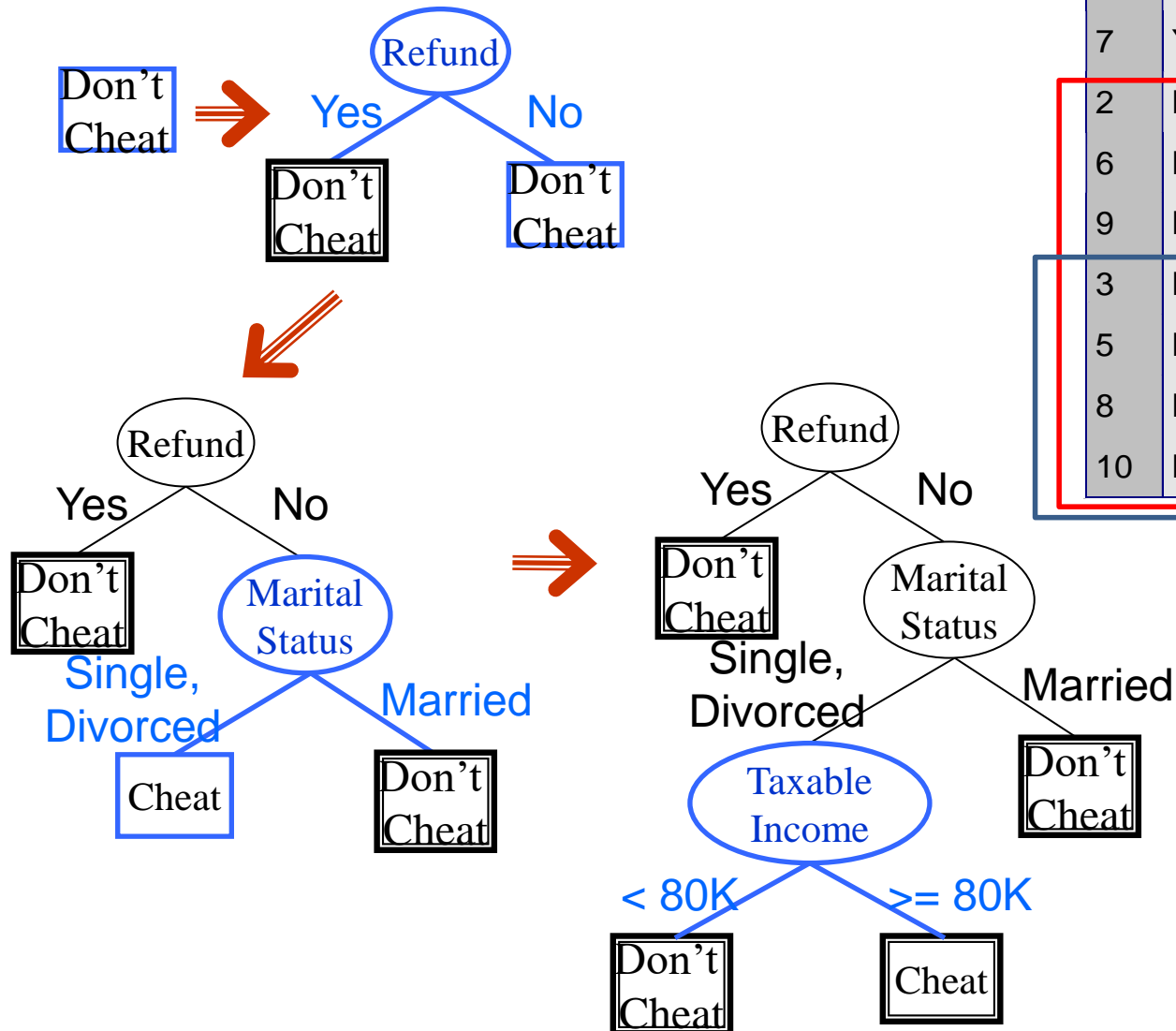
General Structure of Hunt's Algorithm

- D_t : the set of training records that reach a node t
- General Procedure:
 - If D_t contains records that belong the **same class** y_t , then t is a leaf node labeled as y_t
 - If D_t contains records with the **same attribute values**, then t is a leaf node labeled with the **majority class** y_t
 - If D_t is an **empty set**, then t is a leaf node labeled by the **default class**, y_d
 - If D_t contains records that belong to **more than one class**, use an attribute test to **split** the data into smaller subsets.
- Recursively apply the procedure to each subset.

<i>Tid</i>	Refund	Marital Status	Taxable Income	Cheat
1	Yes	Single	125K	No
2	No	Married	100K	No
3	No	Single	70K	No
4	Yes	Married	120K	No
5	No	Divorced	95K	Yes
6	No	Married	60K	No
7	Yes	Divorced	220K	No
8	No	Single	85K	Yes
9	No	Married	75K	No
10	No	Single	90K	Yes



Hunt's Algorithm



Tid	Refund	Marital Status	Taxable Income	Cheat
1	Yes	Single	125K	No
4	Yes	Married	120K	No
7	Yes	Divorced	220K	No
2	No	Married	100K	No
6	No	Married	60K	No
9	No	Married	75K	No
3	No	Single	70K	No
5	No	Divorced	95K	Yes
8	No	Single	85K	Yes
10	No	Single	90K	Yes

Constructing decision-trees (pseudocode)

GenDecTree(Sample **S**, Features **F**)

1. If **stopping_condition**(**S**,**F**) = true then
 - a. leaf = **createNode**()
 - b. leaf.label = **Classify**(**S**)
 - c. return leaf
2. root = **createNode**()
3. root.test_condition = **findBestSplit**(**S**,**F**)
4. **V** = {**v** | **v** a possible outcome of root.test_condition}
5. for each value **v** ∈ **V**:
 - a. **S_v** = {**s** | root.test_condition(**s**) = **v** and **s** ∈ **S**};
 - b. child = **GenDecTree**(**S_v**, **F**) ;
 - c. Add child as a descent of root and label the edge (root→child) as **v**
6. return root

Tree Induction

- Issues

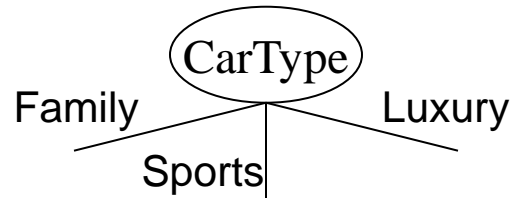
- How to **Classify** a leaf node
 - Assign the **majority class**
 - If leaf is empty, assign the **default class** – the class that has the highest popularity (overall or in the parent node).
- Determine how to split the records
 - **How to specify the attribute test condition?**
 - **How to determine the best split?**
- Determine when to stop splitting

How to Specify Test Condition?

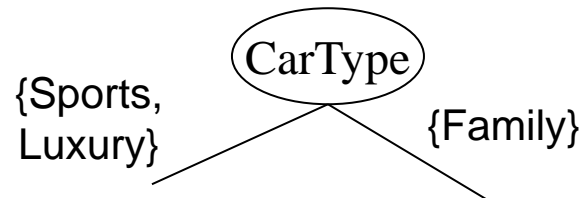
- Depends on attribute types
 - Nominal
 - Ordinal
 - Continuous
- Depends on number of ways to split
 - 2-way split
 - Multi-way split

Splitting Based on Nominal Attributes

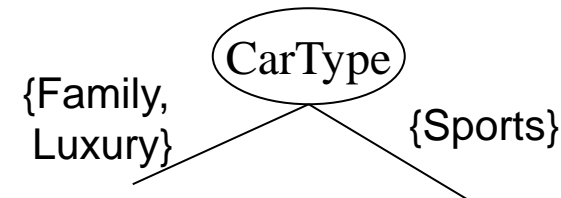
- **Multi-way split:** Use as many partitions as distinct values.



- **Binary split:** Divides values into two subsets.
Need to find optimal partitioning.

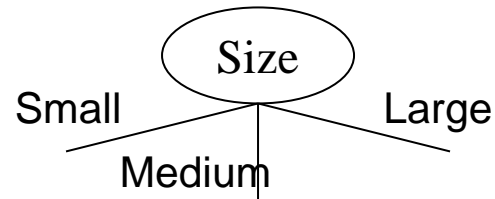


OR

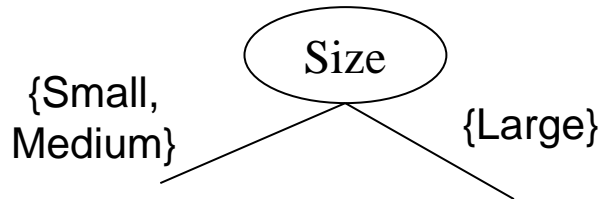


Splitting Based on Ordinal Attributes

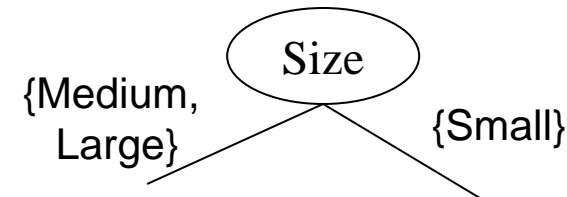
- **Multi-way split:** Use as many partitions as distinct values.



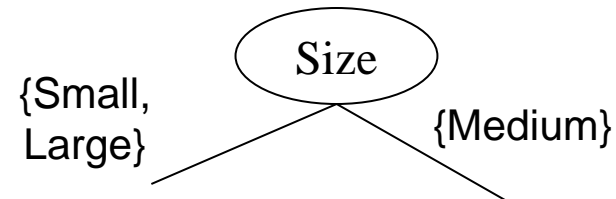
- **Binary split:** Divides values into two subsets – **respects the order**. Need to find optimal partitioning.



OR



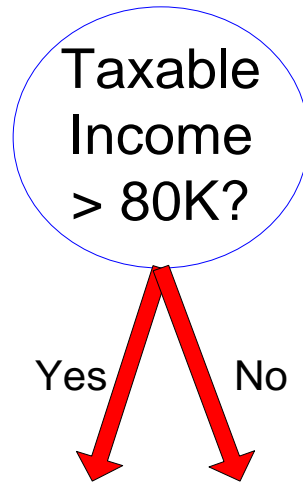
- What about this split?



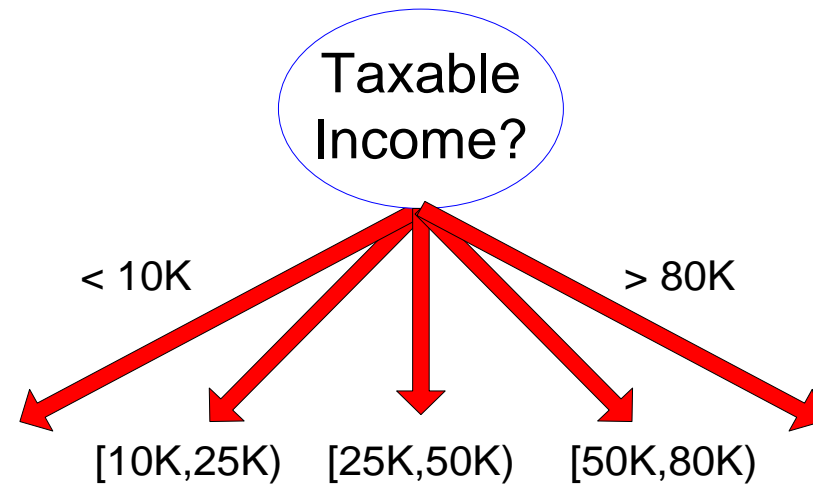
Splitting Based on Continuous Attributes

- Different ways of handling
 - **Discretization** to form an **ordinal** categorical attribute
 - **Static** – discretize once at the beginning
 - **Dynamic** – ranges can be found by equal interval bucketing, equal frequency bucketing (percentiles), or clustering.
 - **Binary Decision**: $(A < v)$ or $(A \geq v)$
 - consider all possible splits and finds the best cut
 - can be more computationally intensive

Splitting Based on Continuous Attributes



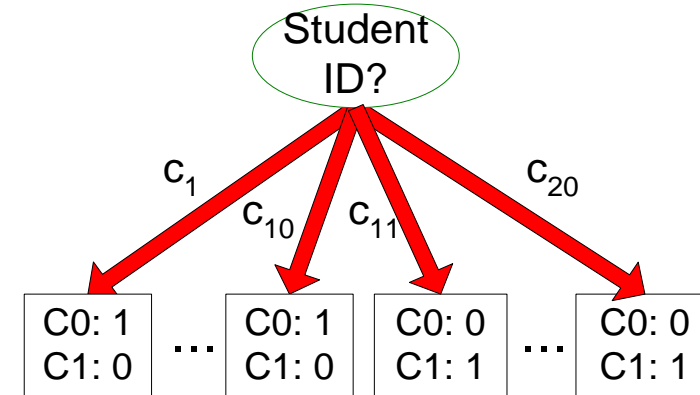
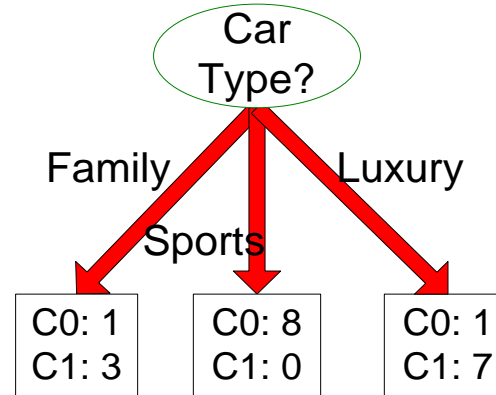
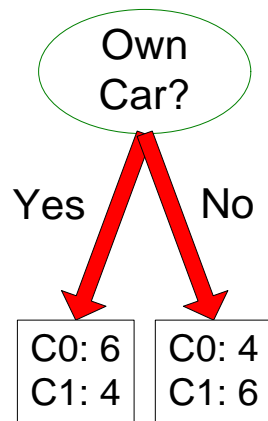
(i) Binary split



(ii) Multi-way split

How to determine the Best Split

Before Splitting: 10 records of class 0,
10 records of class 1



Which test condition is the best?

How to determine the Best Split

- **Greedy** approach:
 - Creation of nodes with **homogeneous** class distribution is preferred
- Need a measure of node **impurity**:

C0: 5
C1: 5

Non-homogeneous,
High degree of impurity

C0: 9
C1: 1

Homogeneous,
Low degree of impurity

- Ideas?

Measuring Node Impurity

- We are at a node D_t and the samples belong to classes $\{1, \dots, c\}$
 - $p(i|t)$: fraction of records associated with node D_t belonging to class i
- **Impurity measures:**

$$\textit{Entropy}(D_t) = - \sum_{i=1}^c p(i|t) \log p(i|t)$$

- Used in ID3 and C4.5

$$\textit{Gini}(D_t) = 1 - \sum_{i=1}^c p(i|t)^2$$

$$\textit{Classification Error}(D_t) = 1 - \max p(i|t)$$

- Used in CART, SLIQ, SPRINT.

Example: C4.5

- Simple depth-first construction.
- Uses Information Gain
- Sorts Continuous Attributes at each node.
- Needs entire data to fit in memory.
- Unsuitable for Large Datasets.
 - Needs out-of-core sorting.
- You can download the software from:
<http://www.cse.unsw.edu.au/~quinlan/c4.5r8.tar.gz>

OTHER CLASSIFICATION ISSUES

Expressiveness

Overfitting

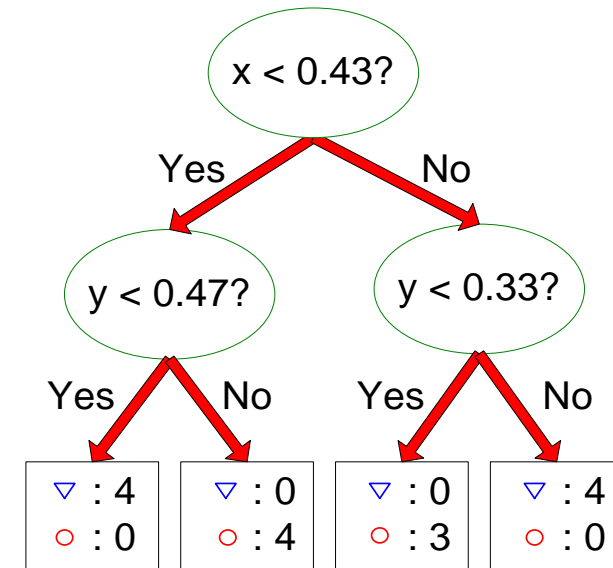
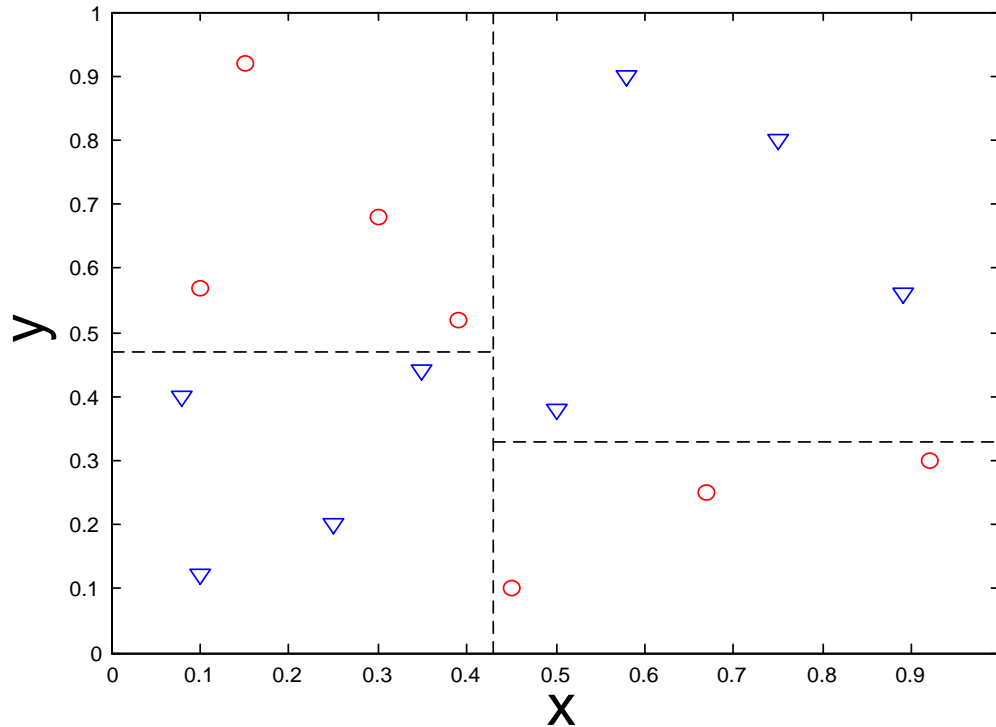
Evaluation

EXPRESSIVENESS

Expressiveness

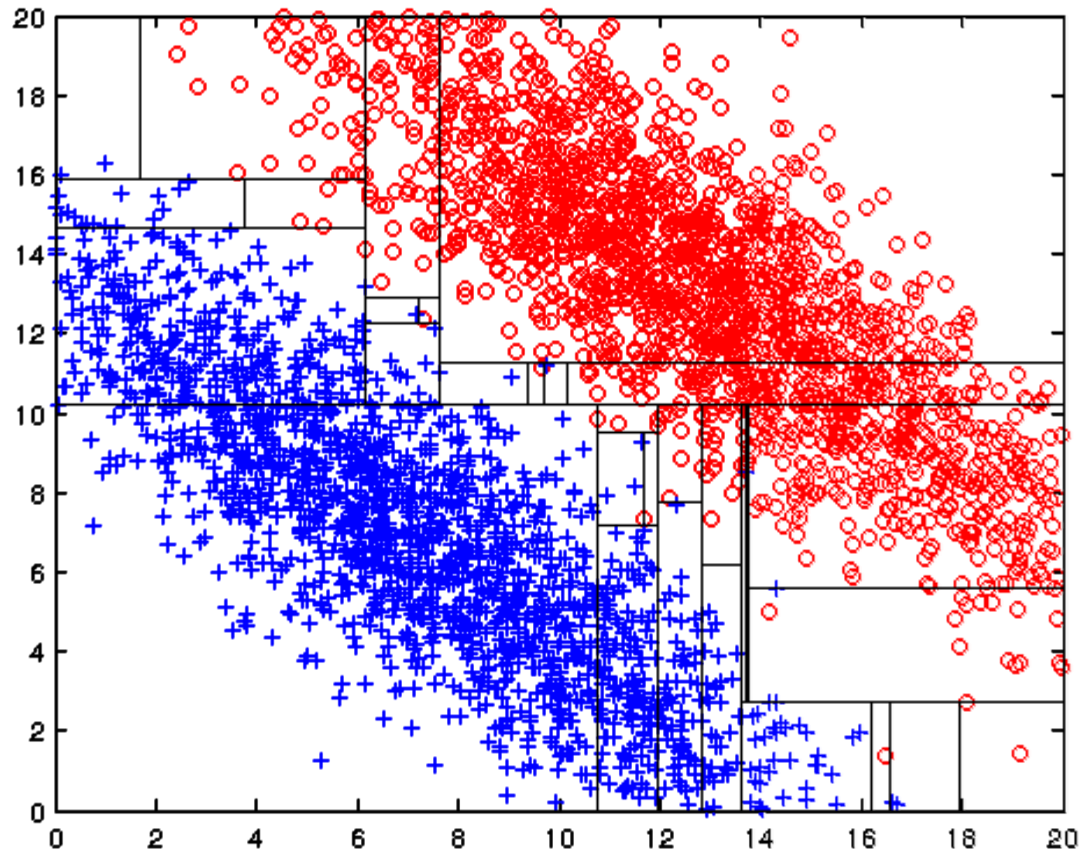
- A classifier defines a **function** that discriminates between two (or more) classes.
- The **expressiveness** of a classifier is the **class of functions** that it can model, and the kind of data that it can **separate**
- When we have **discrete** (or binary) values, we are interested in the class of **boolean functions** that can be modeled
- When the data-points are real vectors we talk about the **decision boundary** that the classifier can model
 - The decision boundary is the (multi-dimensional) surface defined by the function of the classifier that separates the YES and NO decisions

Decision Boundary for Decision Trees



- Consider a decision tree on real data where the test conditions involve **a single attribute** at a time, and a **Yes/No question**
- Each test defines a line **parallel to an axis** (the one corresponding to the test attribute)
- The decision boundary is a collection of lines parallel to the axes

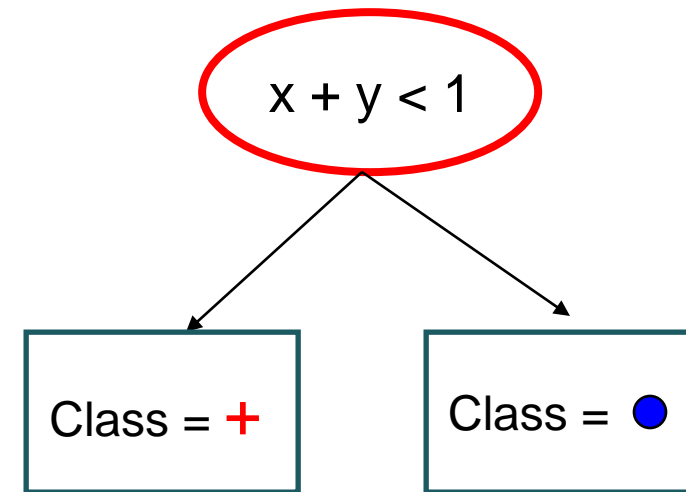
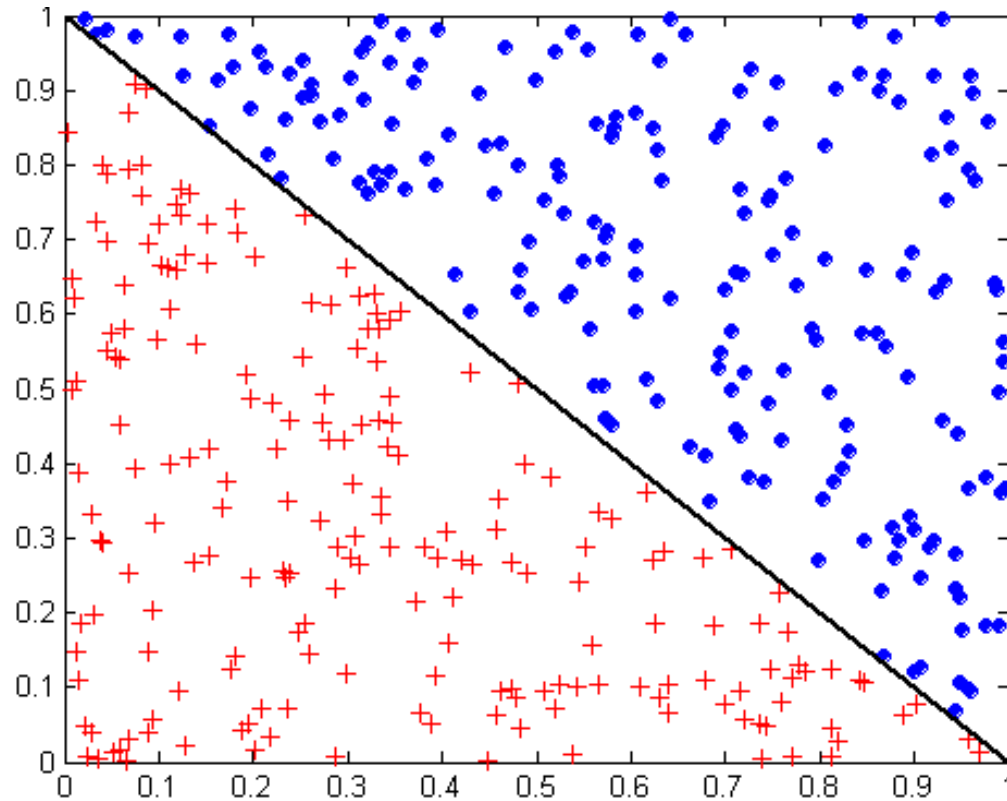
Limitations of single attribute-based decision boundaries



Both **positive (+)** and **negative (o)** classes generated from skewed Gaussians with centers at (8,8) and (12,12) respectively.

The resulting boundary is very complex.

Oblique Decision Trees



- Test condition may involve multiple attributes
- More expressive representation
- Finding optimal test condition is computationally expensive

Expressiveness

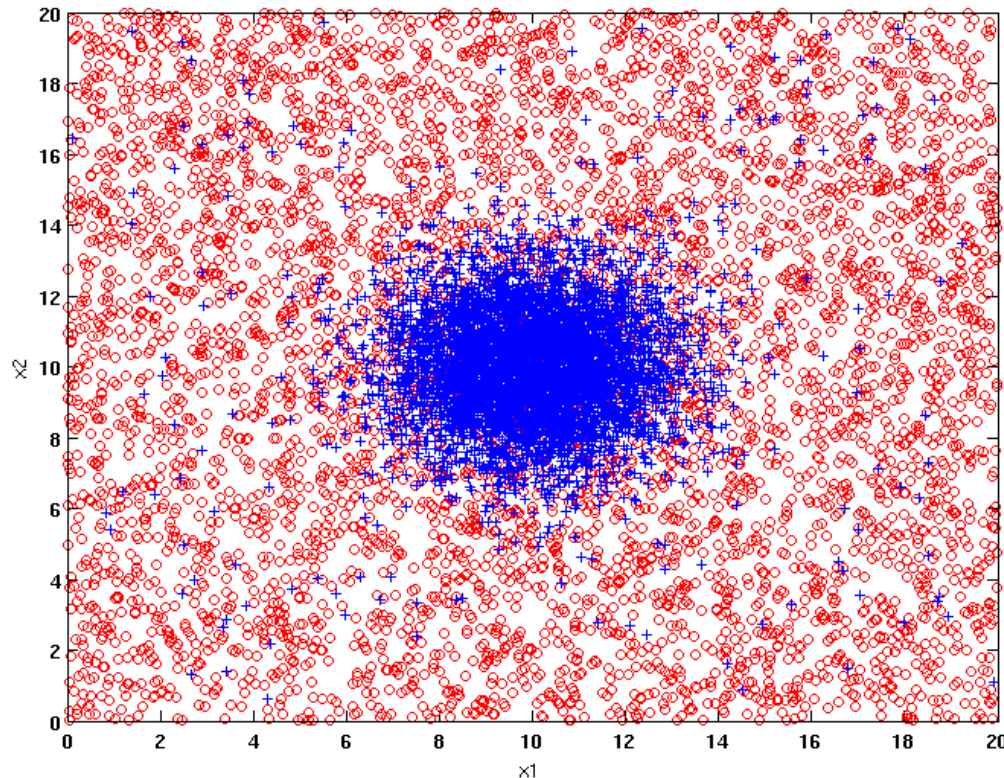
- Decision tree provides **expressive** representation for learning discrete-valued function
 - But they do not generalize well to certain types of Boolean functions
 - Example: **parity function**:
 - Class = 1 if there is an **even** number of Boolean attributes with truth value = True
 - Class = 0 if there is an **odd** number of Boolean attributes with truth value = True
 - For accurate modeling, must have a complete tree
- Less expressive for modeling continuous variables
 - Particularly when test condition involves only a single attribute at-a-time

GENERALIZATION

Generalization

- **Generalization** refers to the ability of the classifier to correctly classify data that it has not already seen.
 - The assumption is that the new data come from the same distribution/model as the training data
- How do we measure how well a model generalizes?
- Classification errors:
 - **Training errors** (apparent errors): Errors committed on the training set
 - This is what we can control when creating the classifier. We hope that the training error is indicative of the generalization error, but as we will see this is not always the case
 - **Test errors**: Errors committed on the test set
 - This is a true measure of generalization, and this is what we want to be small, but we do not have access to the test error at training time.

Example Data Set



Two class problem:

+ : 5400 instances

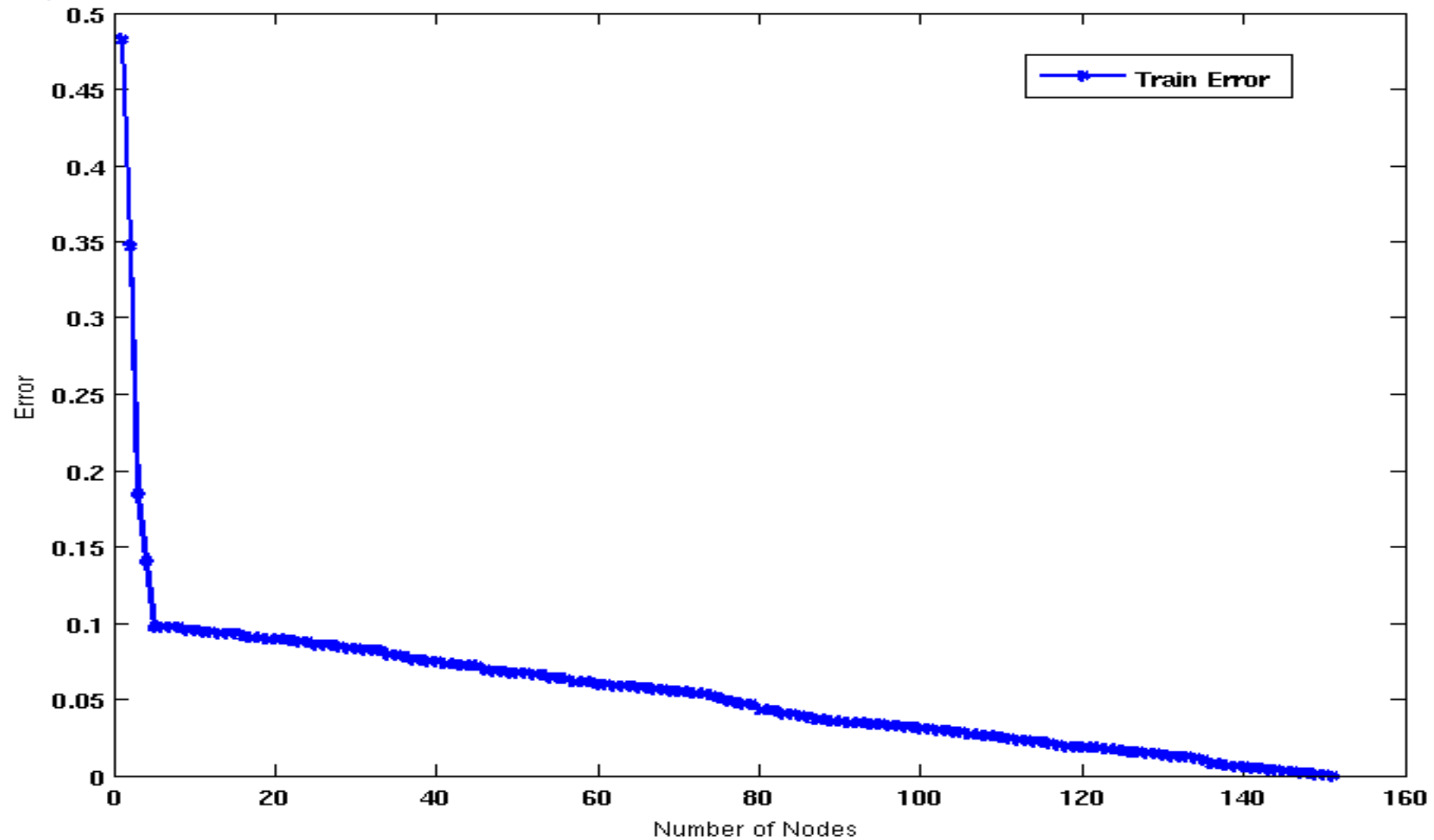
- 5000 instances generated from a Gaussian centered at (10,10)
- 400 noisy instances added

o : 5400 instances

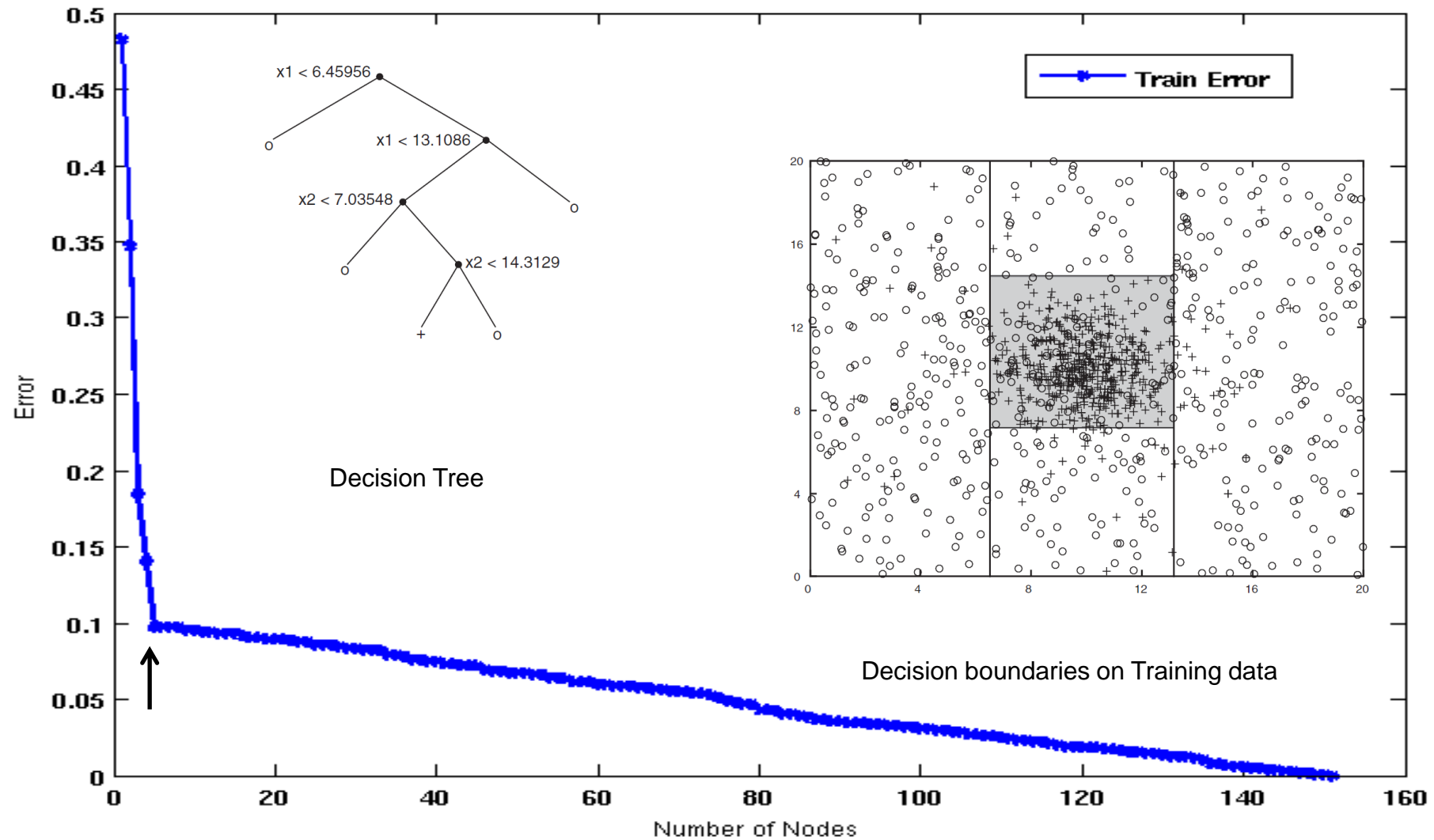
- Generated from a uniform distribution

10 % of the data used for training and 90% of the data used for testing

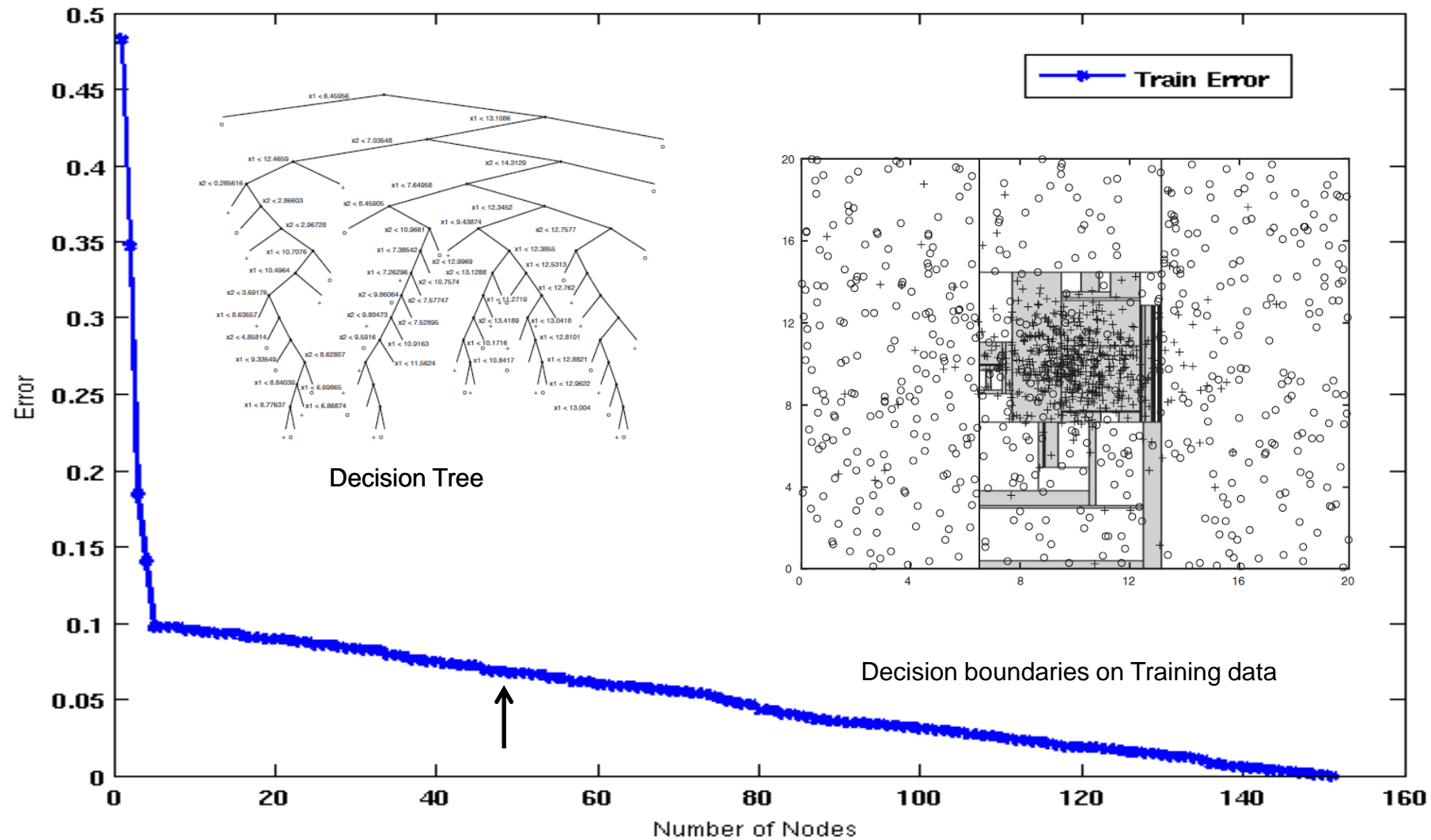
Increasing number of nodes in Decision Trees



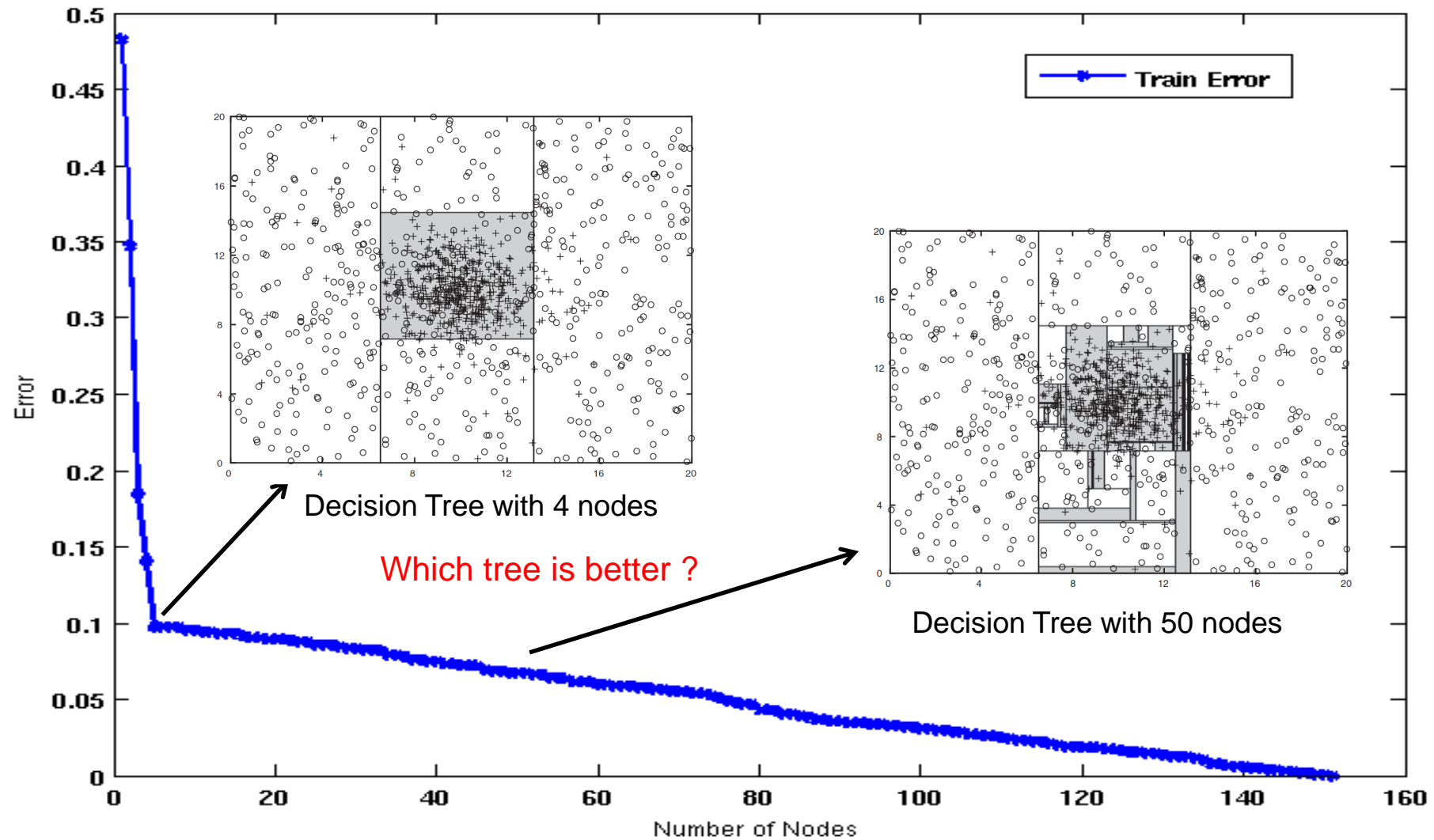
Decision Tree with 4 nodes



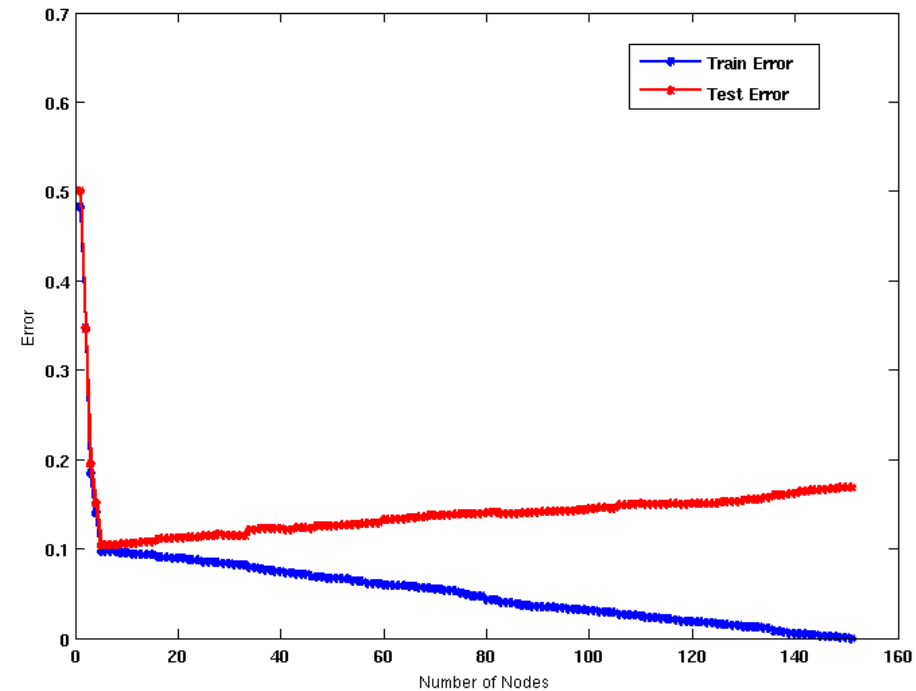
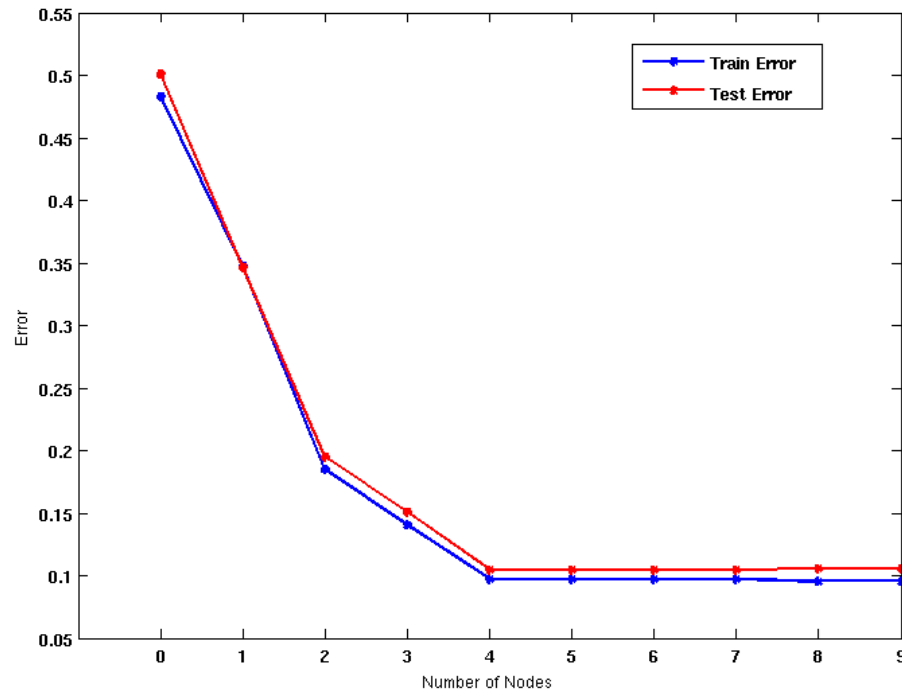
Decision Tree with 50 nodes



Which tree is better?



Generalization



When model is too simple, both training and test errors are large: **Underfitting**

When model is too complex, training error is small but test error is large: **Overfitting**

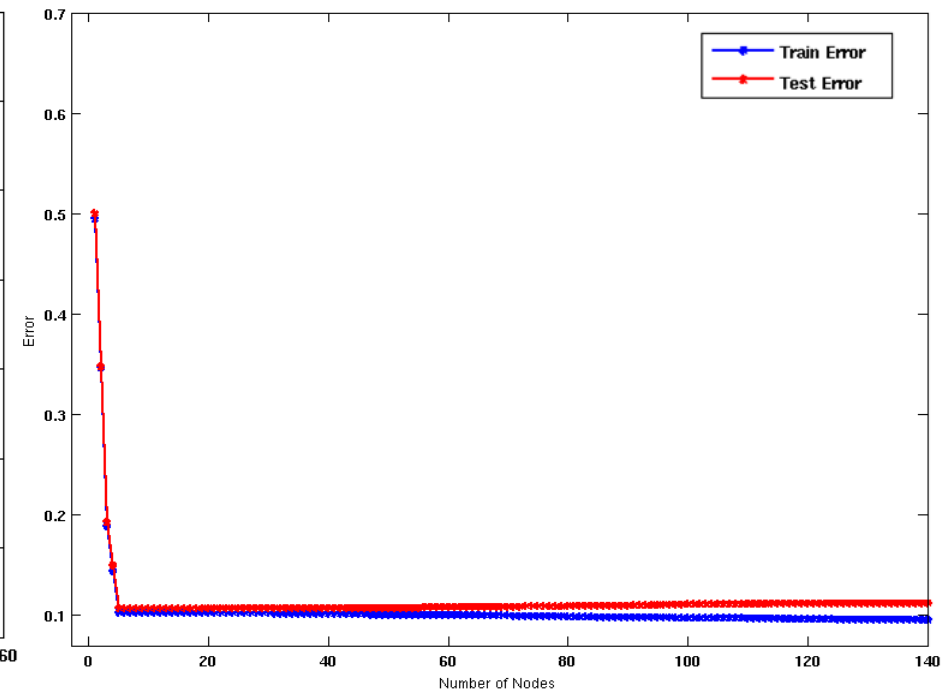
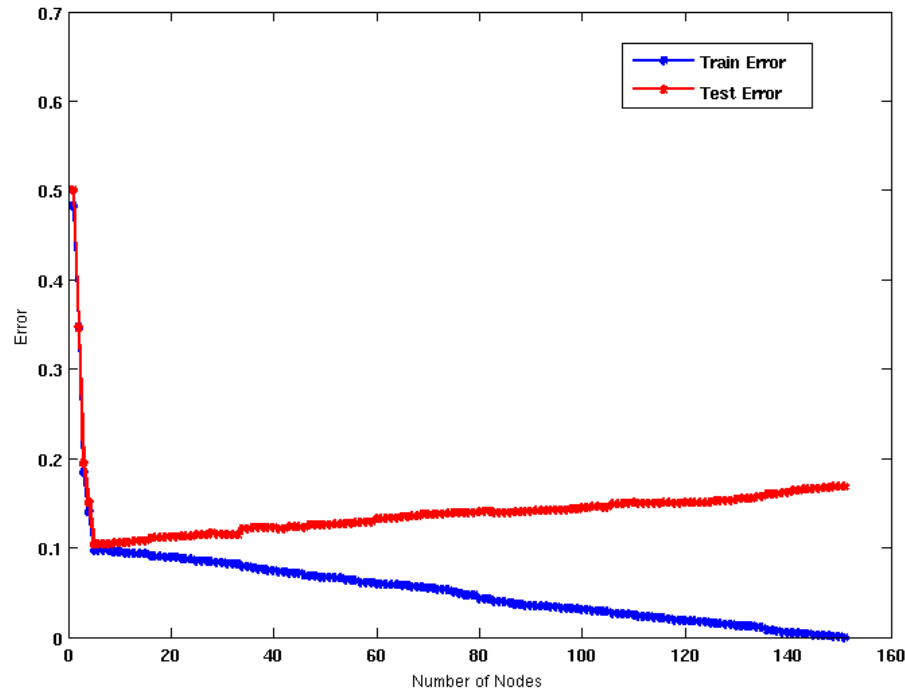
Bias – Variance tradeoff

- **Bias**: Measures how good the model is with respect to the training data
 - High Bias: Underfitting.
 - We have a **poor model**, for example, a tree with a single decision node, or a linear function when modeling a more complex curve
- **Variance**: Measures how sensitive the model error is with respect to changes in the training data
 - High Variance: Overfitting.
 - We have a very **complex model**, for example, a tree with a single sample per leaf, or a very high-degree polynomial curve. Small changes in the data cause errors in the model
- There is a **tradeoff** between these two: decreasing one will increase the other.

Reasons for poor Generalization

- Not enough training data
- Not representative training data
- Erroneous training data
- A model that is too complex for the data we have.
 - Multiple Comparison Procedure

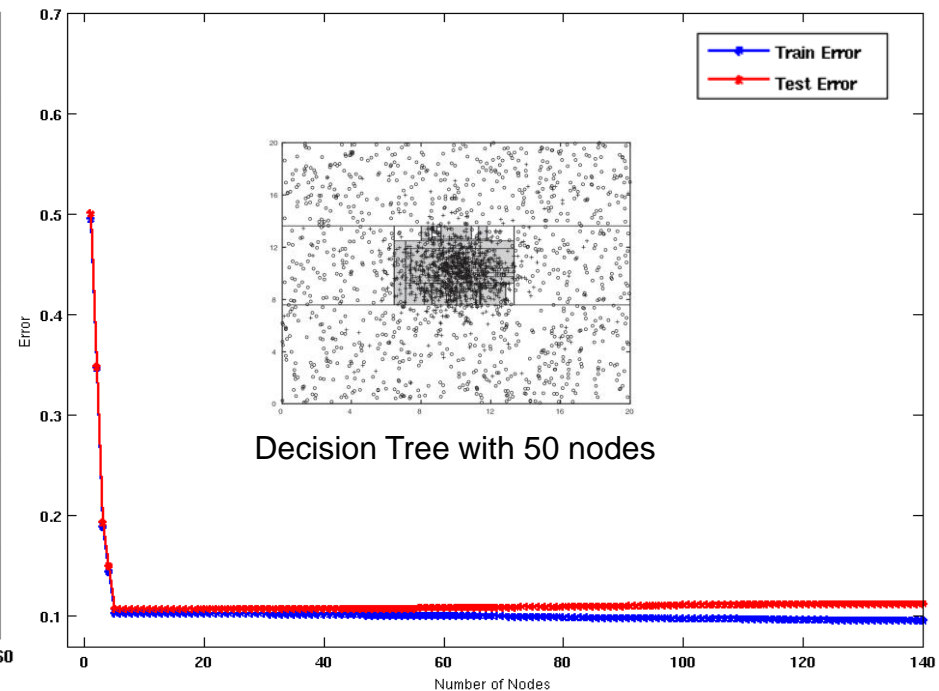
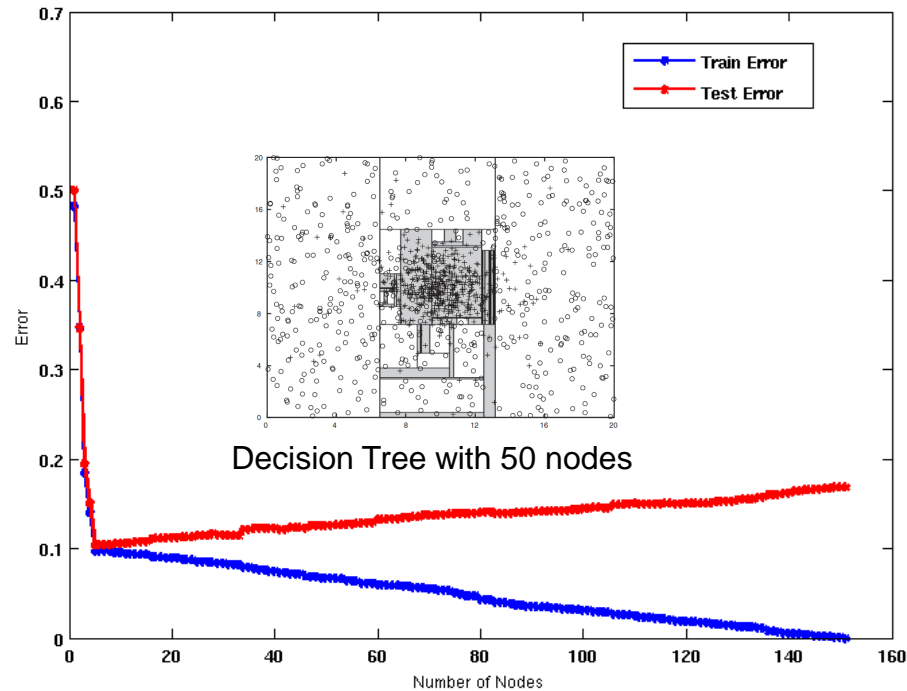
Model Overfitting



Using twice the number of data instances

- Increasing the size of training data reduces the difference between training and testing errors at a given size of model

Model Overfitting



Using twice the number of data instances

- Increasing the size of training data reduces the difference between training and testing errors at a given size of model

Effect of Multiple Comparison Procedure

- Consider the task of predicting whether stock market will rise/fall in the next 10 trading days
- Random guessing:
 $P(\text{correct}) = 0.5$
- Make 10 random guesses in a row:

$$P(\# \text{ correct} \geq 8) = \frac{\binom{10}{8} + \binom{10}{9} + \binom{10}{10}}{2^{10}} = 0.0547$$

Day 1	Up
Day 2	Down
Day 3	Down
Day 4	Up
Day 5	Down
Day 6	Down
Day 7	Up
Day 8	Up
Day 9	Up
Day 10	Down

Effect of Multiple Comparison Procedure

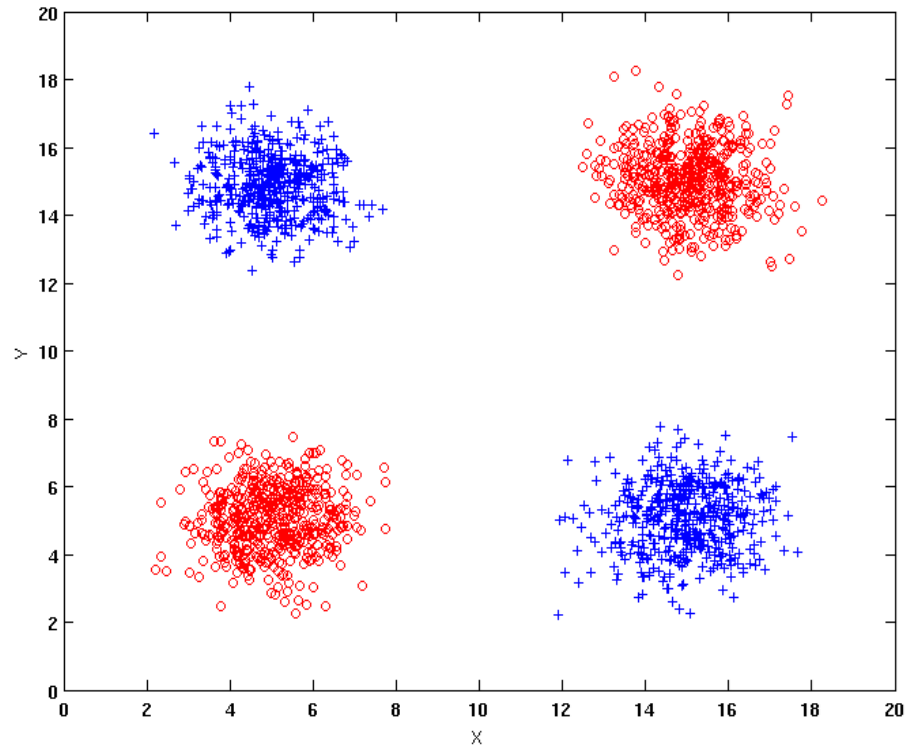
- Approach:
 - Get 50 analysts
 - Each analyst makes 10 random guesses
 - Choose the analyst that makes the most number of correct predictions
- Probability that at least one analyst makes at least 8 correct predictions

$$P(\# \text{ correct} \geq 8) = 1 - (1 - 0.0547)^{50} = 0.9399$$

Effect of Multiple Comparison Procedure

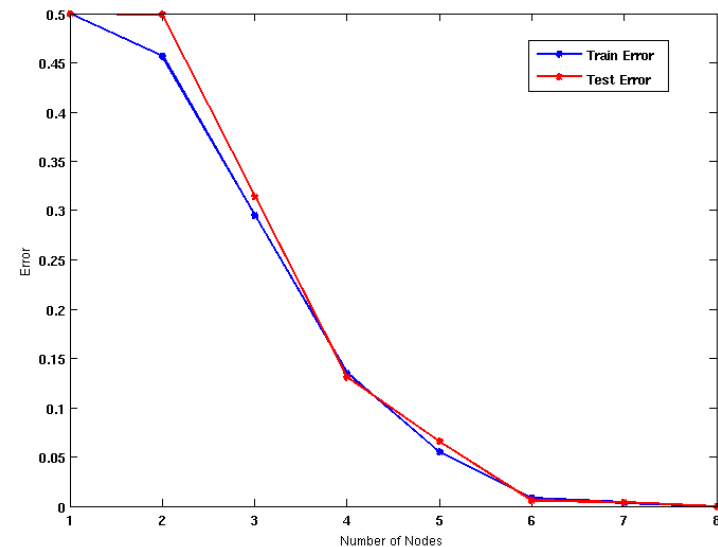
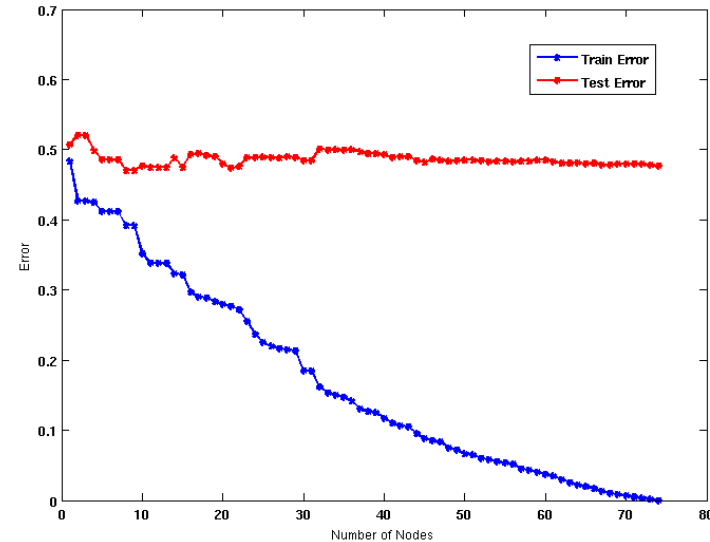
- Many algorithms employ the following greedy strategy:
 - Initial model: M
 - Alternative model: $M' = M + \gamma$,
where γ is a component to be added to the model (e.g., a test condition of a decision tree)
 - Keep M' if improvement, $\Delta(M, M') > \alpha$
- Often times, γ is chosen from a set of alternative components, $\Gamma = \{\gamma_1, \gamma_2, \dots, \gamma_k\}$
- If many alternatives are available, one may inadvertently add irrelevant components to the model, resulting in model overfitting

Effect of Multiple Comparison - Example



Use additional 100 noisy variables generated from a uniform distribution along with X and Y as attributes.

Use 30% of the data for training and 70% of the data for testing



Using only X and Y as attributes

In summary

- When we have a **small number of samples**, and a very **large number of features** then it is likely that we will create a model that **overfits** the data and does not generalize well.

Notes on Overfitting

- **Overfitting** results in decision trees that are **more complex than necessary**
- **Training error** no longer provides a good estimate of **test error**, that is, how well the tree will perform on previously unseen records
- We say that the model does not **generalize** well
- Need ways for estimating the generalization error and select the model.

Model Selection

- Performed during model building
- Purpose is to ensure that model is not overly complex (to avoid overfitting)
- Need to estimate generalization error
 - Using **Validation Set**
 - Incorporating **Model Complexity**

Model Selection: Using Validation Set

- Divide **training** data into two parts:
 - **Training set:**
 - Use for model building
 - **Validation set:**
 - Use for estimating generalization error
 - Note: validation set is not the same as test set since it affects the creation of the model (e.g. in tuning the size of the decision tree)
- Drawback:
 - Less data available for training

Model Selection: Incorporating Model Complexity

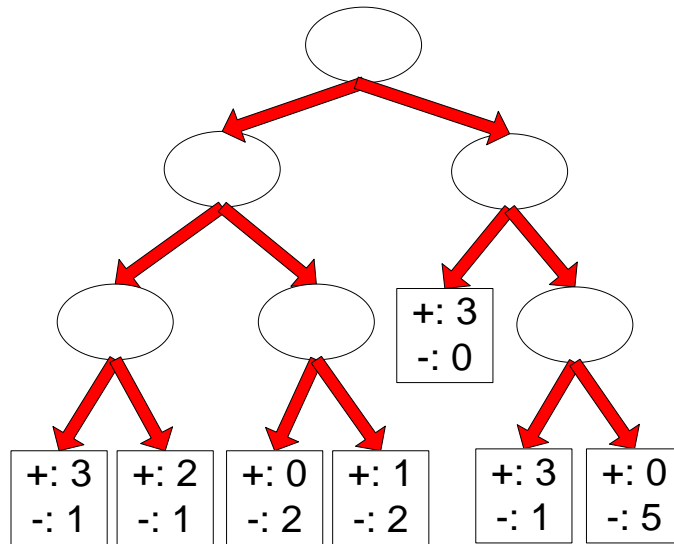
- **Occam's razor:** All other things being equal, the simplest explanation/solution is the best.
 - A good principle for life as well
- Given two models of similar generalization errors, one should prefer the simpler model over the more complex model
- For complex models, there is a greater chance that it was fitted accidentally
- Therefore, one should include model complexity when evaluating a model

$$\text{Gen. Error}(\text{Model}) = \text{Train. Error}(\text{Model}, \text{Train. Data}) + \alpha \times \text{Complexity}(\text{Model})$$

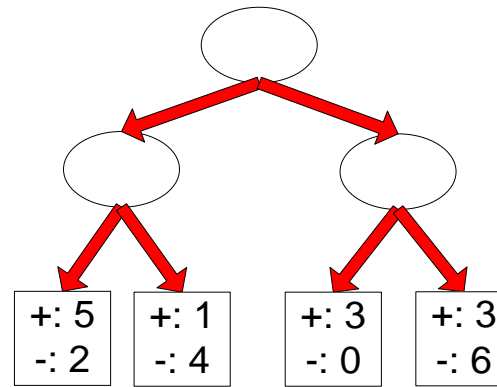
Estimating the Complexity of Decision Trees

- **Resubstitution Estimate:**

- Using **training error** as an optimistic estimate of **generalization error**
- Referred to as **optimistic error estimate**



Decision Tree, T_1



Decision Tree, T_R

$$e(TL) = 4/24$$

$$e(TR) = 6/24$$

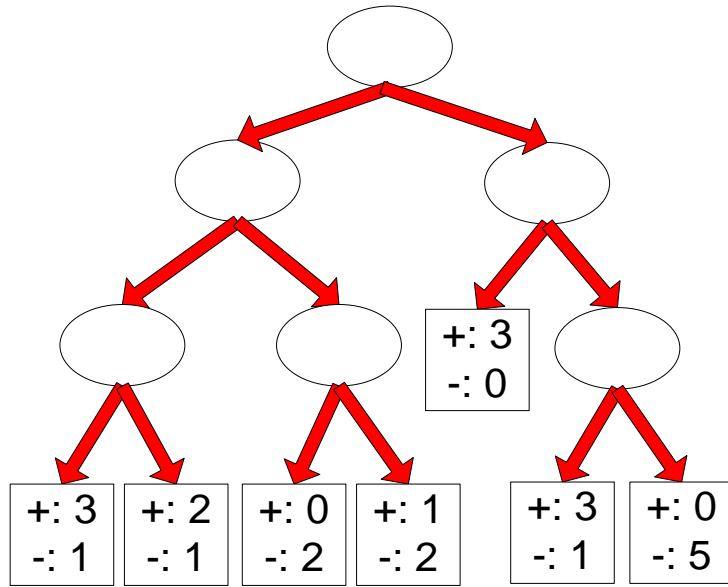
Estimating the Complexity of Decision Trees

- **Pessimistic Error Estimate** of decision tree T with k leaf nodes:

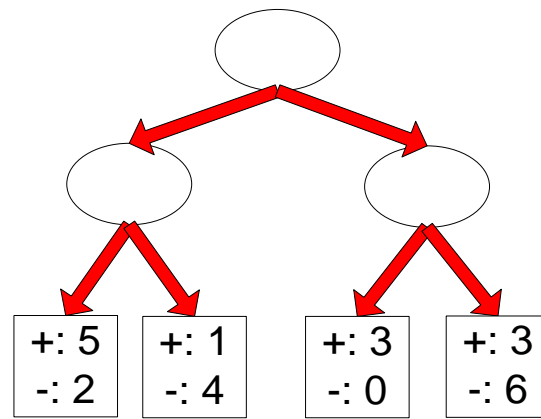
$$err_{gen}(T) = err(T) + \Omega \times \frac{k}{N_{train}}$$

- $err(T)$: error rate on all training records
- Ω : trade-off hyper-parameter (similar to α)
 - Relative cost of adding a leaf node
- k : number of leaf nodes
- N_{train} : total number of training records

Estimating the Complexity of Decision Trees: Example



Decision Tree, T_L



Decision Tree, T_R

$$e(T_L) = 4/24$$

$$e(T_R) = 6/24$$

$$\Omega = 1$$

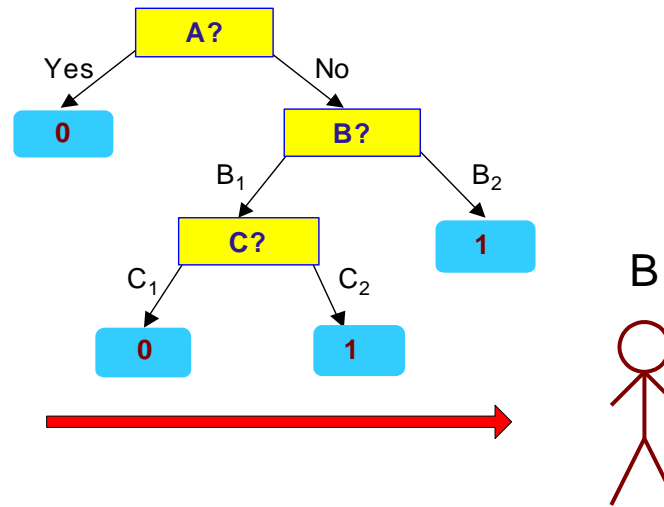
$$e_{gen}(T_L) = 4/24 + 1 * 7/24 = 11/24 = 0.458$$

$$e_{gen}(T_R) = 6/24 + 1 * 4/24 = 10/24 = 0.417$$

Minimum Description Length (MDL)

X	y
X ₁	1
X ₂	0
X ₃	0
X ₄	1
...	...
X _n	1

A



B

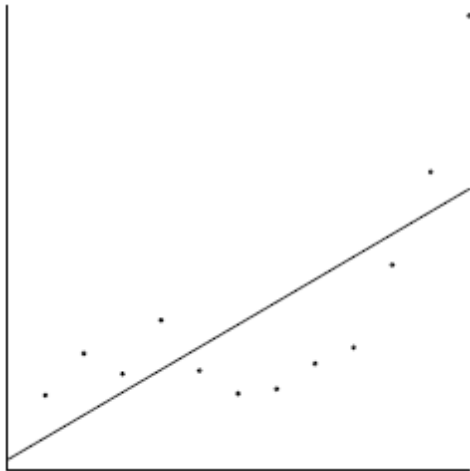


X	y
X ₁	?
X ₂	?
X ₃	?
X ₄	?
...	...
X _n	?

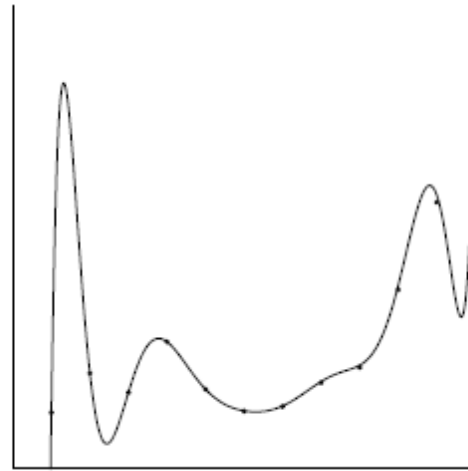
- $\text{Cost}(\text{Model}, \text{Data}) = \text{Cost}(\text{Model}) + \text{Cost}(\text{Data}|\text{Model})$
 - Cost is the number of bits needed for encoding.
 - Search for the least costly model.
- $\text{Cost}(\text{Model})$ encodes the decision tree
 - node encoding (number of children) plus splitting condition encoding.
- $\text{Cost}(\text{Data}|\text{Model})$ encodes the misclassification errors.

Example

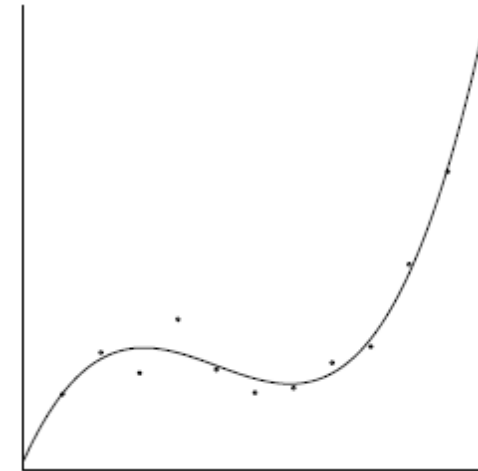
- **Regression**: find a **polynomial** for describing a set of values
 - **Model complexity** (model cost): polynomial coefficients
 - **Goodness of fit** (data cost): difference between real value and the polynomial value



Minimum model cost
High data cost



High model cost
Minimum data cost



Low model cost
Low data cost

MDL avoids **overfitting** automatically!

Model selection for Decision Trees

- Pre-Pruning (Early Stopping Rule)
 - Stop the algorithm before it becomes a fully-grown tree
- Typical stopping conditions for a node:
 - Stop if all instances belong to the same class
 - Stop if all the attribute values are the same
- More restrictive conditions:
 - Stop if number of instances is less than some user-specified threshold
 - Stop if class distribution of instance classes are independent of the available features (e.g., using χ^2 test)
 - Stop if expanding the current node does not improve impurity measures (e.g., Gini or information gain).

Model selection for Decision Trees

- **Post-pruning**
 - Grow decision tree to its entirety
 - Trim the nodes of the decision tree in a **bottom-up** fashion
 - If generalization error improves after trimming, replace sub-tree by a leaf node (**subtree pruning**) or by the most probable subtree (**subtree raising**).
 - Class label of leaf node is determined from majority class of instances in the sub-tree
- Can use **MDL** for post-pruning
 - NP hard problem

Example of Post-Pruning

Class = Yes	20
Class = No	10
Error = 10/30	

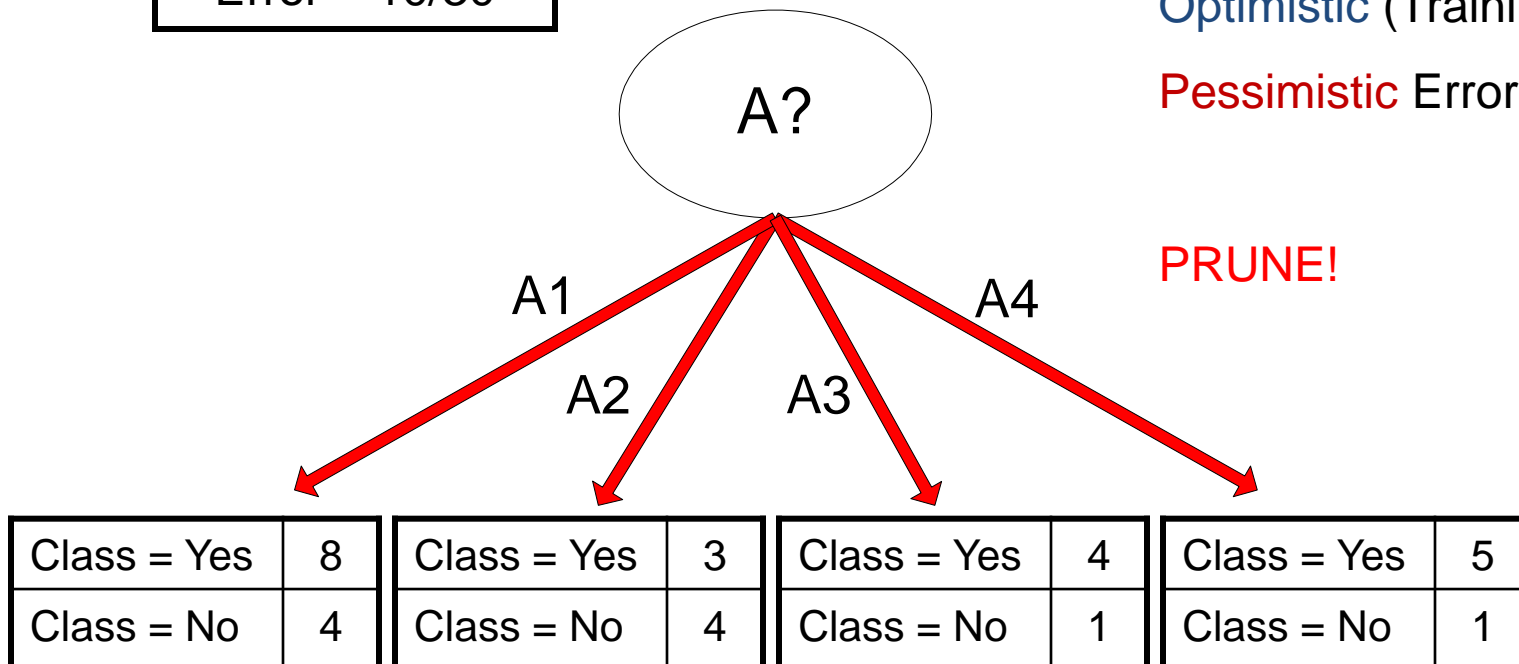
Optimistic (Training) Error (Before splitting) = 10/30

Pessimistic Error = $(10 + 0.5)/30 = 10.5/30$

Optimistic (Training) Error (After splitting) = 9/30

Pessimistic Error (After splitting) = $(9 + 4 \times 0.5)/30 = 11/30$

PRUNE!



Examples of Post-pruning

Decision Tree:

```
depth = 1 :
| breadth > 7 : class 1
| breadth <= 7 :
| | breadth <= 3 :
| | | ImagePages > 0.375 : class 0
| | | ImagePages <= 0.375 :
| | | | totalPages <= 6 : class 1
| | | | totalPages > 6 :
| | | | | breadth <= 1 : class 1
| | | | | breadth > 1 : class 0
| | width > 3 :
| | | MultiIP = 0:
| | | | ImagePages <= 0.1333 : class 1
| | | | ImagePages > 0.1333 :
| | | | | breadth <= 6 : class 0
| | | | | breadth > 6 : class 1
| | | MultiIP = 1:
| | | | TotalTime <= 361 : class 0
| | | | TotalTime > 361 : class 1
| depth > 1 :
| | MultiAgent = 0:
| | | depth > 2 : class 0
| | | depth <= 2 :
| | | | MultiIP = 1: class 0
| | | | MultiIP = 0:
| | | | | breadth <= 6 : class 0
| | | | | breadth > 6 :
| | | | | | RepeatedAccess <= 0.0322 : class 0
| | | | | | RepeatedAccess > 0.0322 : class 1
| | MultiAgent = 1:
| | | totalPages <= 81 : class 0
| | | totalPages > 81 : class 1
```

Subtree
Raising

Simplified Decision Tree:

```
depth = 1 :
| ImagePages <= 0.1333 : class 1
| ImagePages > 0.1333 :
| | breadth <= 6 : class 0
| | breadth > 6 : class 1
depth > 1 :
| MultiAgent = 0: class 0
| MultiAgent = 1:
| | totalPages <= 81 : class 0
| | totalPages > 81 : class 1
```

Subtree
Replacement

EVALUATION

Model Evaluation

- Metrics for Performance Evaluation
 - How to evaluate the performance of a model?
- Methods for Performance Evaluation
 - How to obtain reliable estimates?
- Methods for Model Comparison
 - How to compare the relative performance among competing models?

Metrics for Performance Evaluation

- Focus on the **predictive capability** of a model
 - Rather than how fast it takes to classify or build models, scalability, etc.
- **Confusion Matrix:**

	PREDICTED CLASS		
		Class=Yes	Class=No
	Class=Yes	a	b
	Class=No	c	d

a: TP (true positive)

b: FN (false negative)

c: FP (false positive)

d: TN (true negative)

Metrics for Performance Evaluation...

ACTUAL CLASS	PREDICTED CLASS	
	Class=Yes	Class=No
Class=Yes	a (TP)	b (FN)
	c (FP)	d (TN)

- Most widely-used metric:

$$\text{Accuracy} = \frac{a + d}{a + b + c + d} = \frac{TP + TN}{TP + TN + FP + FN}$$

Precision-Recall

$$\text{Precision (p)} = \frac{a}{a + c} = \frac{TP}{TP + FP}$$

$$\text{Recall (r)} = \frac{a}{a + b} = \frac{TP}{TP + FN}$$

$$\text{F-measure (F)} = \frac{1}{\left(\frac{1/r + 1/p}{2} \right)} = \frac{2rp}{r + p} = \frac{2a}{2a + b + c} = \frac{2TP}{2TP + FP + FN}$$

Count	PREDICTED CLASS	
	Class=Yes	Class=No
	Class=Yes	Class=No
ACTUAL CLASS	a	b
	c	d

Assumption: The class YES is the one we care about.

- Precision is biased towards **C(Yes|Yes)** & **C(Yes|No)**
- Recall is biased towards **C(Yes|Yes)** & **C(No|Yes)**
- F-measure is biased towards all **except C(No|No)**

More Measures of Classification Performance

	PREDICTED CLASS		
		Yes	No
	ACTUAL CLASS		
	Yes	TP	FN
	No	FP	TN

α is the probability that we reject the null hypothesis when it is true.

This is a **Type I error** or a **false positive** (FP).

β is the probability that we accept the null hypothesis when it is false.

This is a **Type II error** or a **false negative** (FN).

$$Accuracy = \frac{TP + TN}{TP + FN + FP + TN}$$

$$ErrorRate = 1 - accuracy$$

$$Precision = Positive Predictive Value = \frac{TP}{TP + FP}$$

$$Recall = Sensitivity = TP Rate = \frac{TP}{TP + FN}$$

$$Specificity = TN Rate = \frac{TN}{TN + FP} \quad (\text{recall for negative class})$$

$$FP Rate = \boxed{\alpha} = \frac{FP}{TN + FP} = 1 - specificity$$

$$FN Rate = \boxed{\beta} = \frac{FN}{FN + TP} = 1 - sensitivity$$

$$Power = sensitivity = 1 - \beta$$

ROC (Receiver Operating Characteristic)

- Developed in 1950s for signal detection theory to analyze noisy signals
 - Characterize the trade-off between positive hits and false alarms
- **ROC** curve plots **TPR (true positive rate)** (on the **y**-axis) against **FPR (false positive rate)** (on the **x**-axis)

Look at the **positive** predictions of the classifier and compute:

$$TPR = \frac{TP}{TP + FN}$$

What fraction of true **positive instances** are predicted **correctly**?
(1-Type II error rate)

$$FPR = \frac{FP}{FP + TN}$$

What fraction of true **negative instances** were predicted **incorrectly**? (Type I error rate)

We want to strike a balance between these two

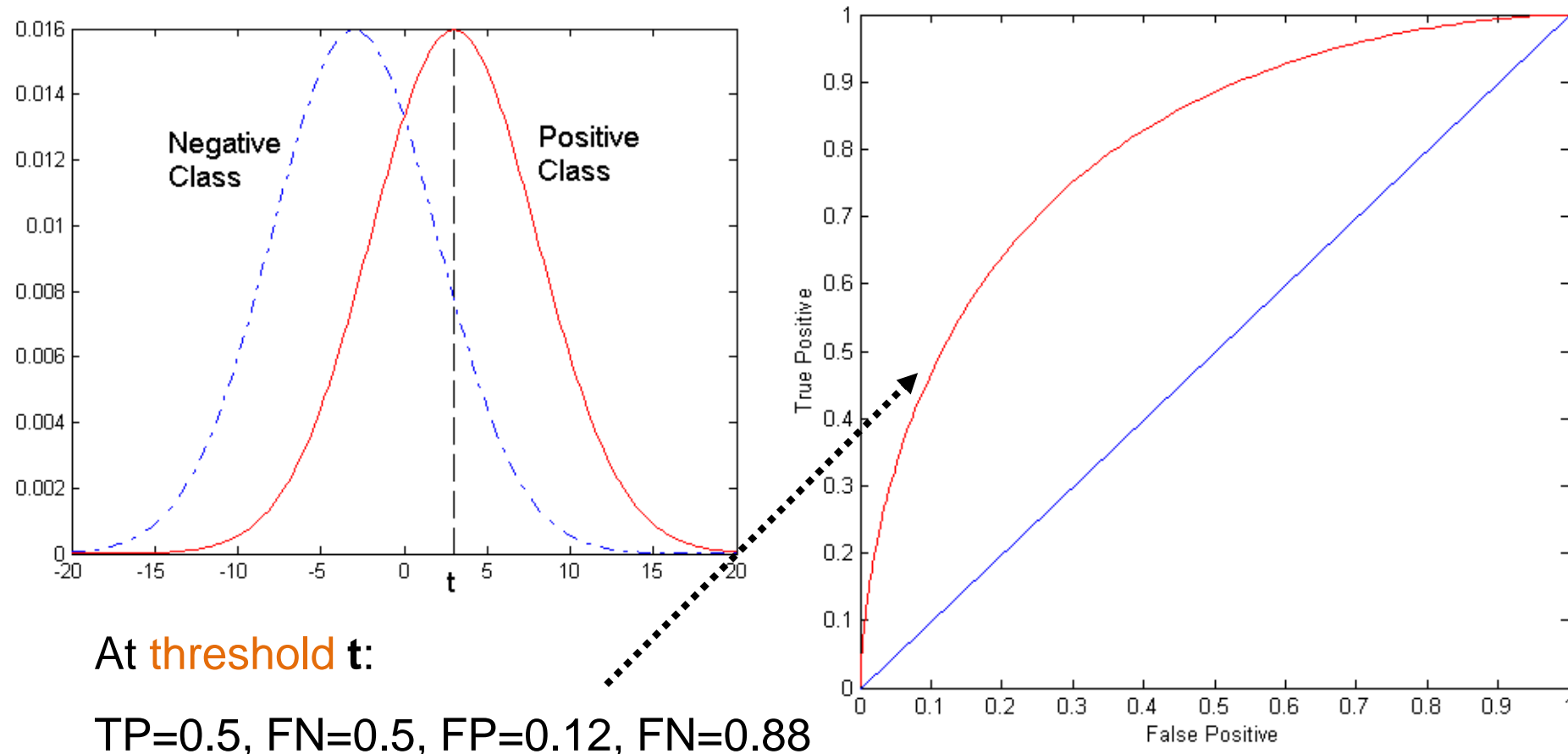
	PREDICTED CLASS		
		Yes	No
	Actual	a (TP)	b (FN)
		c (FP)	d (TN)

ROC (Receiver Operating Characteristic)

- Performance of a classifier represented as a **point** on the **ROC** curve
- Changing some **parameter** of the algorithm, **sample** distribution, or **cost matrix** changes the location of the point

ROC Curve

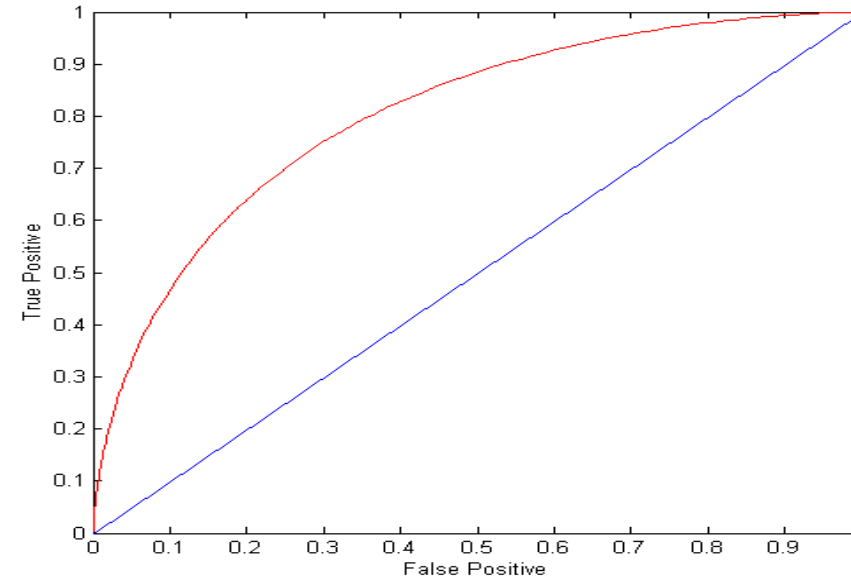
- **1**-dimensional data set containing **2** classes (**positive** and **negative**)
- any points located at $x > t$ is classified as **positive**



ROC Curve

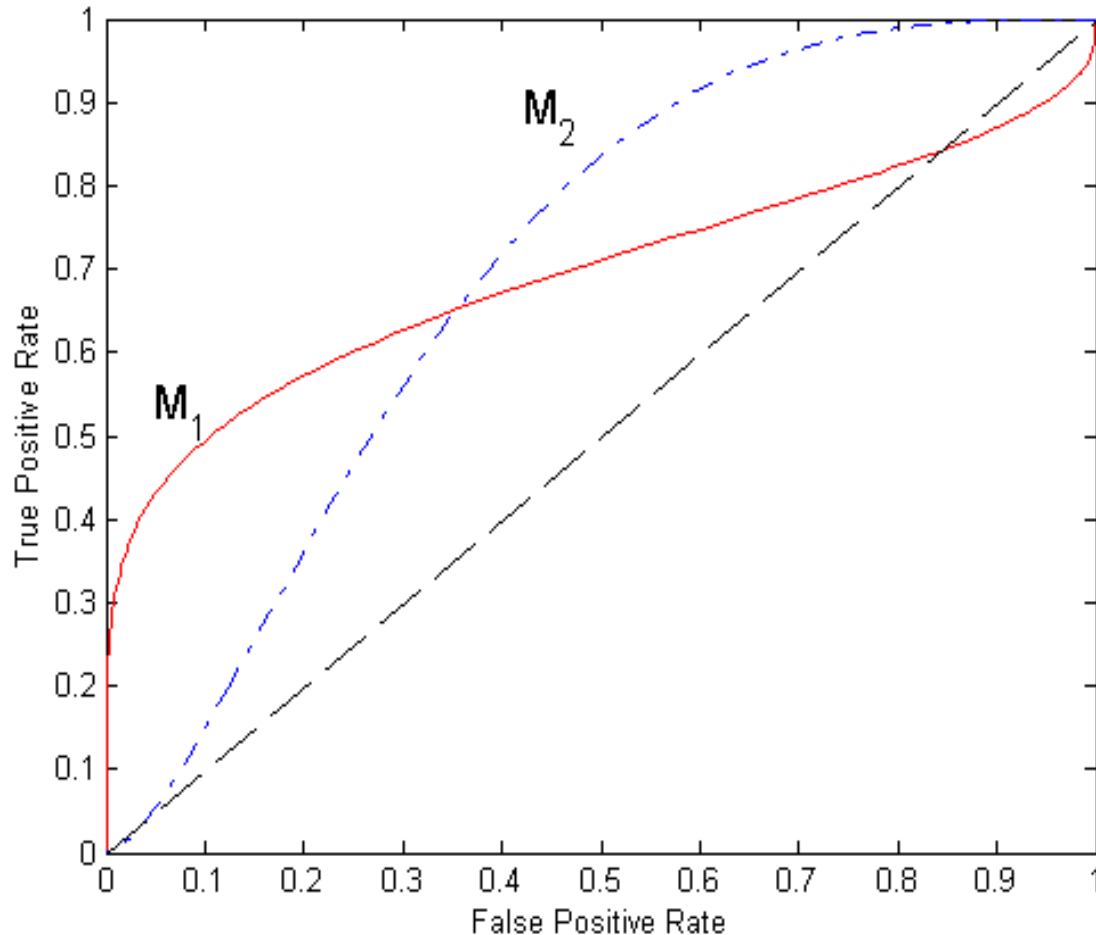
(TP,FP):

- (0,0): declare everything to be negative class
 - (1,1): declare everything to be positive class
 - (1,0): ideal
-
- Diagonal line:
 - Random guessing
 - Below diagonal line:
 - prediction is opposite of the true class



		PREDICTED CLASS	
		Yes	No
Actual	Yes	a (TP)	b (FN)
	No	c (FP)	d (TN)

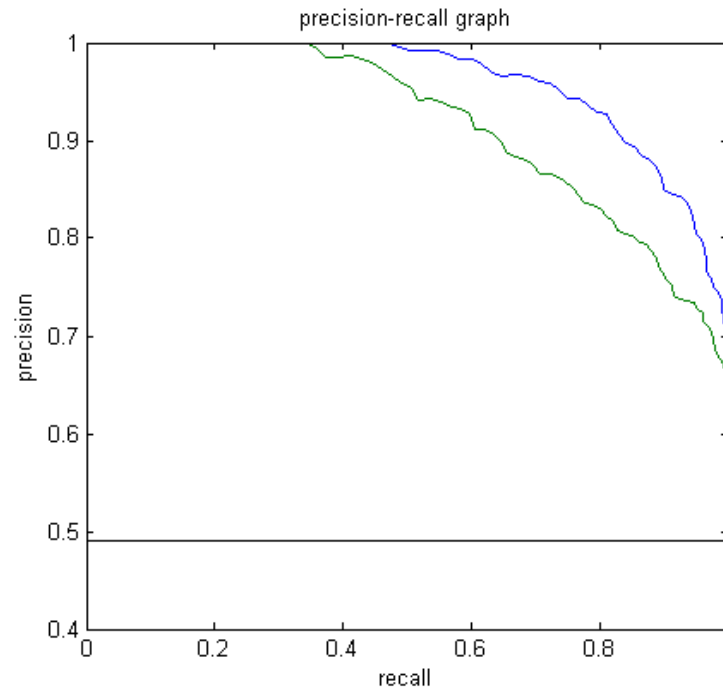
Using ROC for Model Comparison



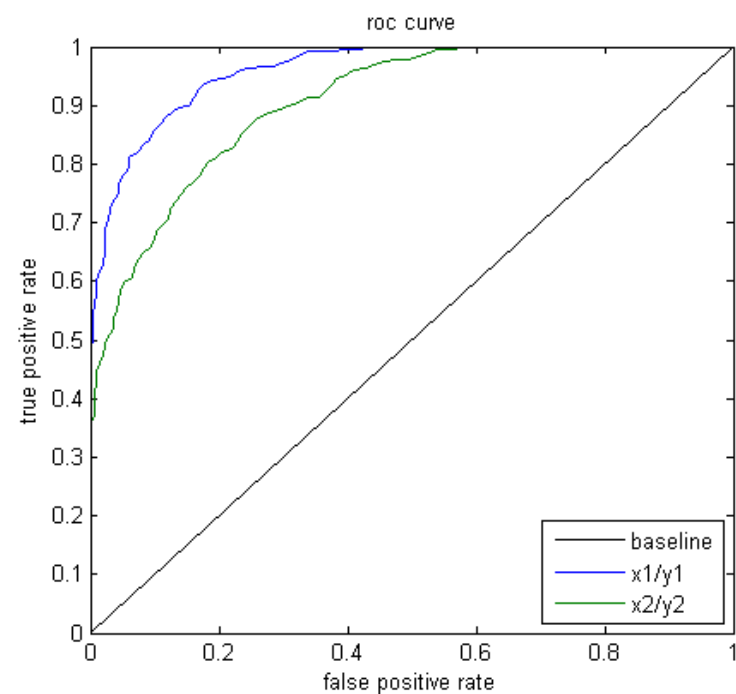
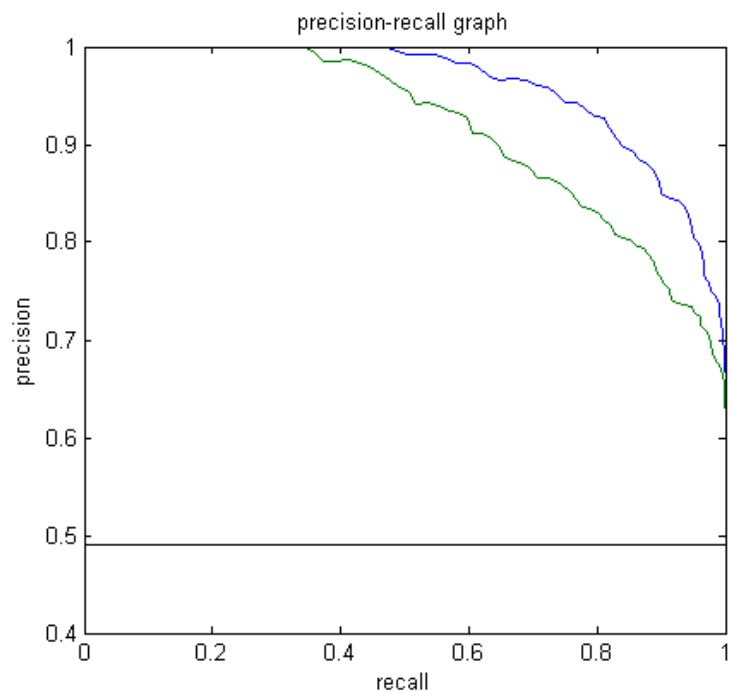
- No model consistently outperform the other
 - M_1 is better for small FPR
 - M_2 is better for large FPR
- Area Under the ROC curve (**AUC**)
 - Ideal: Area = 1
 - Random guess:
 - Area = 0.5

Precision-Recall plot

- Usually for **parameterized** models, it controls the precision/recall tradeoff



ROC curve vs Precision-Recall curve



Area Under the Curve (AUC) as a single number for evaluation

Methods of Performance Estimation

- **Holdout**
 - Reserve $\frac{2}{3}$ for training and $\frac{1}{3}$ for testing
- **Random subsampling**
 - One sample may be biased -- Repeated holdout
- **Cross validation**
 - Partition data into k disjoint subsets
 - k -fold: train on $k-1$ partitions, test on the remaining one
 - **Leave-one-out: $k=n$**
 - Guarantees that each record is used the same number of times for training and testing
- **Bootstrap**
 - Sampling with replacement
 - ~63% of records used for training, ~27% for testing

Class imbalance

- Consider a 2-class problem
 - Number of Class 0 examples = 9990
 - Number of Class 1 examples = 10
- If model predicts everything to be class 0, accuracy is $9990/10000 = 99.9\%$
 - Accuracy is misleading because model does not detect any class 1 example
 - Precision and recall are better measures

Dealing with class Imbalance

- Class imbalance is a problem in training:
 - If the class we are interested in is very rare, then the classifier will ignore it.
- Solution
 - We can **balance** the class distribution
 - Sample from the larger class so that the size of the two classes is the same
 - Replicate the data of the class of interest so that the classes are balanced
 - Over-fitting issues
 - We can modify the optimization criterion by using a **cost sensitive** metric

Cost Matrix

	PREDICTED CLASS		
	$C(i j)$	Class=Yes	Class=No
	Class=Yes	$C(\text{Yes} \text{Yes})$	$C(\text{No} \text{Yes})$
	Class=No	$C(\text{Yes} \text{No})$	$C(\text{No} \text{No})$

$C(i|j)$: Cost of classifying class j example as class i

Weighted Accuracy

CONFUSION MATRIX	PREDICTED CLASS		
		Class=Yes	Class=No
	Class=Yes	a (TP)	b (FN)
	Class=No	c (FP)	d (TN)

COST MATRIX	PREDICTED CLASS		
	C(i j)	Class=Yes	Class=No
	Class=Yes	w_1 C(Yes Yes)	w_2 C(No Yes)
	Class=No	w_3 C(Yes No)	w_4 C(No No)

$$\text{Weighted Accuracy} = \frac{w_1 a + w_4 d}{w_1 a + w_2 b + w_3 c + w_4 d}$$

Computing Cost of Classification

Cost Matrix	PREDICTED CLASS		
ACTUAL CLASS	C(i j)	+	-
	+	1	100
	-	1	1

Model M_1	PREDICTED CLASS		
ACTUAL CLASS		+	-
	+	150	40
	-	60	250

Accuracy = 80%

Weighted Accuracy = 8.9%

Model M_2	PREDICTED CLASS		
ACTUAL CLASS		+	-
	+	250	45
	-	5	200

Accuracy = 90%

Weighted Accuracy = 9%

Classification Cost

CONFUSION MATRIX	PREDICTED CLASS		
		Class=Yes	Class=No
	Class=Yes	a (TP)	b (FN)
	Class=No	c (FP)	d (TN)

COST MATRIX	PREDICTED CLASS		
	C(i j)	Class=Yes	Class=No
	Class=Yes	w_1 C(Yes Yes)	w_2 C(No Yes)
	Class=No	w_3 C(Yes No)	w_4 C(No No)

$$\text{Classification Cost} = w_1 a + w_2 b + w_3 c + w_4 d$$

Some weights can also be negative

Computing Cost of Classification

Cost Matrix	PREDICTED CLASS		
ACTUAL CLASS	C(i j)	+	-
	+	-1	100
	-	1	0

Model M_1	PREDICTED CLASS		
ACTUAL CLASS		+	-
	+	150	40
	-	60	250

Accuracy = 80%

Cost = 3910

Model M_2	PREDICTED CLASS		
ACTUAL CLASS		+	-
	+	250	45
	-	5	200

Accuracy = 90%

Cost = 4255

Cost vs Accuracy

Count	PREDICTED CLASS		
ACTUAL CLASS		Class=Yes	Class=No
	Class=Yes	a	b
	Class=No	c	d

Accuracy is proportional to cost if

1. $C(\text{Yes}|\text{No})=C(\text{No}|\text{Yes}) = q$
2. $C(\text{Yes}|\text{Yes})=C(\text{No}|\text{No}) = p$

$$N = a + b + c + d$$

$$\text{Accuracy} = (a + d)/N$$

Cost	PREDICTED CLASS		
ACTUAL CLASS		Class=Yes	Class=No
	Class=Yes	p	q
	Class=No	q	p

$$\begin{aligned}
 \text{Cost} &= p(a + d) + q(b + c) \\
 &= p(a + d) + q(N - a - d) \\
 &= qN - (q - p)(a + d) \\
 &= N[q - (q - p) \times \text{Accuracy}]
 \end{aligned}$$