

DATA MINING

LECTURE 9

Classification

Basic Concepts

Decision Trees

What is classification?

Tax-return data

<i>Tid</i>	Refund	Marital Status	Taxable Income	Cheat
1	Yes	Single	125K	No
2	No	Married	100K	No
3	No	Single	70K	No
4	Yes	Married	120K	No
5	No	Divorced	95K	Yes
6	No	Married	60K	No
7	Yes	Divorced	220K	No
8	No	Single	85K	Yes
9	No	Married	75K	No
10	No	Single	90K	Yes

Refund	Marital Status	Taxable Income	Cheat
No	Married	80K	?

What is classification?

- **Classification** is the task of *learning a target function f* that maps attribute set x to one of the predefined class labels y

categorical
categorical
continuous
class

Tid	Refund	Marital Status	Taxable Income	Cheat
1	Yes	Single	125K	No
2	No	Married	100K	No
3	No	Single	70K	No
4	Yes	Married	120K	No
5	No	Divorced	95K	Yes
6	No	Married	60K	No
7	Yes	Divorced	220K	No
8	No	Single	85K	Yes
9	No	Married	75K	No
10	No	Single	90K	Yes

One of the attributes is the **class attribute**
In this case: Cheat
Two class labels: **Yes, No**

What is classification?

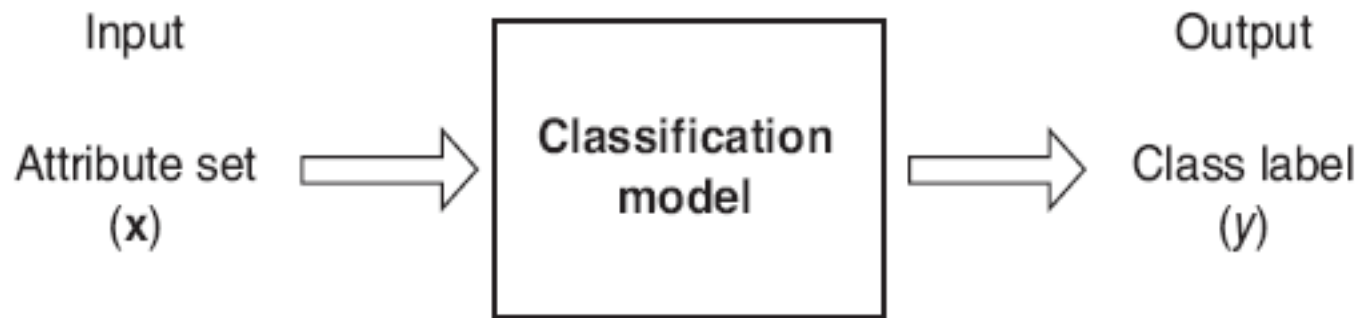


Figure 4.2. Classification as the task of mapping an input attribute set x into its class label y .

Why classification?

- The target function **f** is known as a ***classification model***
- **Descriptive modeling:** ***Explanatory tool*** to distinguish between objects of different classes (e.g., description of who can pay back his loan)
- **Predictive modeling:** Predict a class of a previously ***unseen*** record

Examples of Classification Task

- Predicting tumor cells as benign or malignant
- Classifying credit card transactions as legitimate or fraudulent
- Categorizing news stories as finance, weather, entertainment, sports, etc
- Identifying spam email, spam web pages, adult content
- Categorizing web users, and web queries

General approach to classification

- **Training set** consists of records with **known class labels**
- Training set is used to **build a classification model**
- The classification model is applied to new records with **unknown class labels**
 - A **test set** of **previously unseen** data records is used to evaluate the quality of the model.

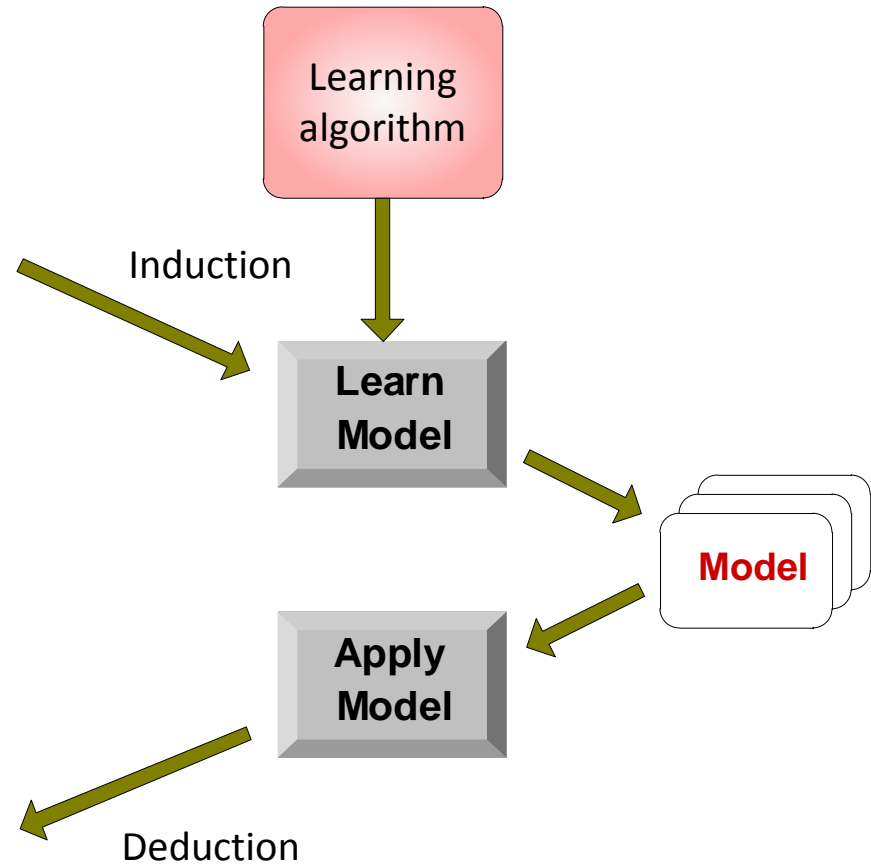
Illustrating Classification Task

Tid	Attrib1	Attrib2	Attrib3	Class
1	Yes	Large	125K	No
2	No	Medium	100K	No
3	No	Small	70K	No
4	Yes	Medium	120K	No
5	No	Large	95K	Yes
6	No	Medium	60K	No
7	Yes	Large	220K	No
8	No	Small	85K	Yes
9	No	Medium	75K	No
10	No	Small	90K	Yes

Training Set

Tid	Attrib1	Attrib2	Attrib3	Class
11	No	Small	55K	?
12	Yes	Medium	80K	?
13	Yes	Large	110K	?
14	No	Small	95K	?
15	No	Large	67K	?

Test Set



Evaluation of classification models

- Counts of test records that are correctly (or incorrectly) predicted by the classification model
- **Confusion matrix**

		Predicted Class	
		Class = 1	Class = 0
Actual Class	Class = 1	f_{11}	f_{10}
	Class = 0	f_{01}	f_{00}

$$\text{Accuracy} = \frac{\# \text{ correct predictions}}{\text{total \# of predictions}} = \frac{f_{11} + f_{00}}{f_{11} + f_{10} + f_{01} + f_{00}}$$

$$\text{Error rate} = \frac{\# \text{ wrong predictions}}{\text{total \# of predictions}} = \frac{f_{10} + f_{01}}{f_{11} + f_{10} + f_{01} + f_{00}}$$

Classification Techniques

- Decision Tree based Methods
- Rule-based Methods
- Memory based reasoning
- Neural Networks
- Naïve Bayes and Bayesian Belief Networks
- Support Vector Machines

Classification Techniques

- Decision Tree based Methods
- Rule-based Methods
- Memory based reasoning
- Neural Networks
- Naïve Bayes and Bayesian Belief Networks
- Support Vector Machines

Decision Trees

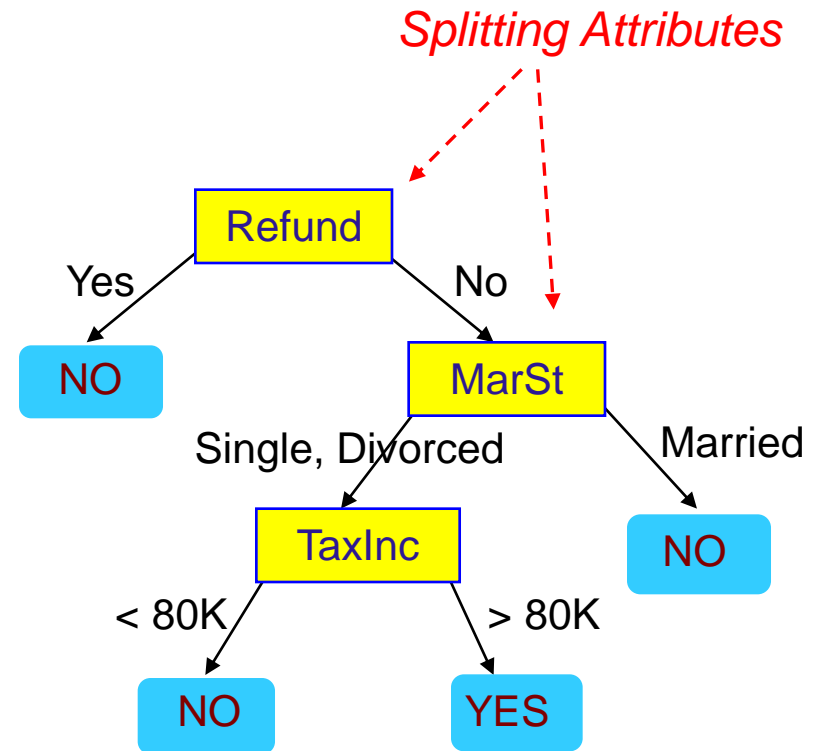
- Decision tree
 - A flow-chart-like tree structure
 - Internal node denotes a test on an attribute
 - Branch represents an outcome of the test
 - Leaf nodes represent class labels or class distribution

Example of a Decision Tree

categorical
categorical
continuous
class

Tid	Refund	Marital Status	Taxable Income	Cheat
1	Yes	Single	125K	No
2	No	Married	100K	No
3	No	Single	70K	No
4	Yes	Married	120K	No
5	No	Divorced	95K	Yes
6	No	Married	60K	No
7	Yes	Divorced	220K	No
8	No	Single	85K	Yes
9	No	Married	75K	No
10	No	Single	90K	Yes

Training Data

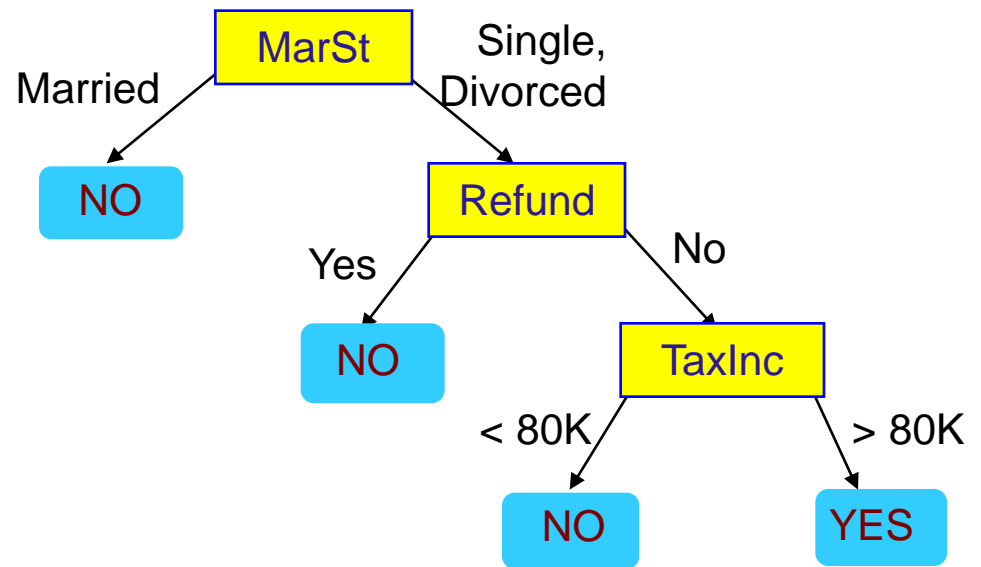


Model: Decision Tree

Another Example of Decision Tree

categorical
categorical
continuous
class

<i>Tid</i>	Refund	Marital Status	Taxable Income	Cheat
1	Yes	Single	125K	No
2	No	Married	100K	No
3	No	Single	70K	No
4	Yes	Married	120K	No
5	No	Divorced	95K	Yes
6	No	Married	60K	No
7	Yes	Divorced	220K	No
8	No	Single	85K	Yes
9	No	Married	75K	No
10	No	Single	90K	Yes



There could be more than one tree that fits the same data!

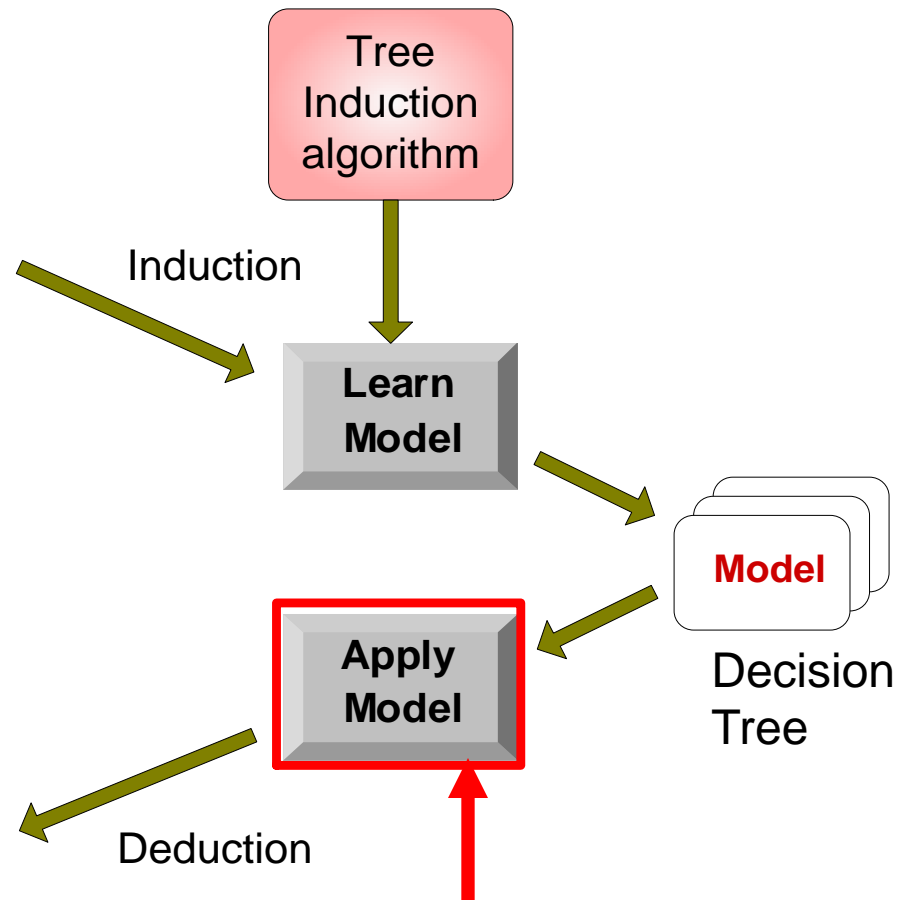
Decision Tree Classification Task

Tid	Attrib1	Attrib2	Attrib3	Class
1	Yes	Large	125K	No
2	No	Medium	100K	No
3	No	Small	70K	No
4	Yes	Medium	120K	No
5	No	Large	95K	Yes
6	No	Medium	60K	No
7	Yes	Large	220K	No
8	No	Small	85K	Yes
9	No	Medium	75K	No
10	No	Small	90K	Yes

Training Set

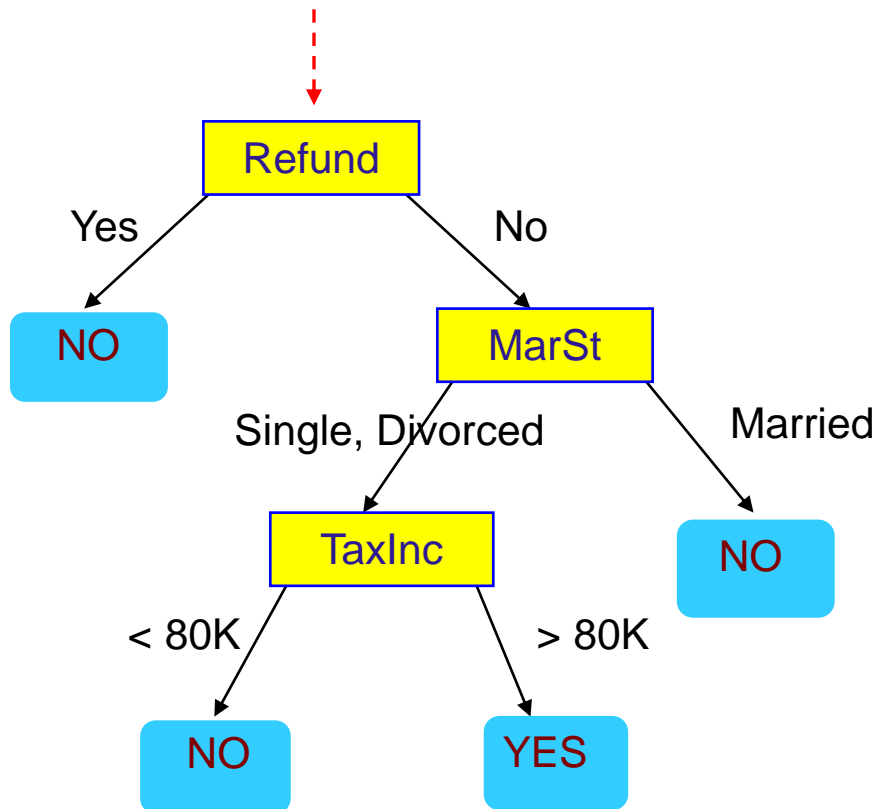
Tid	Attrib1	Attrib2	Attrib3	Class
11	No	Small	55K	?
12	Yes	Medium	80K	?
13	Yes	Large	110K	?
14	No	Small	95K	?
15	No	Large	67K	?

Test Set



Apply Model to Test Data

Start from the root of tree.



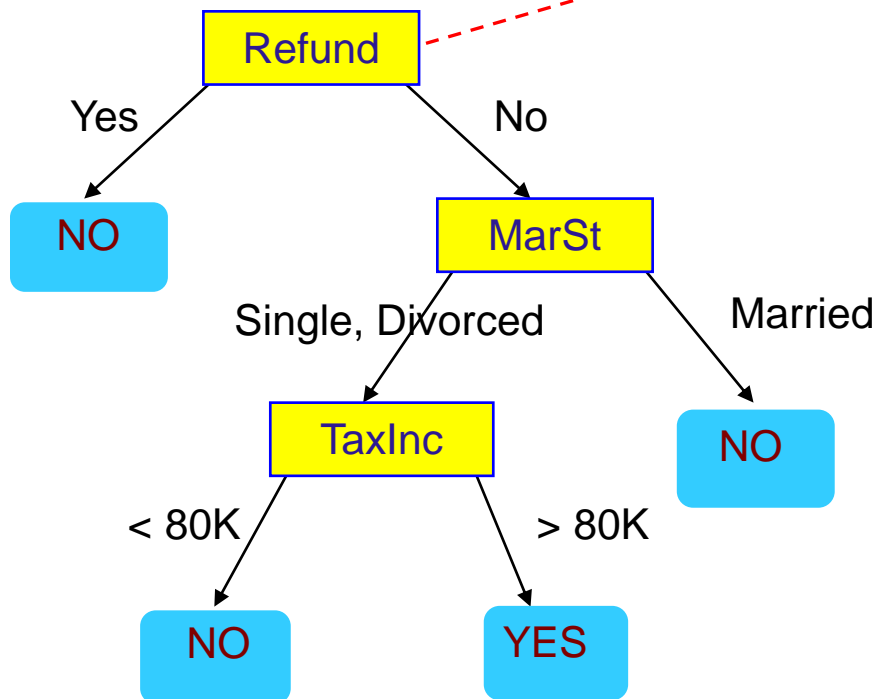
Test Data

Refund	Marital Status	Taxable Income	Cheat
No	Married	80K	?

Apply Model to Test Data

Test Data

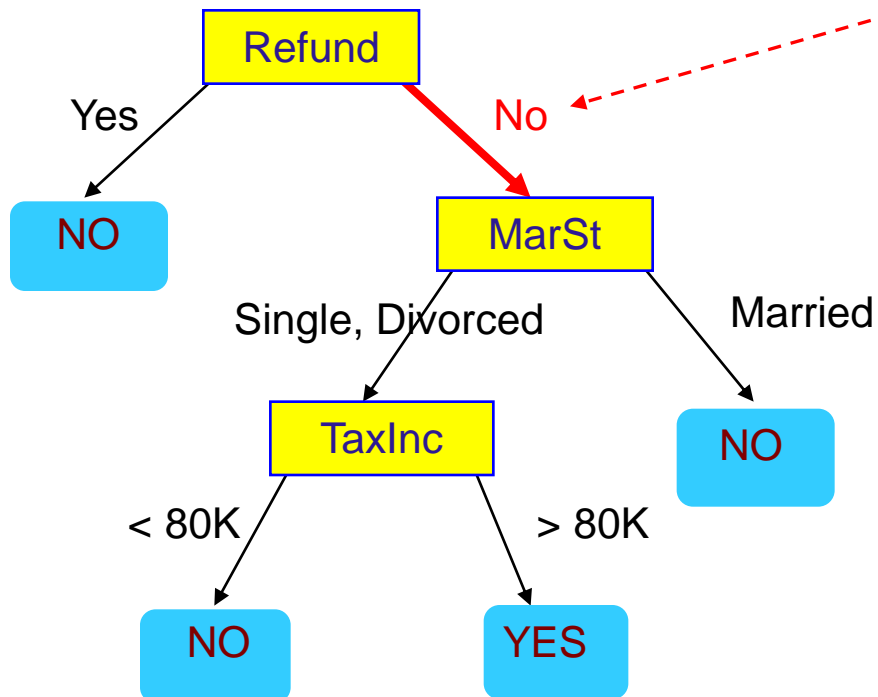
Refund	Marital Status	Taxable Income	Cheat
No	Married	80K	?



Apply Model to Test Data

Test Data

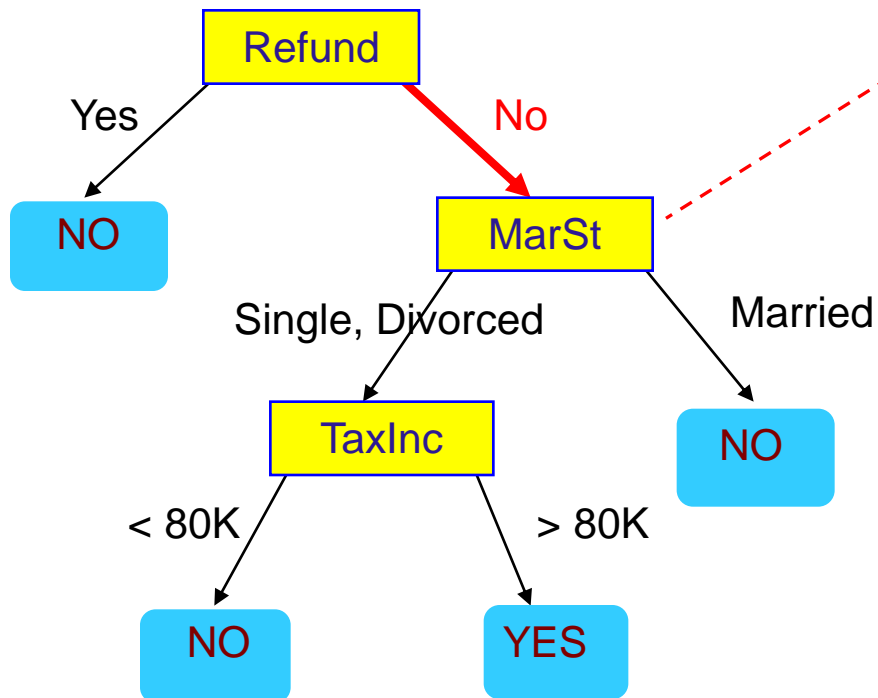
Refund	Marital Status	Taxable Income	Cheat
No	Married	80K	?



Apply Model to Test Data

Test Data

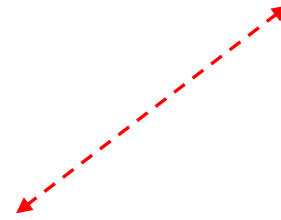
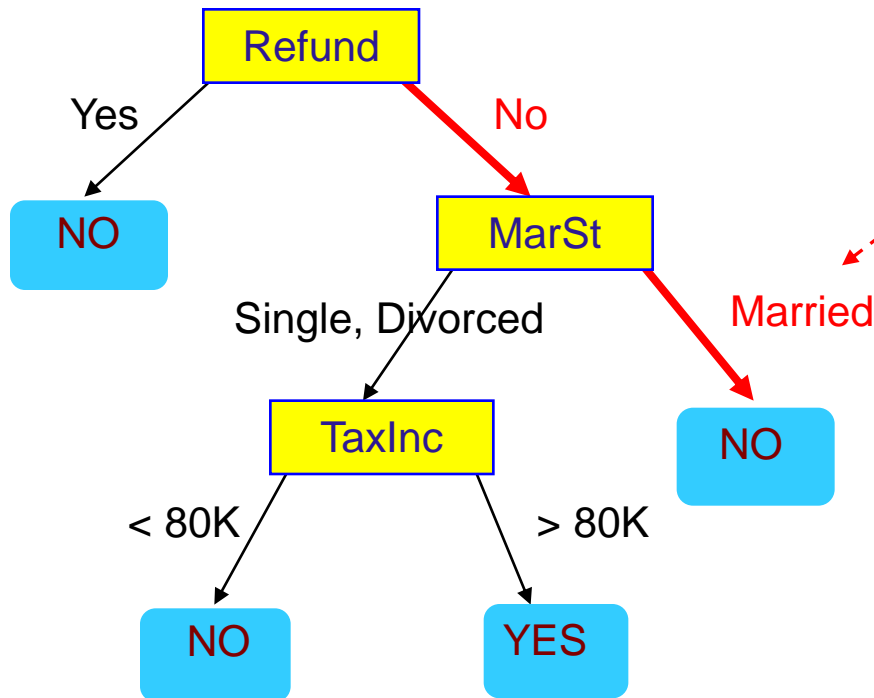
Refund	Marital Status	Taxable Income	Cheat
No	Married	80K	?



Apply Model to Test Data

Test Data

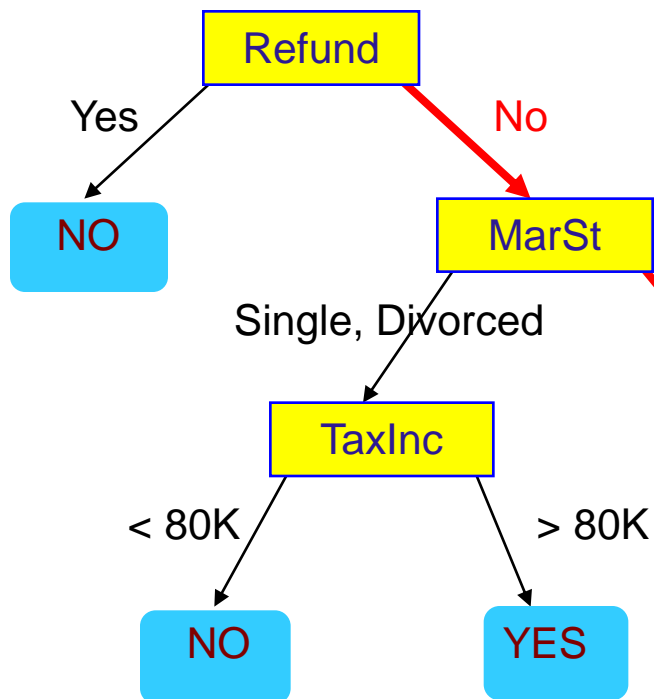
Refund	Marital Status	Taxable Income	Cheat
No	Married	80K	?



Apply Model to Test Data

Test Data

Refund	Marital Status	Taxable Income	Cheat
No	Married	80K	?



Assign Cheat to "No"

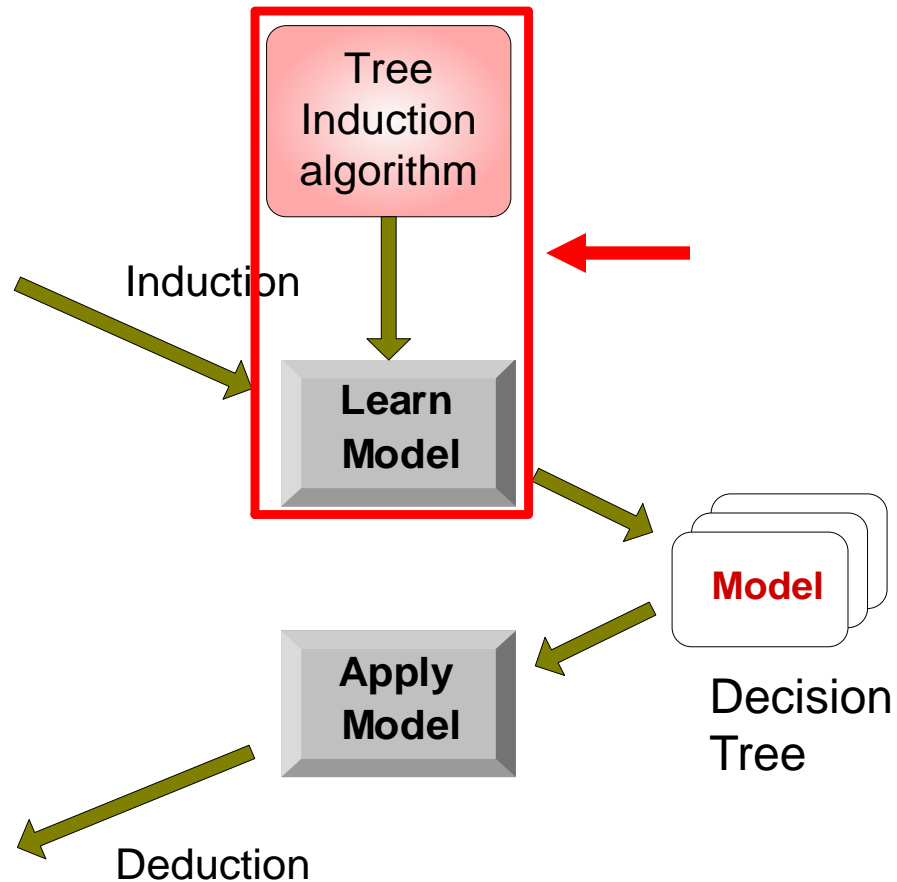
Decision Tree Classification Task

Tid	Attrib1	Attrib2	Attrib3	Class
1	Yes	Large	125K	No
2	No	Medium	100K	No
3	No	Small	70K	No
4	Yes	Medium	120K	No
5	No	Large	95K	Yes
6	No	Medium	60K	No
7	Yes	Large	220K	No
8	No	Small	85K	Yes
9	No	Medium	75K	No
10	No	Small	90K	Yes

Training Set

Tid	Attrib1	Attrib2	Attrib3	Class
11	No	Small	55K	?
12	Yes	Medium	80K	?
13	Yes	Large	110K	?
14	No	Small	95K	?
15	No	Large	67K	?

Test Set



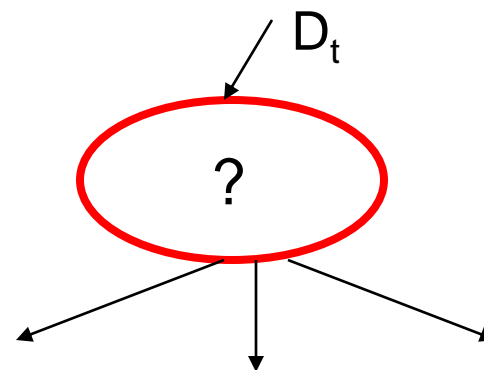
Decision Tree Induction

- Many Algorithms:
 - Hunt's Algorithm (one of the earliest)
 - CART
 - ID3, C4.5
 - SLIQ, SPRINT

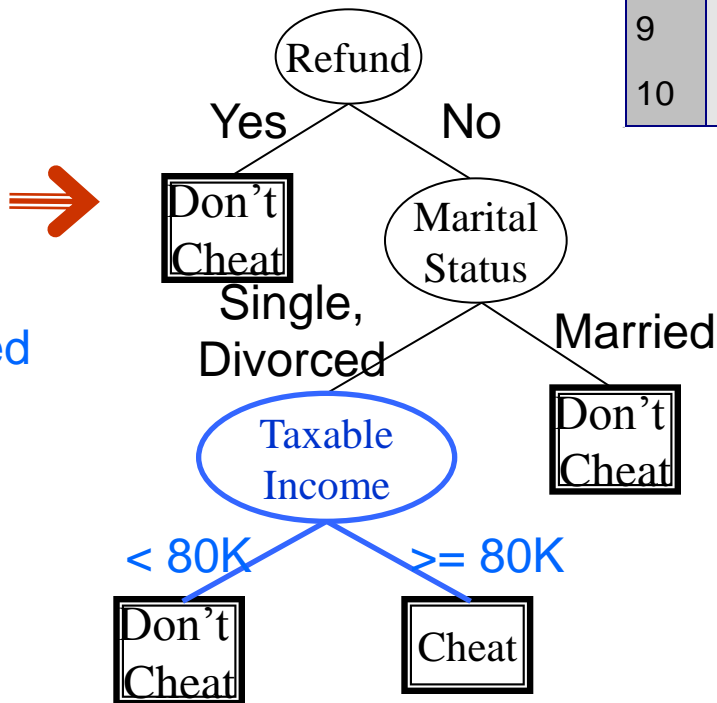
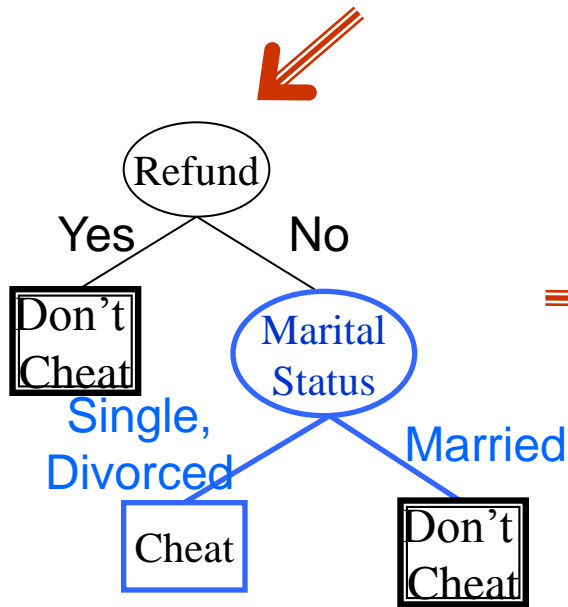
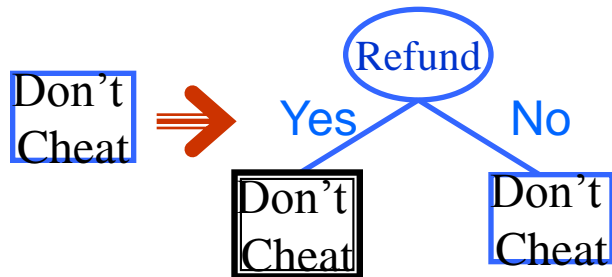
General Structure of Hunt's Algorithm

- Let D_t be the set of training records that reach a node t
- General Procedure:
 - If D_t contains records that belong to the same class y_t , then t is a leaf node labeled as y_t
 - If D_t is an empty set, then t is a leaf node labeled by the default class, y_d
 - If D_t contains records that belong to more than one class, use an attribute test to split the data into smaller subsets.
 - Recursively apply the procedure to each subset.

<i>Tid</i>	Refund	Marital Status	Taxable Income	Cheat
1	Yes	Single	125K	No
2	No	Married	100K	No
3	No	Single	70K	No
4	Yes	Married	120K	No
5	No	Divorced	95K	Yes
6	No	Married	60K	No
7	Yes	Divorced	220K	No
8	No	Single	85K	Yes
9	No	Married	75K	No
10	No	Single	90K	Yes



Hunt's Algorithm



Tid	Refund	Marital Status	Taxable Income	Cheat
1	Yes	Single	125K	No
2	No	Married	100K	No
3	No	Single	70K	No
4	Yes	Married	120K	No
5	No	Divorced	95K	Yes
6	No	Married	60K	No
7	Yes	Divorced	220K	No
8	No	Single	85K	Yes
9	No	Married	75K	No
10	No	Single	90K	Yes

Tree Induction

- Finding the best decision tree is **NP-hard**
- **Greedy** strategy.
 - Split the records based on an attribute test that optimizes **certain criterion**.

Constructing decision-trees (pseudocode)

GenDecTree(Sample **S**, Features **F**)

1. If **stopping_condition**(**S**,**F**) = true then
 - a. leaf = **createNode**()
 - b. leaf.label = **Classify**(**S**)
 - c. return leaf
2. root = **createNode**()
3. root.test_condition = **findBestSplit**(**S**,**F**)
4. **V** = {**v** | **v** a possible outcome of root.test_condition}
5. for each value **v** ∈ **V**:
 - a. **S_v** := {**s** | root.test_condition(**s**) = **v** and **s** ∈ **S**};
 - b. child = **TreeGrowth**(**S_v**, **F**);
 - c. Add child as a descent of root and label the edge (root → child) as **v**
6. return root

Tree Induction

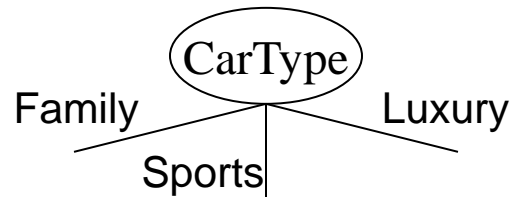
- Greedy strategy.
 - Split the records based on an attribute test that optimizes certain criterion.
- Issues
 - Determine how to split the records
 - How to specify the attribute test condition?
 - How to determine the best split?
 - Determine when to stop splitting

How to Specify Test Condition?

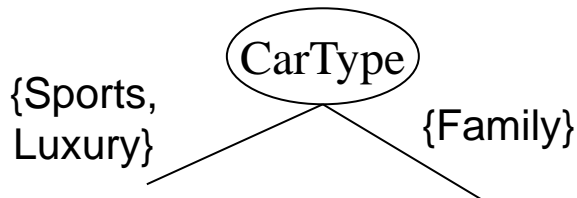
- Depends on attribute types
 - Nominal
 - Ordinal
 - Continuous
- Depends on number of ways to split
 - 2-way split
 - Multi-way split

Splitting Based on Nominal Attributes

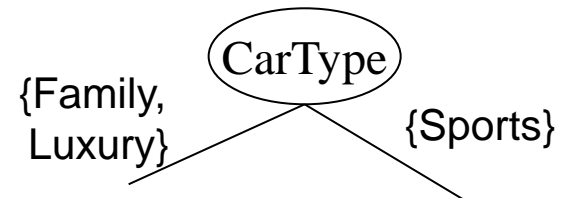
- **Multi-way split:** Use as many partitions as distinct values.



- **Binary split:** Divides values into two subsets. Need to find optimal partitioning.

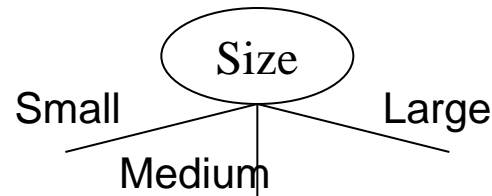


OR

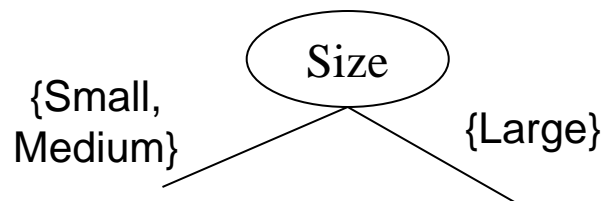


Splitting Based on Ordinal Attributes

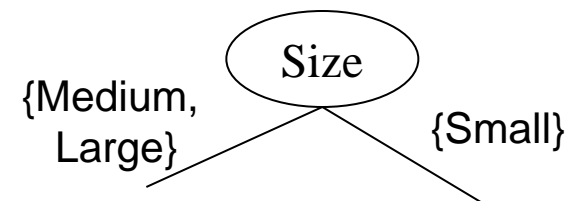
- **Multi-way split:** Use as many partitions as distinct values.



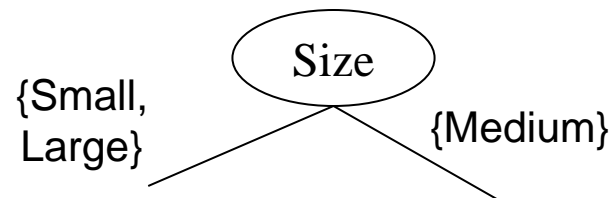
- **Binary split:** Divides values into two subsets. Need to find optimal partitioning.



OR



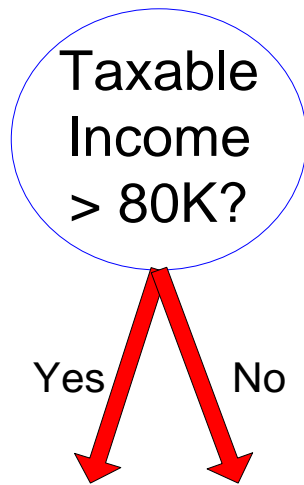
- What about this split?



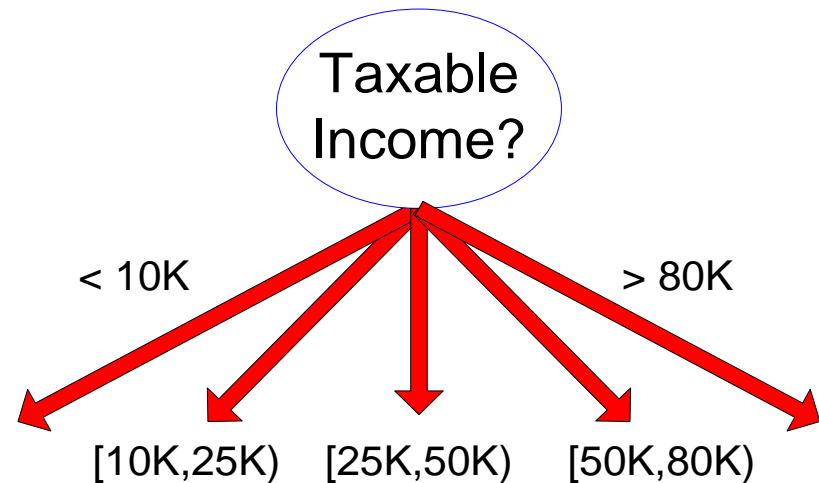
Splitting Based on Continuous Attributes

- Different ways of handling
 - **Discretization** to form an ordinal categorical attribute
 - Static – discretize once at the beginning
 - Dynamic – ranges can be found by equal interval bucketing, equal frequency bucketing (percentiles), or clustering.
 - **Binary Decision**: $(A < v)$ or $(A \geq v)$
 - consider all possible splits and finds the best cut
 - can be more compute intensive

Splitting Based on Continuous Attributes



(i) Binary split



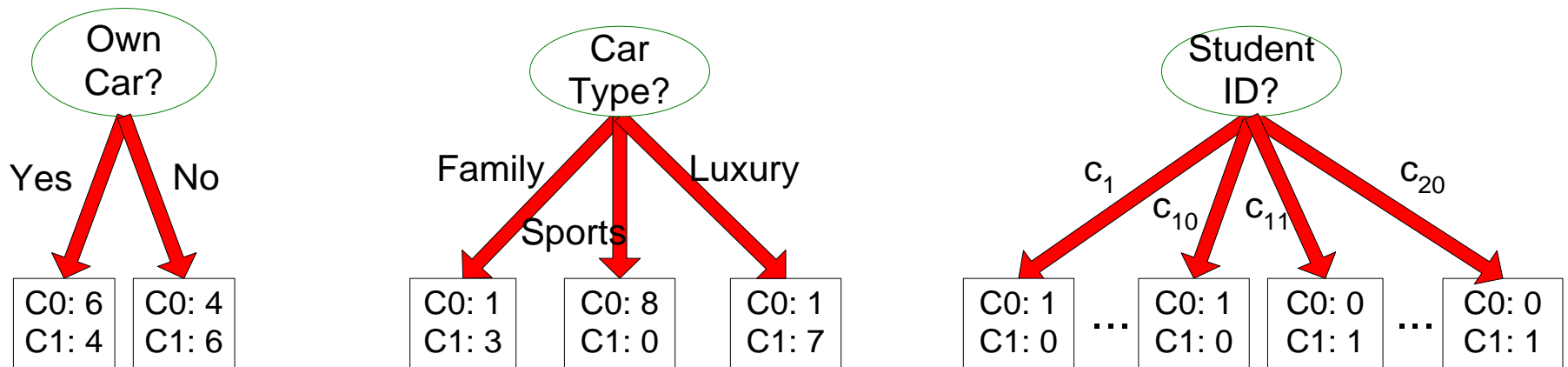
(ii) Multi-way split

Tree Induction

- Greedy strategy.
 - Split the records based on an attribute test that optimizes certain criterion.
- Issues
 - Determine how to split the records
 - How to specify the attribute test condition?
 - How to determine the best split?
 - Determine when to stop splitting

How to determine the Best Split

Before Splitting: 10 records of class 0,
10 records of class 1



Which test condition is the best?

How to determine the Best Split

- Greedy approach:
 - Nodes with **homogeneous** class distribution are preferred
- Need a measure of node **impurity**:

C0: 5
C1: 5

Non-homogeneous,
High degree of impurity

C0: 9
C1: 1

Homogeneous,
Low degree of impurity

Measuring Node Impurity

- $p(i|t)$: fraction of records associated with node t belonging to class i

$$\text{Entropy}(t) = -\sum_{i=1}^c p(i|t) \log p(i|t)$$

$$\text{Gini}(t) = 1 - \sum_{i=1}^c [p(i|t)]^2$$

$$\text{Classification error}(t) = 1 - \max_i [p(i|t)]$$

Gain

- **Gain of an attribute split:** compare the impurity of the parent node with the impurity of the child nodes

$$\Delta = I(\text{parent}) - \sum_{j=1}^k \frac{N(v_j)}{N} I(v_j)$$

- Maximizing the gain \Leftrightarrow Minimizing the weighted average impurity measure of children nodes
- If $I() = \text{Entropy}()$, then Δ_{info} is called **information gain**

Measure of Impurity: GINI

- Gini Index for a given node t :

$$GINI(t) = 1 - \sum_j [p(j | t)]^2$$

(Reminder: $p(j | t)$ is the relative frequency of class j at node t).

- Maximum ($1 - 1/n_c$) when records are equally distributed among all classes, implying least interesting information
- Minimum (0.0) when all records belong to one class, implying most interesting information

C1	0
C2	6
Gini=0.000	

C1	1
C2	5
Gini=0.278	

C1	2
C2	4
Gini=0.444	

C1	3
C2	3
Gini=0.500	

Examples for computing GINI

$$GINI(t) = 1 - \sum_j [p(j|t)]^2$$

C1	0
C2	6

$$P(C1) = 0/6 = 0 \quad P(C2) = 6/6 = 1$$

$$Gini = 1 - P(C1)^2 - P(C2)^2 = 1 - 0 - 1 = 0$$

C1	1
C2	5

$$P(C1) = 1/6 \quad P(C2) = 5/6$$

$$Gini = 1 - (1/6)^2 - (5/6)^2 = 0.278$$

C1	2
C2	4

$$P(C1) = 2/6 \quad P(C2) = 4/6$$

$$Gini = 1 - (2/6)^2 - (4/6)^2 = 0.444$$

Splitting Based on GINI

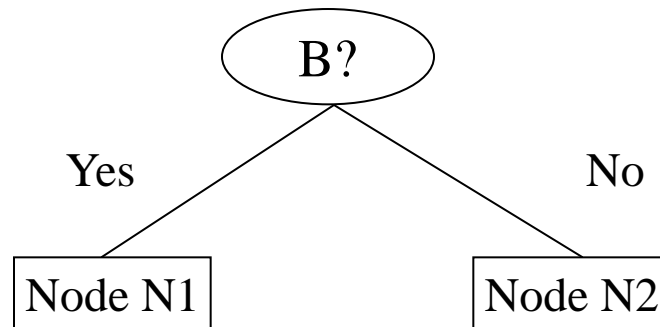
- Used in CART, SLIQ, SPRINT.
- When a node p is split into k partitions (children), the quality of split is computed as,

$$GINI_{split} = \sum_{i=1}^k \frac{n_i}{n} GINI(i)$$

where, n_i = number of records at child i ,
 n = number of records at node p .

Binary Attributes: Computing GINI Index

- Splits into two partitions
- Effect of Weighing partitions:
 - Larger and Purer Partitions are sought for.



	Parent
C1	6
C2	6
Gini = 0.500	

$$\begin{aligned} \text{Gini}(N1) &= 1 - (5/6)^2 - (2/6)^2 \\ &= 0.194 \end{aligned}$$

$$\begin{aligned} \text{Gini}(N2) &= 1 - (1/6)^2 - (4/6)^2 \\ &= 0.528 \end{aligned}$$

	N1	N2
C1	5	1
C2	2	4
Gini=0.333		

$$\begin{aligned} \text{Gini}(\text{Children}) &= 7/12 * 0.194 + \\ &\quad 5/12 * 0.528 \\ &= 0.333 \end{aligned}$$

Categorical Attributes: Computing Gini Index

- For each distinct value, gather counts for each class in the dataset
- Use the count matrix to make decisions

Multi-way split

	CarType		
	Family	Sports	Luxury
C1	1	2	1
C2	4	1	1
Gini	0.393		

Two-way split
(find best partition of values)

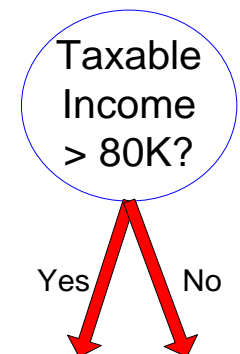
	CarType	
	{Sports, Luxury}	{Family}
C1	3	1
C2	2	4
Gini	0.400	

	CarType	
	{Sports}	{Family, Luxury}
C1	2	2
C2	1	5
Gini	0.419	

Continuous Attributes: Computing Gini Index

- Use Binary Decisions based on one value
- Several Choices for the splitting value
 - Number of possible splitting values = Number of distinct values
- Each splitting value has a count matrix associated with it
 - Class counts in each of the partitions, $A < v$ and $A \geq v$
- Simple method to choose best v
 - For each v , scan the database to gather count matrix and compute its Gini index
 - Computationally Inefficient! Repetition of work.

<i>Tid</i>	Refund	Marital Status	Taxable Income	Cheat
1	Yes	Single	125K	No
2	No	Married	100K	No
3	No	Single	70K	No
4	Yes	Married	120K	No
5	No	Divorced	95K	Yes
6	No	Married	60K	No
7	Yes	Divorced	220K	No
8	No	Single	85K	Yes
9	No	Married	75K	No
10	No	Single	90K	Yes



Continuous Attributes: Computing Gini Index...

- For efficient computation: for each attribute,
 - Sort the attribute on values
 - Linearly scan these values, each time updating the count matrix and computing gini index
 - Choose the split position that has the least gini index

Cheat		No	No	No	Yes	Yes	Yes	No	No	No	No											
		Taxable Income																				
Sorted Values		60	70	75	85	90	95	100	120	125	220											
Split Positions		55	65	72	80	87	92	97	110	122	172	230										
		<= >	<= >	<= >	<= >	<= >	<= >	<= >	<= >	<= >	<= >	<= >										
Yes	0	3	0	3	0	3	0	3	1	2	2	1	3	0	3	0	3	0	3	0		
No	0	7	1	6	2	5	3	4	3	4	3	4	3	4	4	3	5	2	6	1	7	0
Gini	0.420	0.420	0.400	0.375	0.343	0.417	0.400	<u>0.300</u>	0.343	0.375	0.400	0.420										

Alternative Splitting Criteria based on INFO

- Entropy at a given node t :

$$Entropy(t) = -\sum_j p(j | t) \log p(j | t)$$

(NOTE: $p(j | t)$ is the relative frequency of class j at node t).

- Measures homogeneity of a node.
 - Maximum ($\log n_c$) when records are equally distributed among all classes implying least information
 - Minimum (0.0) when all records belong to one class, implying most information
- Entropy based computations are similar to the GINI index computations

Examples for computing Entropy

$$Entropy(t) = -\sum_j p(j|t) \log_2 p(j|t)$$

C1	0
C2	6

$$P(C1) = 0/6 = 0 \quad P(C2) = 6/6 = 1$$

$$Entropy = -0 \log 0 - 1 \log 1 = -0 - 0 = 0$$

C1	1
C2	5

$$P(C1) = 1/6 \quad P(C2) = 5/6$$

$$Entropy = - (1/6) \log_2 (1/6) - (5/6) \log_2 (1/6) = 0.65$$

C1	2
C2	4

$$P(C1) = 2/6 \quad P(C2) = 4/6$$

$$Entropy = - (2/6) \log_2 (2/6) - (4/6) \log_2 (4/6) = 0.92$$

Splitting Based on INFO...

- Information Gain:

$$GAIN_{split} = Entropy(p) - \left(\sum_{i=1}^k \frac{n_i}{n} Entropy(i) \right)$$

Parent Node, p is split into k partitions;

n_i is number of records in partition i

- Measures Reduction in Entropy achieved because of the split. Choose the split that achieves most reduction (maximizes GAIN)
- Used in ID3 and C4.5
- Disadvantage:** Tends to prefer splits that result in large number of partitions, each being small but pure.

Splitting based on INFO

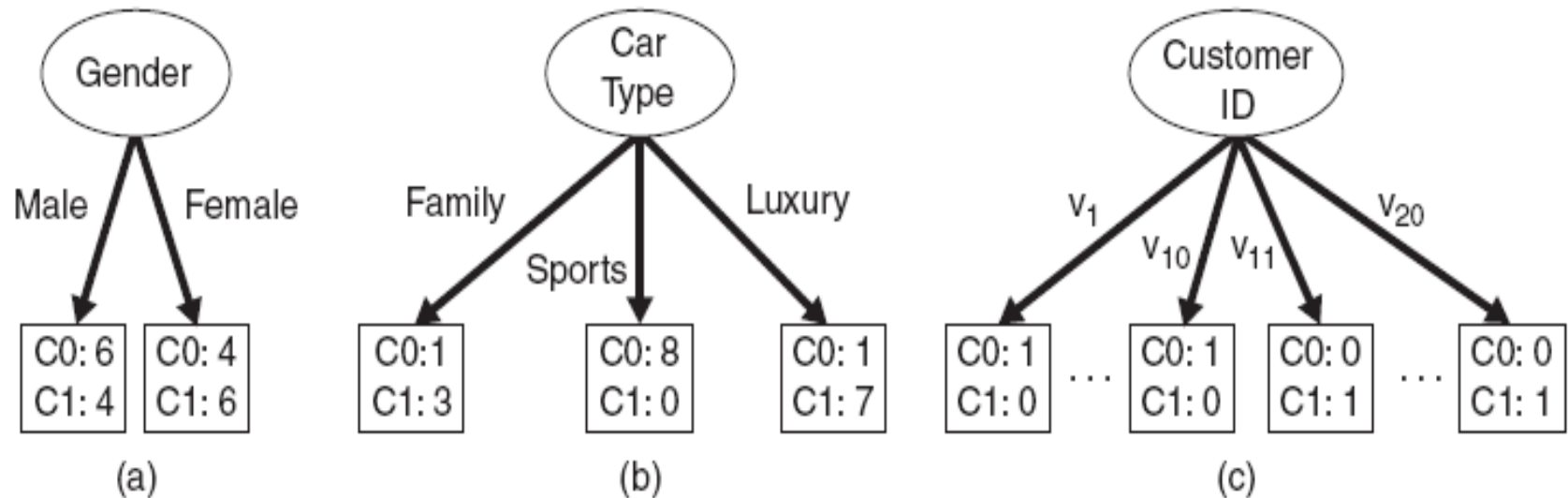


Figure 4.12. Multiway versus binary splits.

Splitting based on INFO

- Impurity measures favor attributes with large number of values
- A test condition with large number of outcomes may not be desirable
 - # of records in each partition is too small to make predictions

Splitting Based on INFO...

- Gain Ratio:

$$\mathit{GainRATIO}_{split} = \frac{\mathit{GAIN}_{split}}{\mathit{SplitINFO}} \quad \mathit{SplitINFO} = -\sum_{i=1}^k \frac{n_i}{n} \log \frac{n_i}{n}$$

Parent Node, p is split into k partitions

n_i is the number of records in partition i

- Adjusts Information Gain by the entropy of the partitioning (SplitINFO). Higher entropy partitioning (large number of small partitions) is penalized!
- Used in C4.5
- Designed to overcome the disadvantage of Information Gain

Splitting Criteria based on Classification Error

- Classification error at a node t :

$$Error(t) = 1 - \max_i P(i | t)$$

- Measures misclassification error made by a node.
 - Maximum $(1 - 1/n_c)$ when records are equally distributed among all classes, implying least interesting information
 - Minimum (0.0) when all records belong to one class, implying most interesting information

Examples for Computing Error

$$Error(t) = 1 - \max_i P(i | t)$$

C1	0
C2	6

$$P(C1) = 0/6 = 0 \quad P(C2) = 6/6 = 1$$

$$Error = 1 - \max(0, 1) = 1 - 1 = 0$$

C1	1
C2	5

$$P(C1) = 1/6 \quad P(C2) = 5/6$$

$$Error = 1 - \max(1/6, 5/6) = 1 - 5/6 = 1/6$$

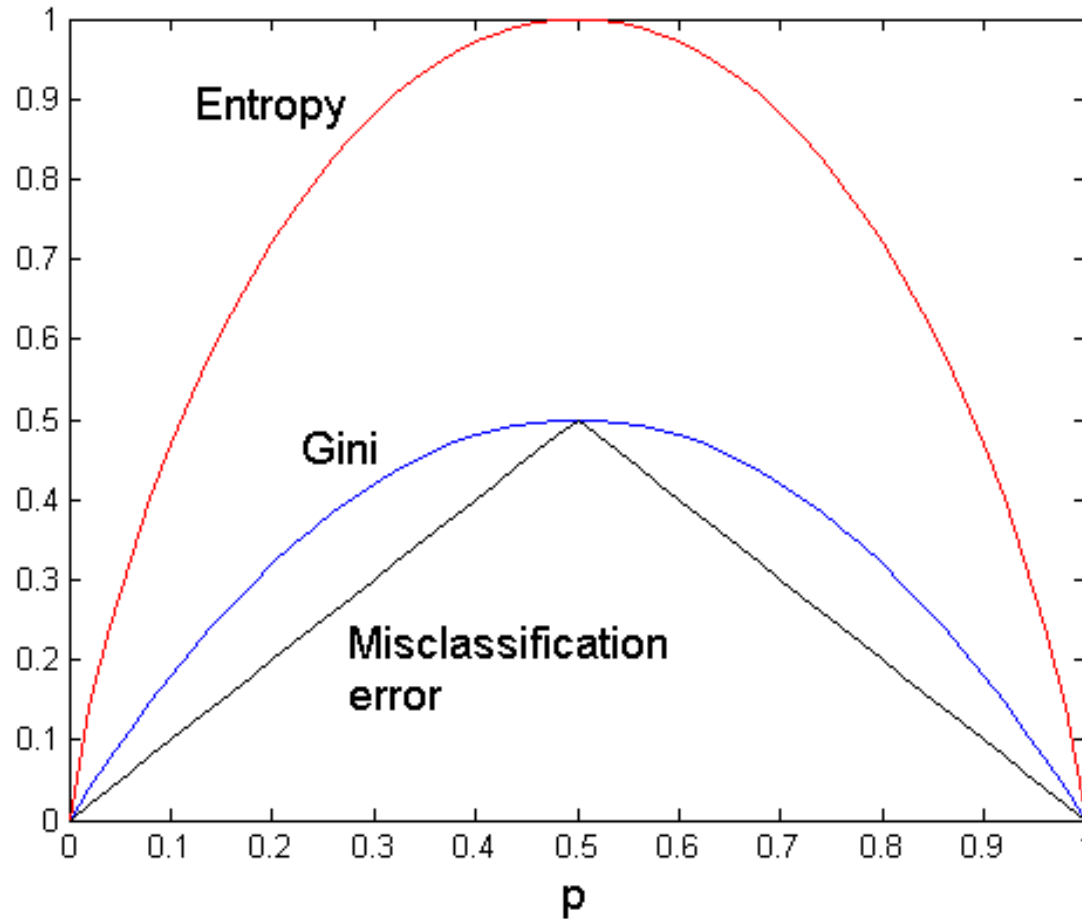
C1	2
C2	4

$$P(C1) = 2/6 \quad P(C2) = 4/6$$

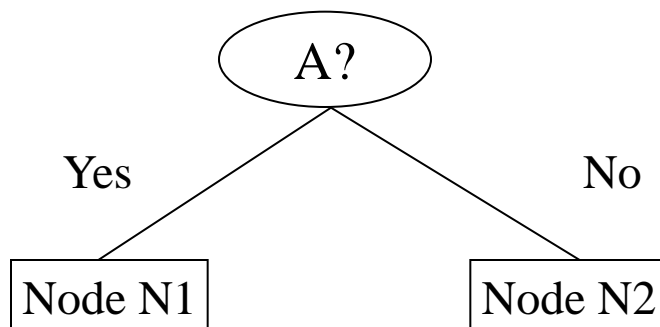
$$Error = 1 - \max(2/6, 4/6) = 1 - 4/6 = 1/3$$

Comparison among Splitting Criteria

For a 2-class problem:



Misclassification Error vs Gini



	Parent
C1	7
C2	3
Gini = 0.42	
Error = 0.3	

Gini(N1)

$$= 1 - (3/3)^2 - (0/3)^2 = 0$$

Error(N1)

$$= 1 - \max(0, 1) = 0$$

Gini(N2)

$$= 1 - (4/7)^2 - (3/7)^2 = 0.489$$

Error(N2)

$$= 1 - \max(3/7, 4/7) = 3/7$$

	N1	N2
C1	3	4
C2	0	3
Gini=0.342		
Error = 0.3		

Gini(Children)

$$= 3/10 * 0 + 7/10 * 0.489$$

$$= 0.342$$

Error(Children)

$$= 3/10 * 0 + 7/10 * 3/7 = 0.3$$

Gini improves !!

Tree Induction

- Greedy strategy.
 - Split the records based on an attribute test that optimizes certain criterion.
- Issues
 - Determine how to split the records
 - How to specify the attribute test condition?
 - How to determine the best split?
 - Determine when to stop splitting

Stopping Criteria for Tree Induction

- Stop expanding a node when all the records belong to the same class
- Stop expanding a node when all the records have similar attribute values
- Early termination (to be discussed later)

Decision Tree Based Classification

- Advantages:
 - Inexpensive to construct
 - Extremely fast at classifying unknown records
 - Easy to interpret for small-sized trees
 - Accuracy is comparable to other classification techniques for many simple data sets

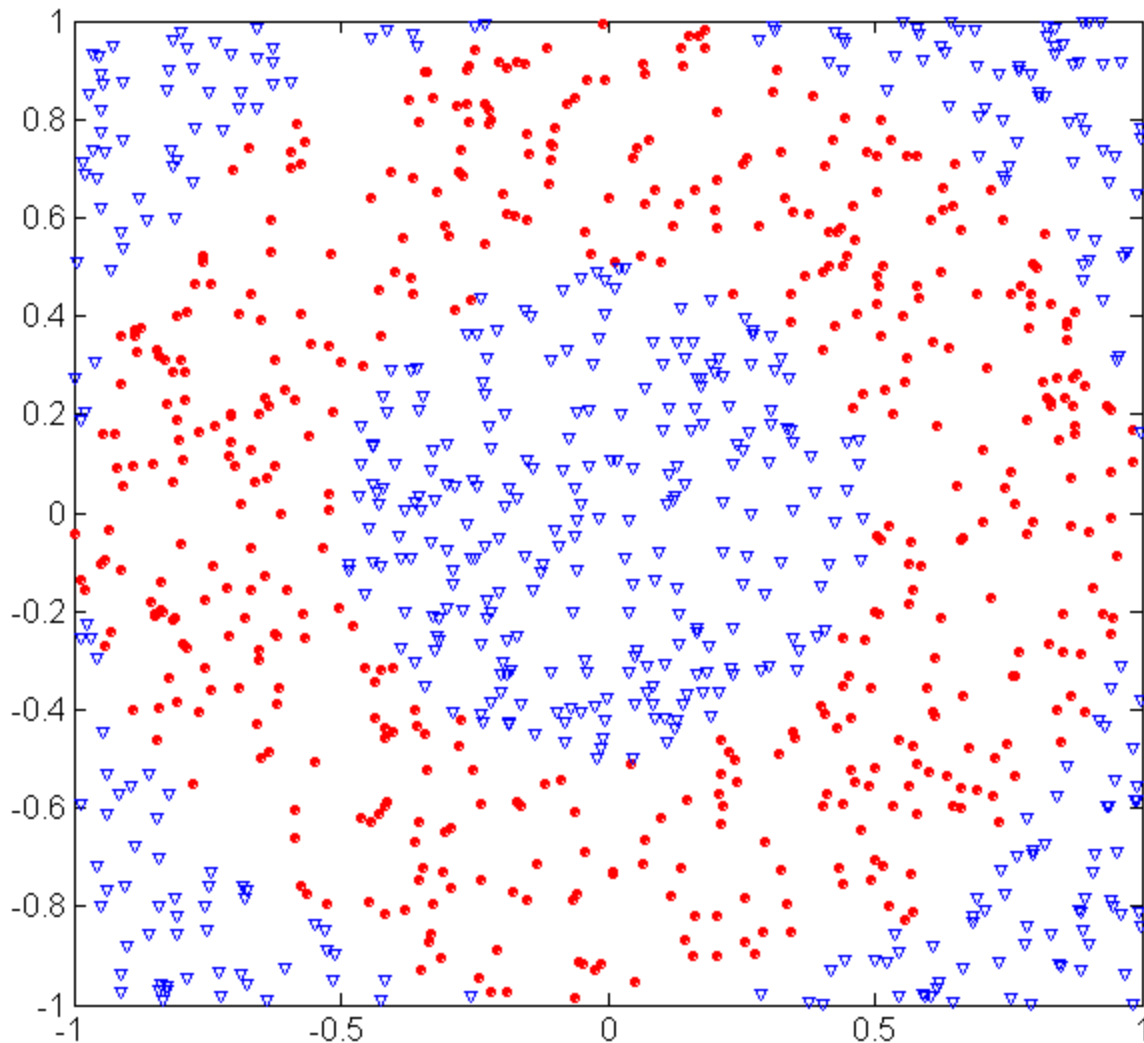
Example: C4.5

- Simple depth-first construction.
- Uses Information Gain
- Sorts Continuous Attributes at each node.
- Needs entire data to fit in memory.
- Unsuitable for Large Datasets.
 - Needs out-of-core sorting.
- You can download the software from:
<http://www.cse.unsw.edu.au/~quinlan/c4.5r8.tar.gz>

Practical Issues of Classification

- Underfitting and Overfitting
- Missing Values
- Costs of Classification

Underfitting and Overfitting (Example)



500 circular and 500
triangular data points.

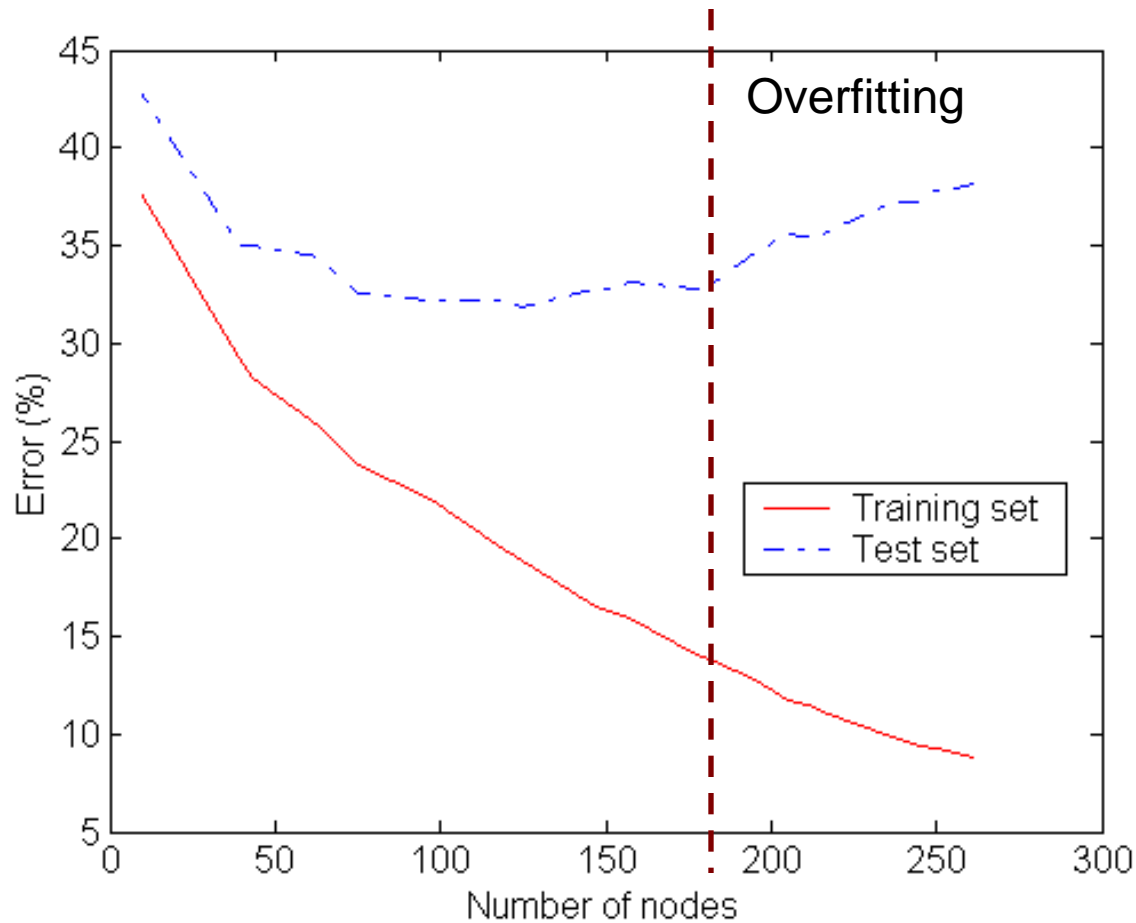
Circular points:

$$0.5 \leq \text{sqrt}(x_1^2+x_2^2) \leq 1$$

Triangular points:

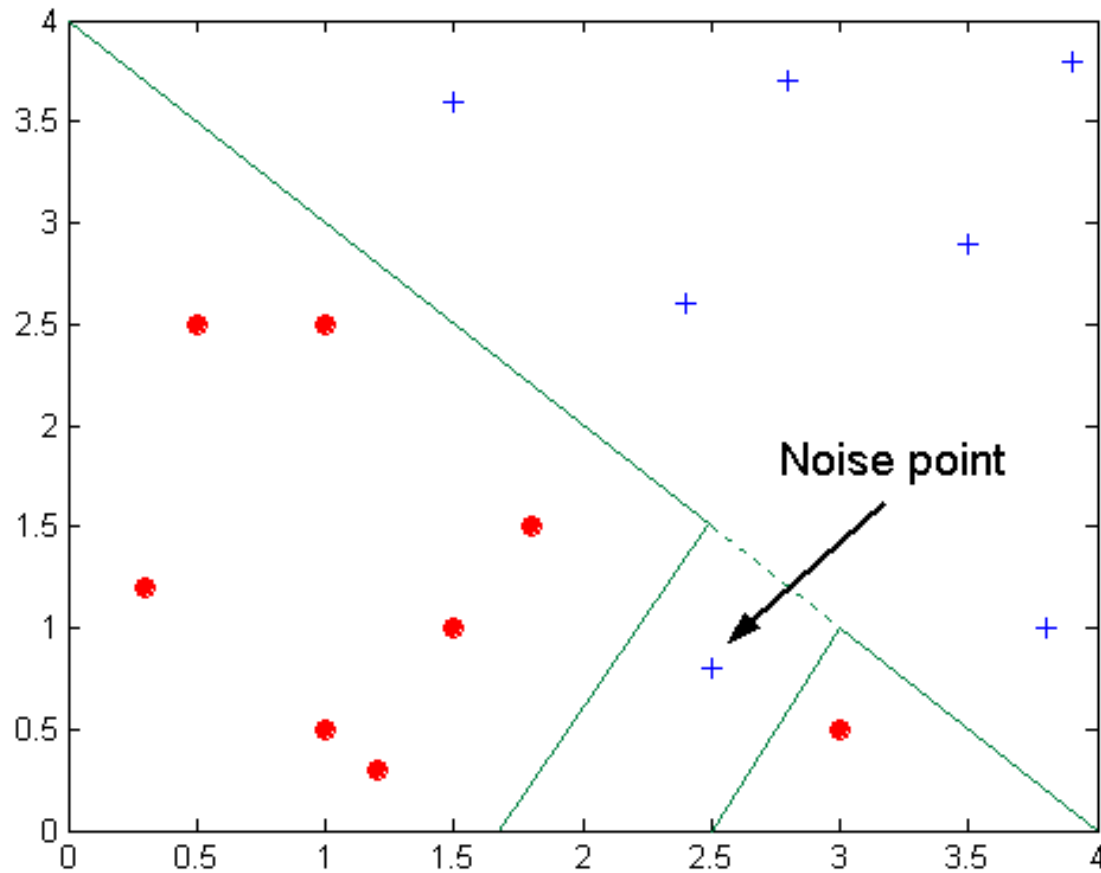
$$\text{sqrt}(x_1^2+x_2^2) > 0.5 \text{ or} \\ \text{sqrt}(x_1^2+x_2^2) < 1$$

Underfitting and Overfitting



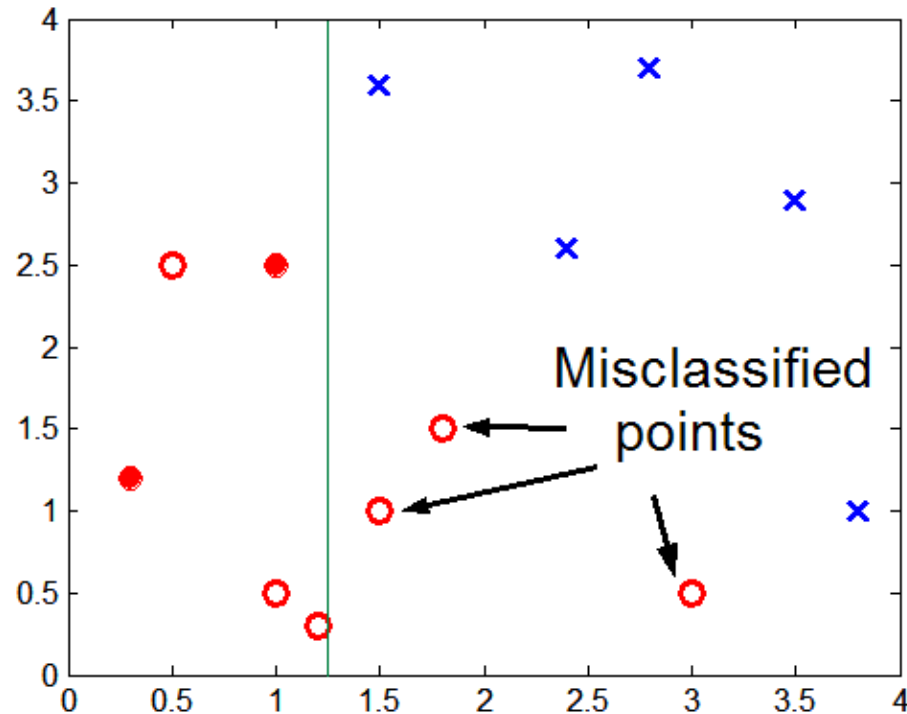
Underfitting: when model is too simple, both training and test errors are large

Overfitting due to Noise



Decision boundary is distorted by noise point

Overfitting due to Insufficient Examples



Lack of data points in the lower half of the diagram makes it difficult to predict correctly the class labels of that region

- Insufficient number of training records in the region causes the decision tree to predict the test examples using other training records that are irrelevant to the classification task

Notes on Overfitting

- Overfitting results in decision trees that are more complex than necessary
- Training error no longer provides a good estimate of how well the tree will perform on previously unseen records
 - The model does not **generalize** well
- Need new ways for estimating errors

Estimating Generalization Errors

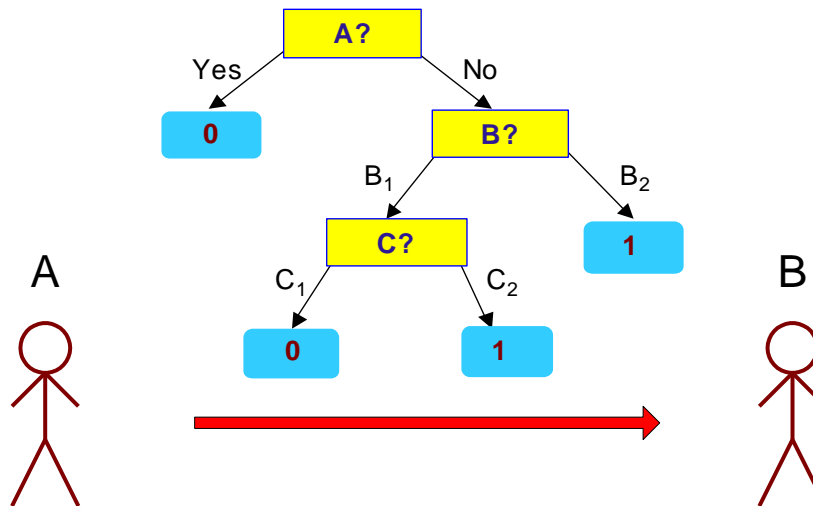
- **Re-substitution errors:** error on training ($\sum e(t)$)
- **Generalization errors:** error on testing ($\sum e'(t)$)
- Methods for estimating generalization errors:
 - **Optimistic approach:** $e'(t) = e(t)$
 - **Pessimistic approach:**
 - For each leaf node: $e'(t) = (e(t)+0.5)$
 - Total errors: $e'(T) = e(T) + N \times 0.5$ (N: number of leaf nodes)
 - For a tree with 30 leaf nodes and 10 errors on training (out of 1000 instances):
 - Training error = $10/1000 = 1\%$
 - Generalization error = $(10 + 30 \times 0.5)/1000 = 2.5\%$
 - **Reduced error pruning (REP):**
 - uses **validation dataset** to estimate generalization error

Occam's Razor

- Given two models of similar generalization errors, one should prefer the simpler model over the more complex model
- For complex models, there is a greater chance that it was fitted accidentally by errors in data
- Therefore, one should include model complexity when evaluating a model

Minimum Description Length (MDL)

X	y
X ₁	1
X ₂	0
X ₃	0
X ₄	1
...	...
X _n	1



X	y
X ₁	?
X ₂	?
X ₃	?
X ₄	?
...	...
X _n	?

- **Cost(Model,Data) = Cost(Data|Model) + Cost(Model)**
 - Cost is the number of bits needed for encoding.
 - Search for the least costly model.
- Cost(Data|Model) encodes the misclassification errors.
- Cost(Model) uses node encoding (number of children) plus splitting condition encoding.

How to Address Overfitting

- **Pre-Pruning (Early Stopping Rule)**
 - Stop the algorithm before it becomes a fully-grown tree
 - Typical stopping conditions for a node:
 - Stop if all instances belong to the same class
 - Stop if all the attribute values are the same
 - More restrictive conditions:
 - Stop if number of instances is less than some user-specified threshold
 - Stop if class distribution of instances are independent of the available features (e.g., using χ^2 test)
 - Stop if expanding the current node does not improve impurity measures (e.g., Gini or information gain).

How to Address Overfitting...

- **Post-pruning**
 - Grow decision tree to its entirety
 - Trim the nodes of the decision tree in a bottom-up fashion
 - If generalization error improves after trimming, replace sub-tree by a leaf node.
 - Class label of leaf node is determined from majority class of instances in the sub-tree
 - Can use MDL for post-pruning

Example of Post-Pruning

Class = Yes	20
Class = No	10
Error = 10/30	

Training Error (Before splitting) = 10/30

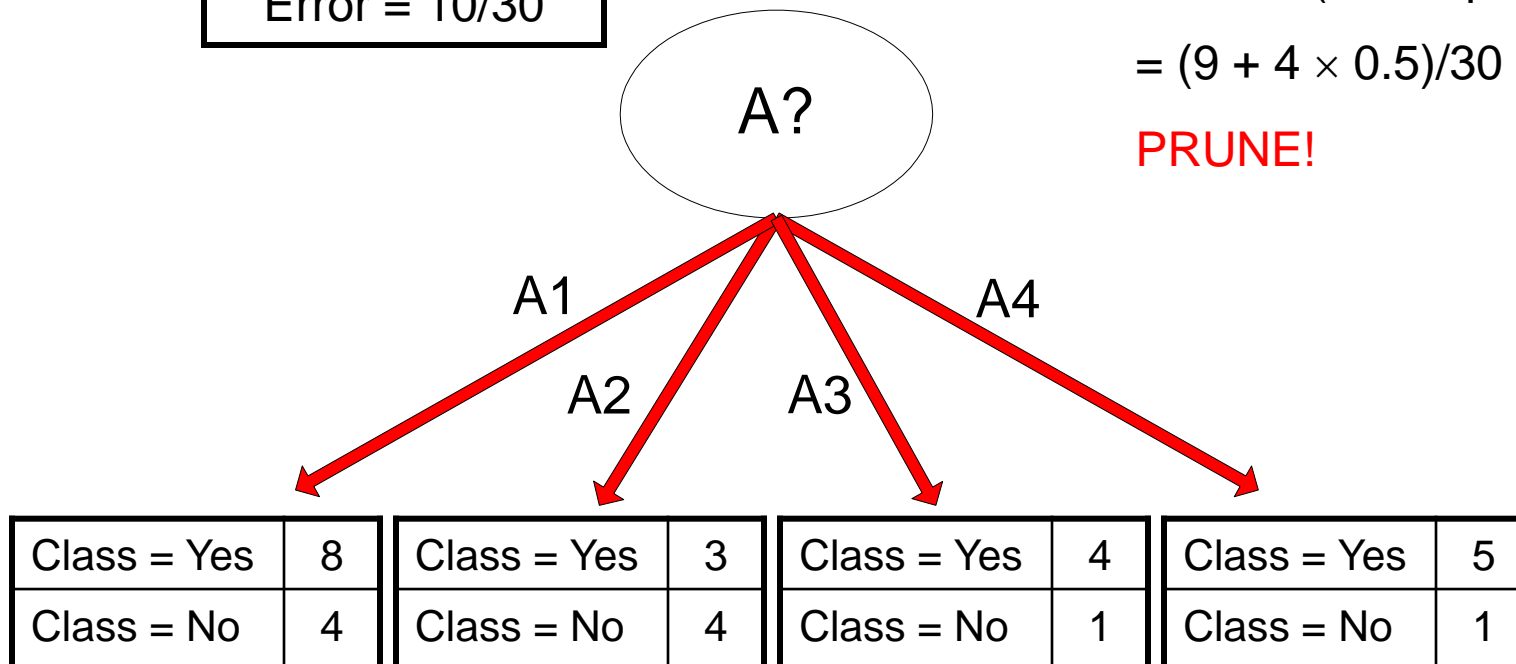
Pessimistic error = $(10 + 0.5)/30 = 10.5/30$

Training Error (After splitting) = 9/30

Pessimistic error (After splitting)

= $(9 + 4 \times 0.5)/30 = 11/30$

PRUNE!



Handling Missing Attribute Values

- Missing values affect decision tree construction in three different ways:
 - Affects how impurity measures are computed
 - Affects how to distribute instance with missing value to child nodes
 - Affects how a test instance with missing value is classified

Computing Impurity Measure

<i>Tid</i>	Refund	Marital Status	Taxable Income	Class
1	Yes	Single	125K	No
2	No	Married	100K	No
3	No	Single	70K	No
4	Yes	Married	120K	No
5	No	Divorced	95K	Yes
6	No	Married	60K	No
7	Yes	Divorced	220K	No
8	No	Single	85K	Yes
9	No	Married	75K	No
10	?	Single	90K	Yes

Missing value

Before Splitting:

$$\text{Entropy}(\text{Parent}) = -0.3 \log(0.3) - (0.7) \log(0.7) = 0.8813$$

	Class = Yes	Class = No
Refund=Yes	0	3
Refund=No	2	4
Refund=?	1	0

Split on Refund:

$$\text{Entropy}(\text{Refund=Yes}) = 0$$

$$\begin{aligned} \text{Entropy}(\text{Refund=No}) \\ = -(2/6) \log(2/6) - (4/6) \log(4/6) = 0.9183 \end{aligned}$$

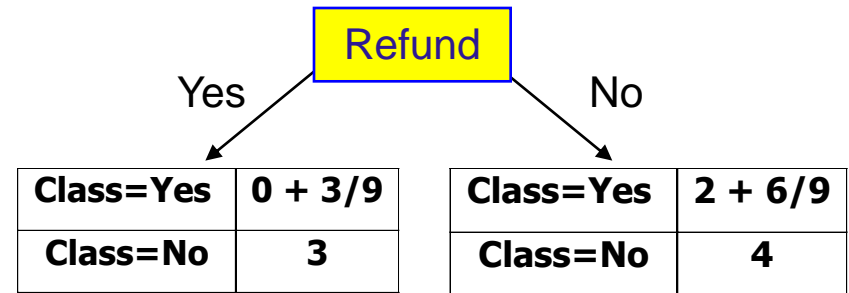
$$\begin{aligned} \text{Entropy}(\text{Children}) \\ = 0.3 (0) + 0.6 (0.9183) = 0.551 \end{aligned}$$

$$\text{Gain} = 0.9 \times (0.8813 - 0.551) = 0.3303$$

Distribute Instances

<i>Tid</i>	Refund	Marital Status	Taxable Income	Class
1	Yes	Single	125K	No
2	No	Married	100K	No
3	No	Single	70K	No
4	Yes	Married	120K	No
5	No	Divorced	95K	Yes
6	No	Married	60K	No
7	Yes	Divorced	220K	No
8	No	Single	85K	Yes
9	No	Married	75K	No

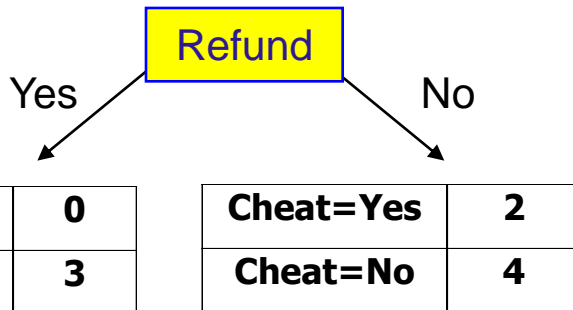
<i>Tid</i>	Refund	Marital Status	Taxable Income	Class
10	?	Single	90K	Yes



Probability that Refund=Yes is 3/9

Probability that Refund=No is 6/9

Assign record to the left child with weight = 3/9 and to the right child with weight = 6/9

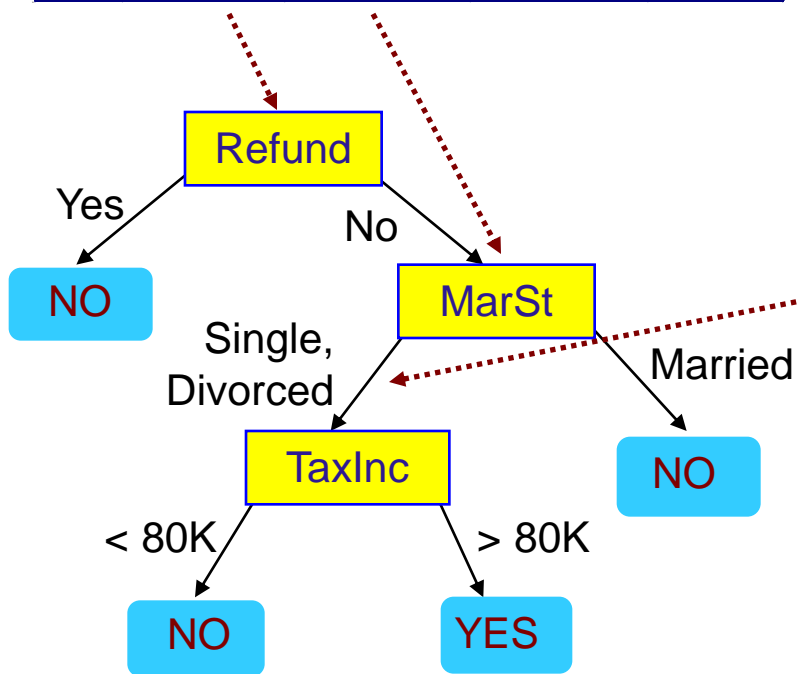


Classify Instances

New record:

Tid	Refund	Marital Status	Taxable Income	Class
11	No	?	85K	?

	Married	Single	Divorced	Total
Class=No	3	1	0	4
Class=Yes	6/9	1	1	2.67
Total	3.67	2	1	6.67



Probability that Marital Status = Married is $3.67/6.67$

Probability that Marital Status = {Single, Divorced} is $3/6.67$

Other Issues

- Data Fragmentation
- Search Strategy
- Expressiveness
- Tree Replication

Data Fragmentation

- Number of instances gets smaller as you traverse down the tree
- Number of instances at the leaf nodes could be too small to make any statistically significant decision

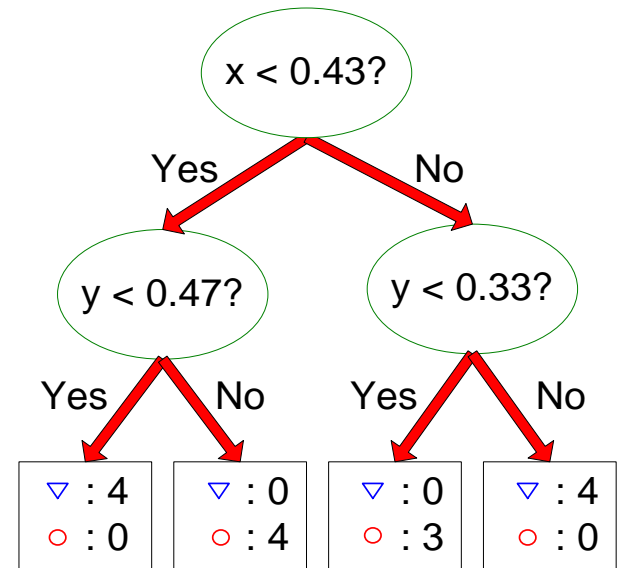
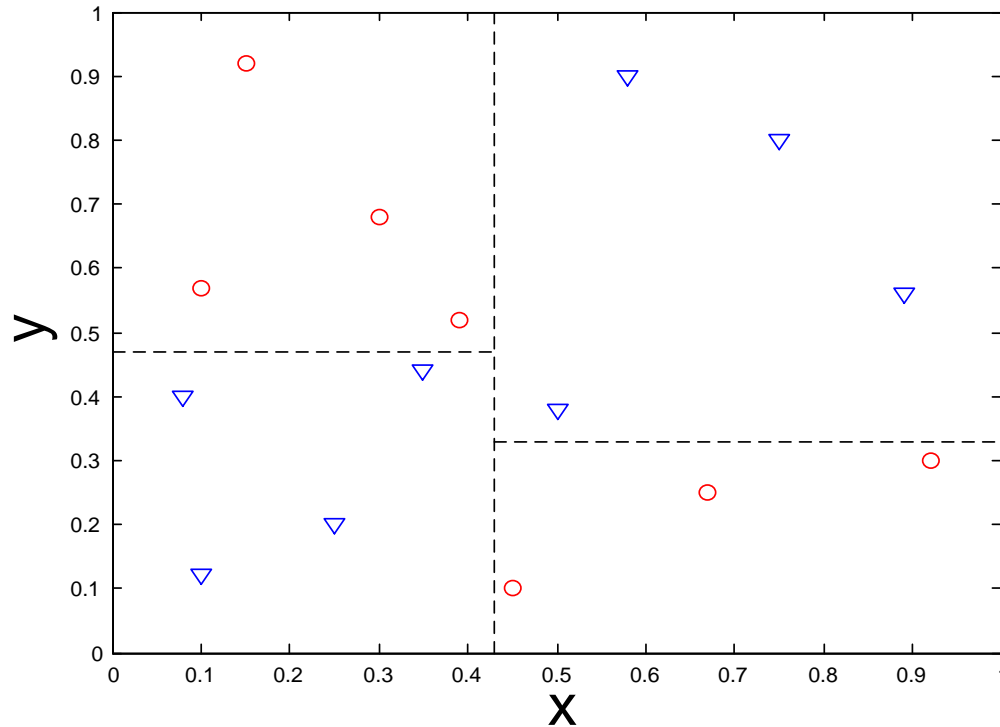
Search Strategy

- Finding an optimal decision tree is NP-hard
- The algorithm presented so far uses a greedy, top-down, recursive partitioning strategy to induce a reasonable solution
- Other strategies?
 - Bottom-up
 - Bi-directional

Expressiveness

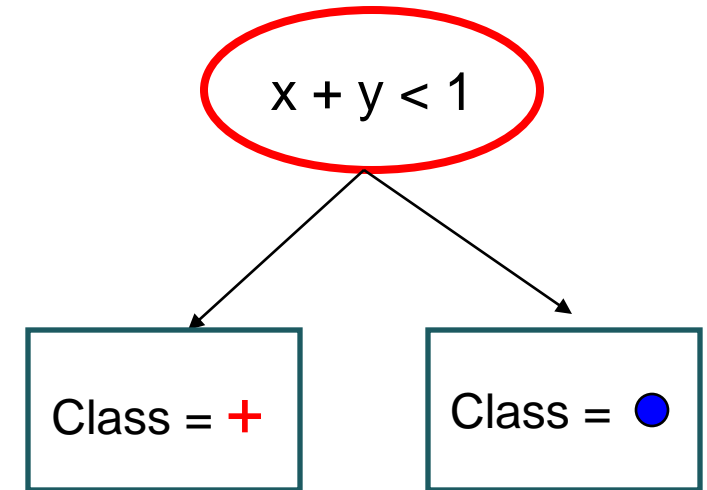
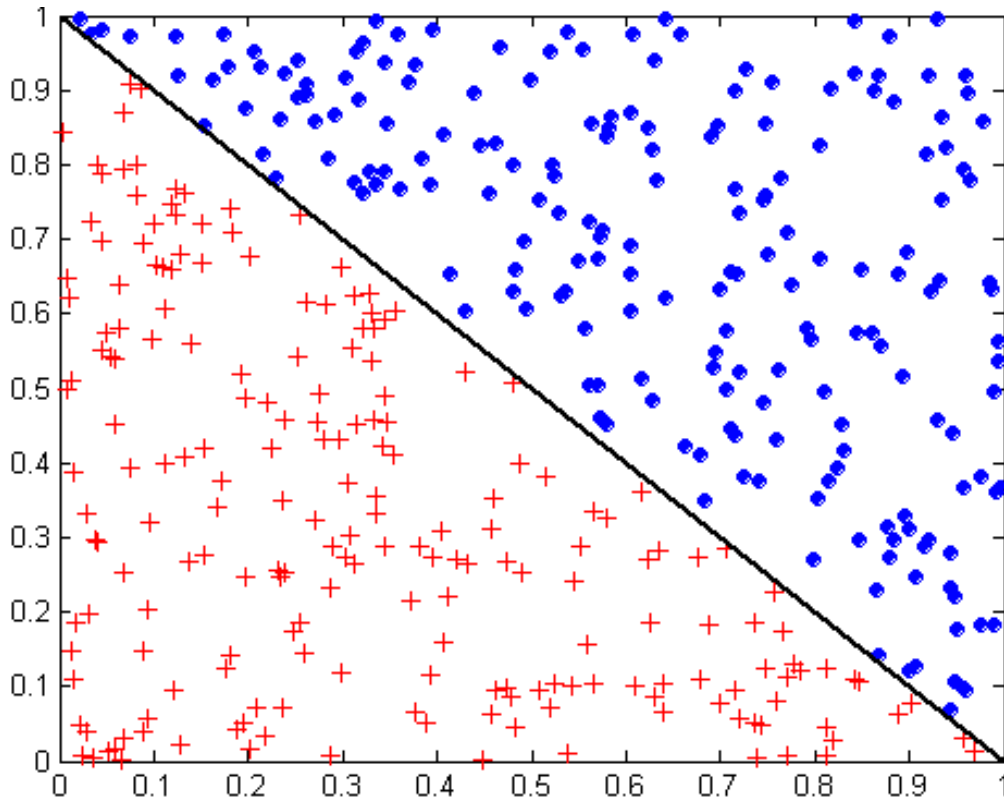
- Decision tree provides expressive representation for learning discrete-valued function
 - But they do not generalize well to certain types of Boolean functions
 - Example: parity function:
 - Class = 1 if there is an even number of Boolean attributes with truth value = True
 - Class = 0 if there is an odd number of Boolean attributes with truth value = True
 - For accurate modeling, must have a complete tree
- Not expressive enough for modeling continuous variables
 - Particularly when test condition involves only a single attribute at-a-time

Decision Boundary



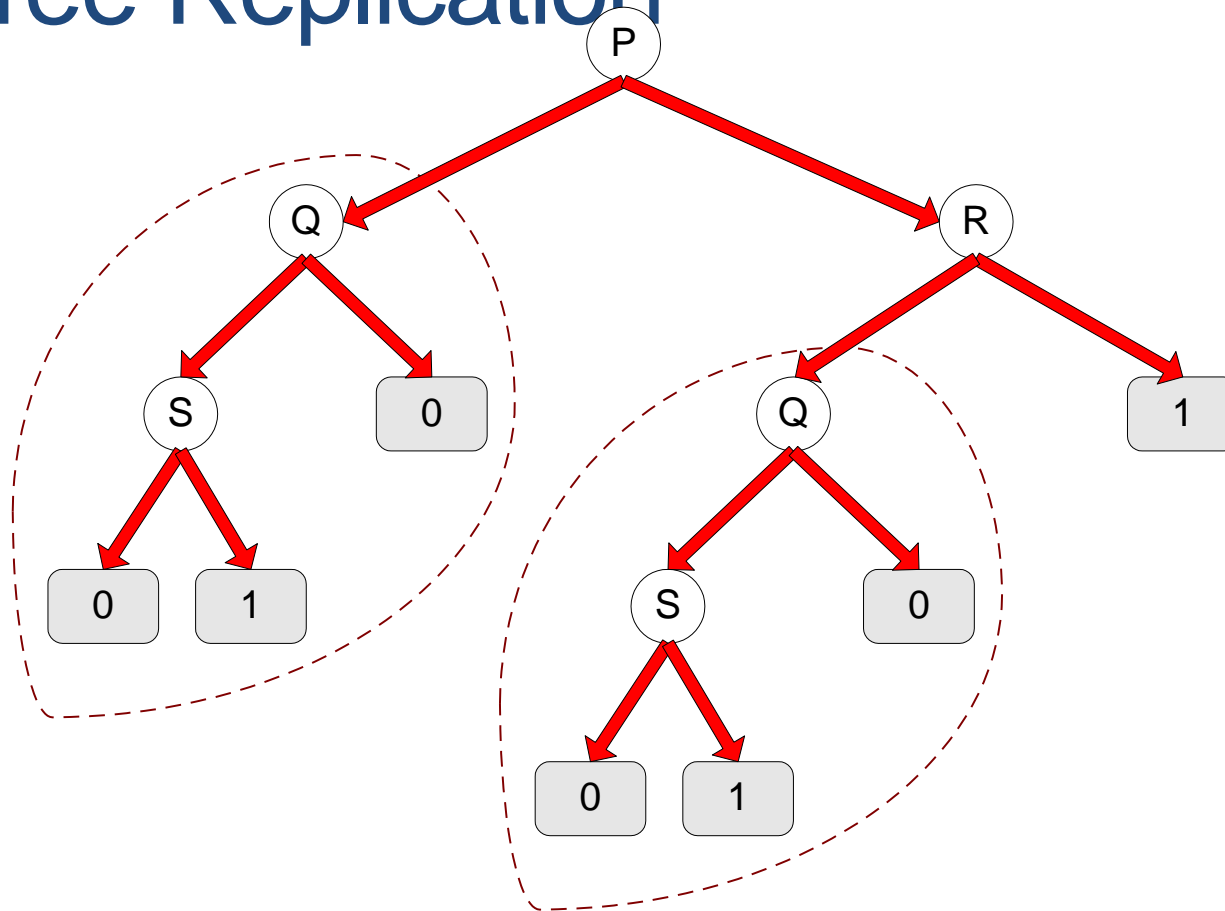
- Border line between two neighboring regions of different classes is known as decision boundary
- Decision boundary is parallel to axes because test condition involves a single attribute at-a-time

Oblique Decision Trees



- Test condition may involve multiple attributes
- More expressive representation
- Finding optimal test condition is computationally expensive

Tree Replication



- Same subtree appears in multiple branches