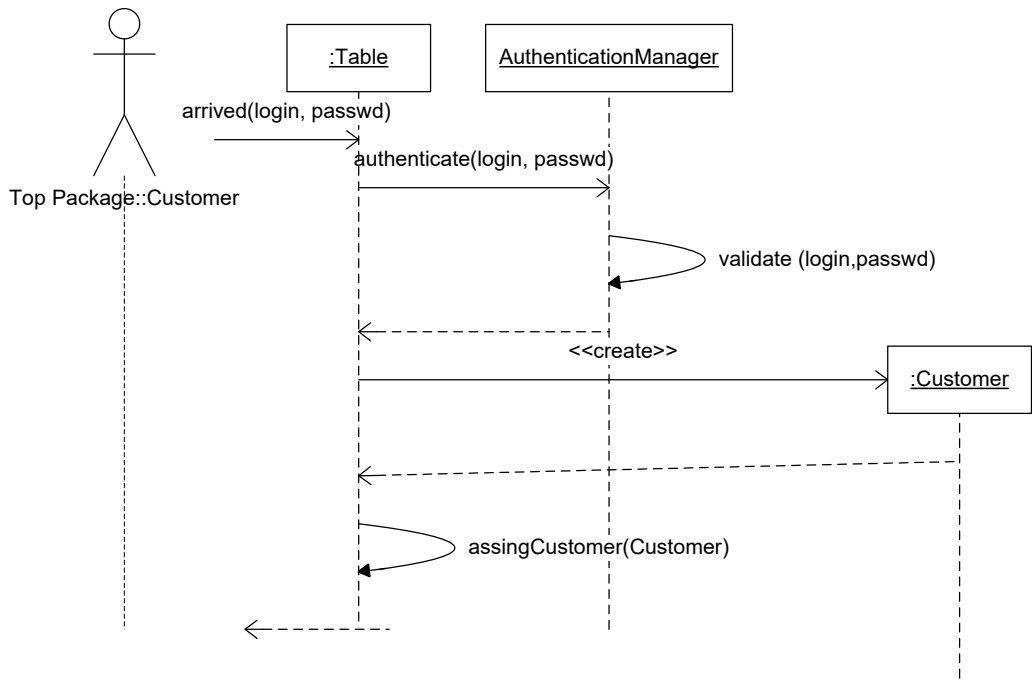


Coarse grained analysis model, reflecting the basic entities of the requirements

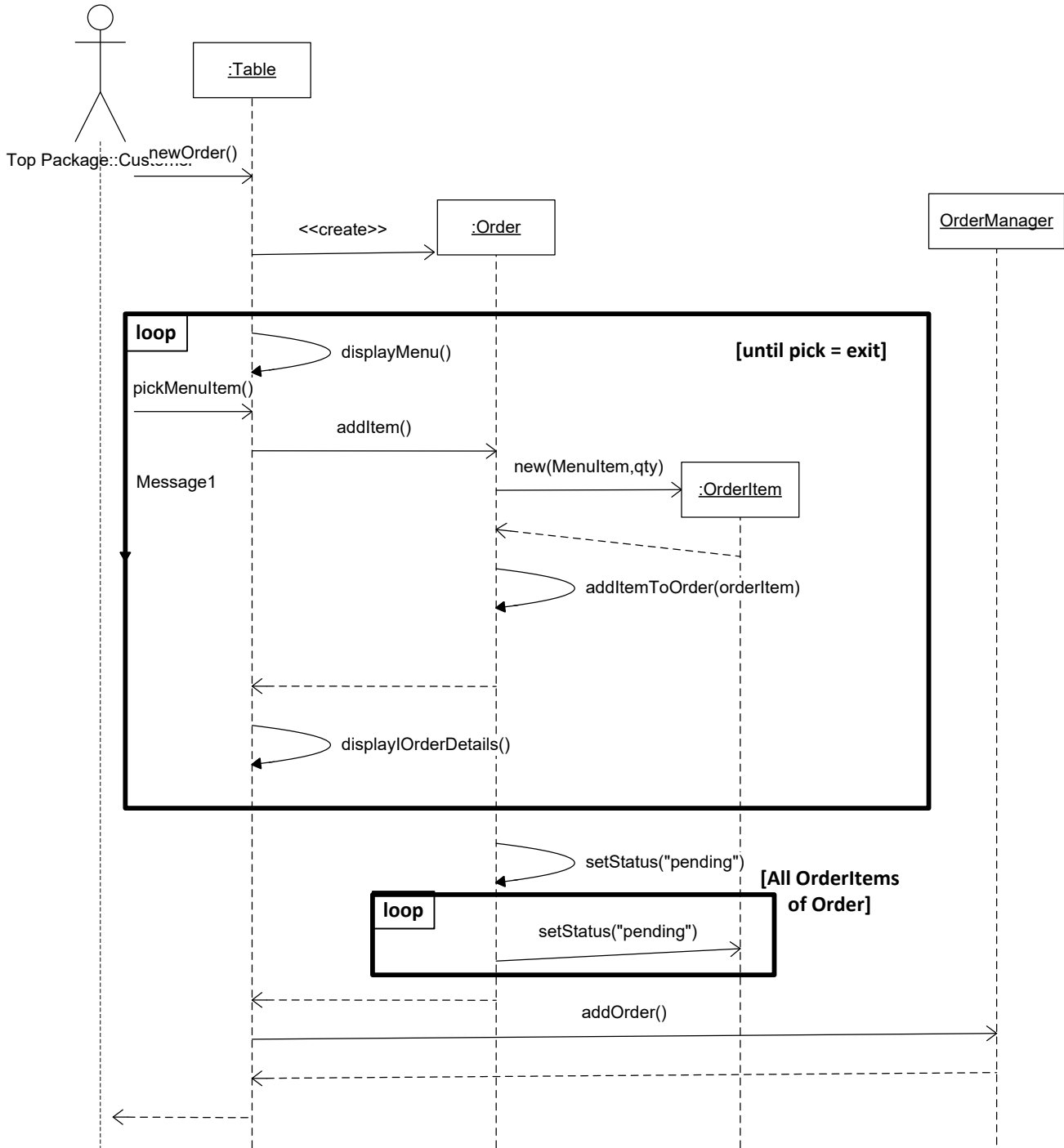
MUST revisit!

S_Authenticate Customer

Nobody really uses the activation rectangle...
It's OK to skip



S_PlaceAnOrder

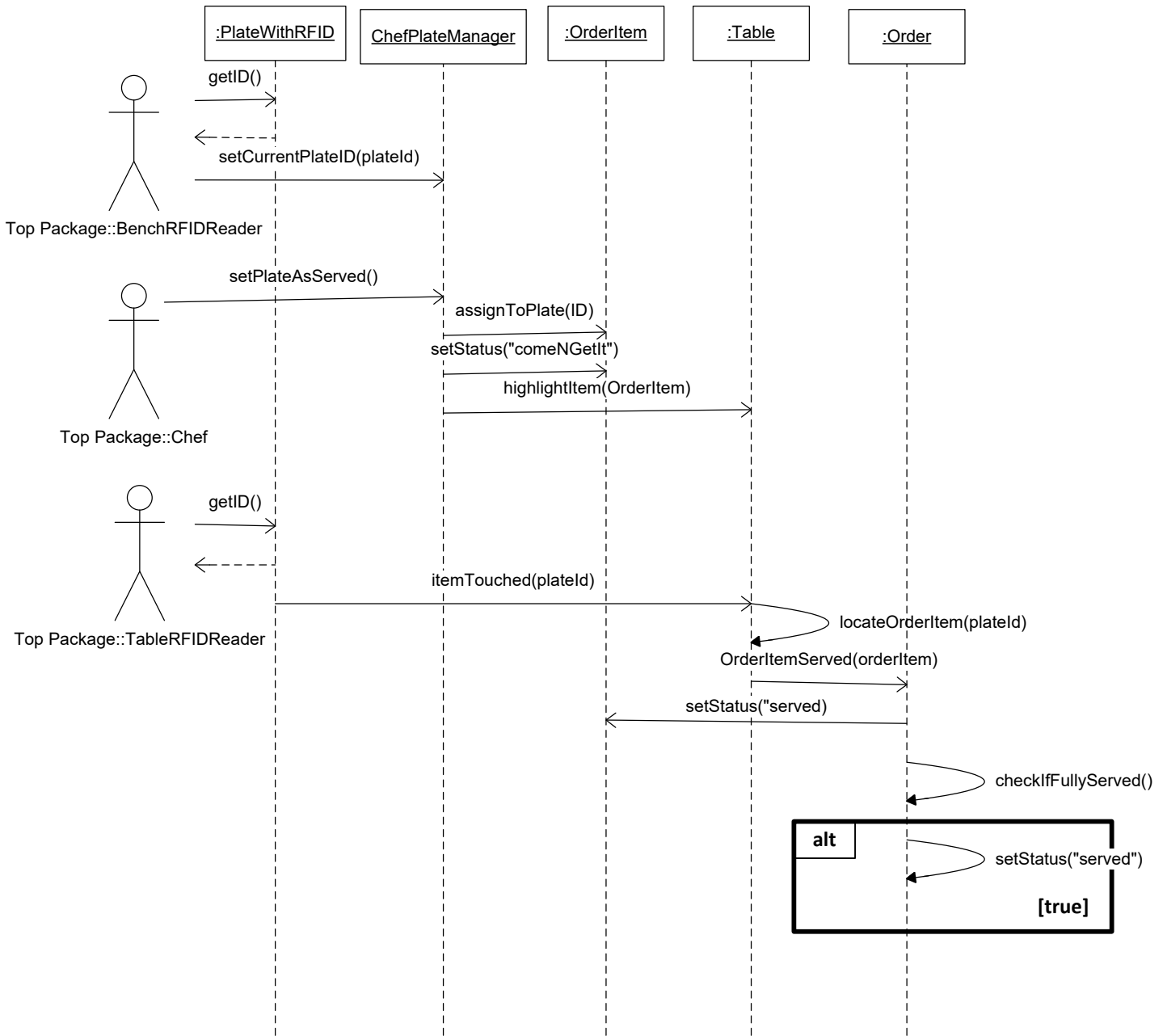


What's wrong with this sequence?

Is it the job of the Table to "create" Orders and to add them to the OrderManager?

... the Manager who should really be the center of this, learns the news last...

S_DeliverPlate



Too complex (in sharp contrast to the simplicity of the use case).
 Can we simplify it?
 (not necessarily, too often things are inherently complicated)
 MUST revisit however...

S_Checkout

Too many alternatives to handle

